



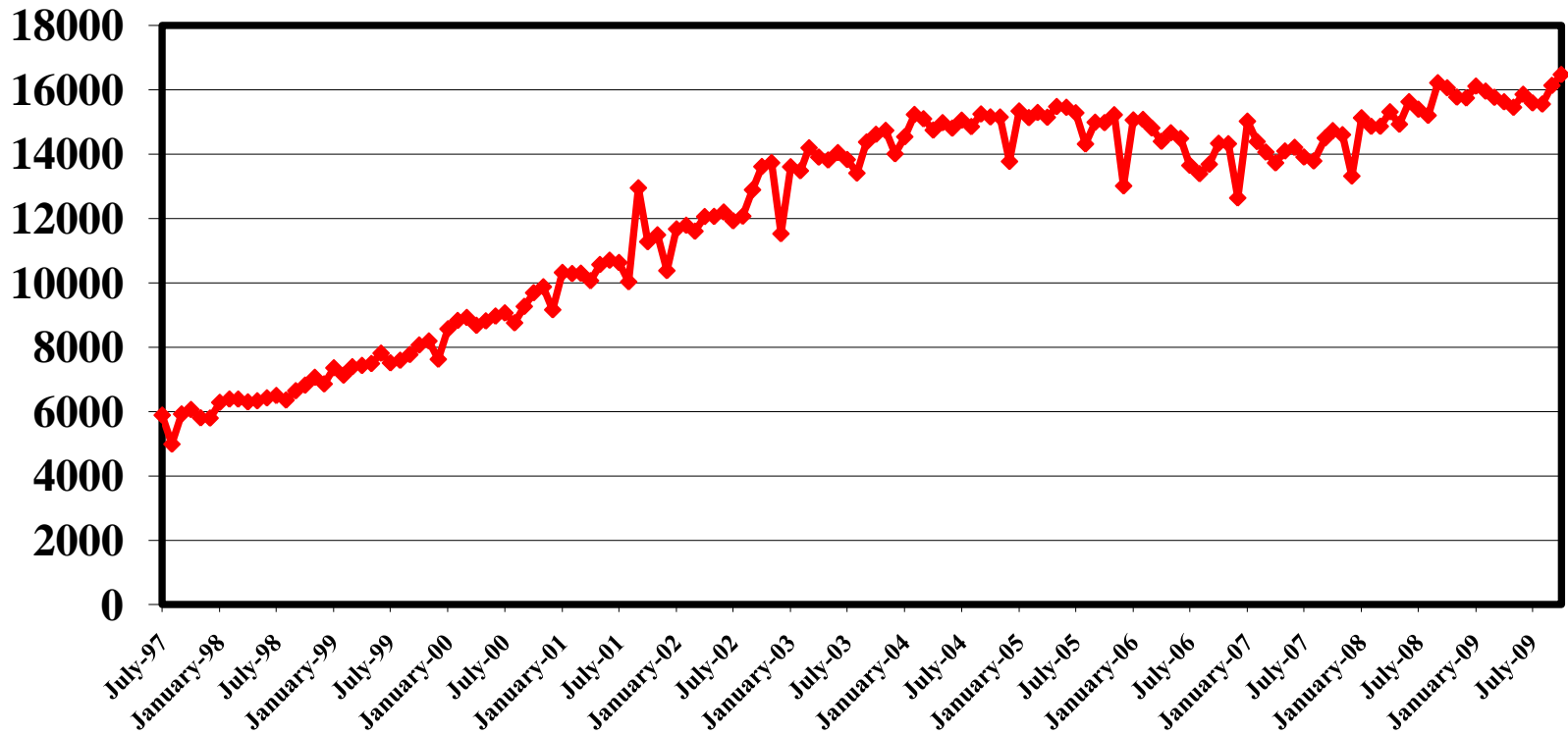
# VRE Performance Measures

Last Updated November 20, 2009

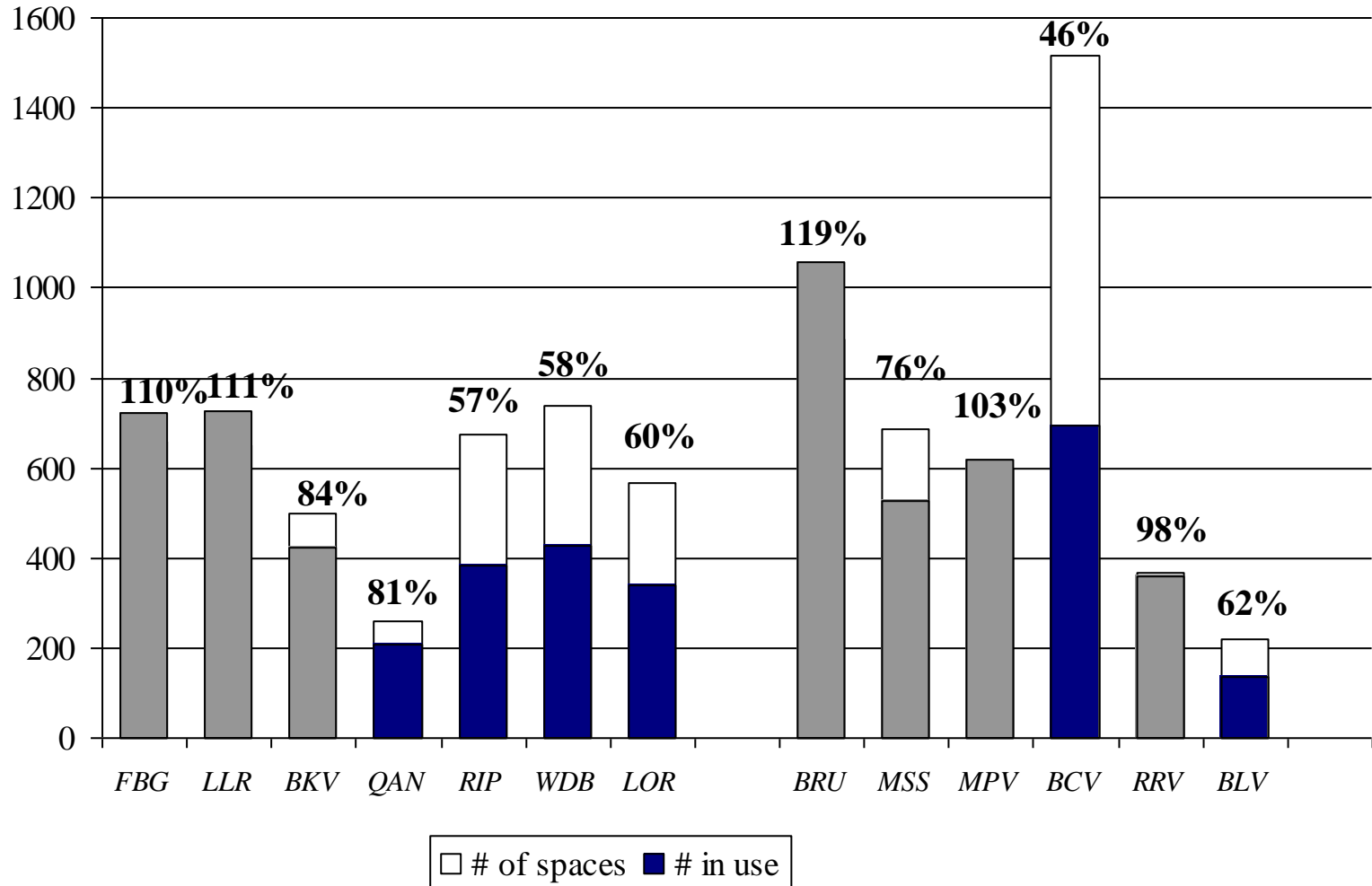
With statistics through  
October 30, 2009

# VRE Ridership

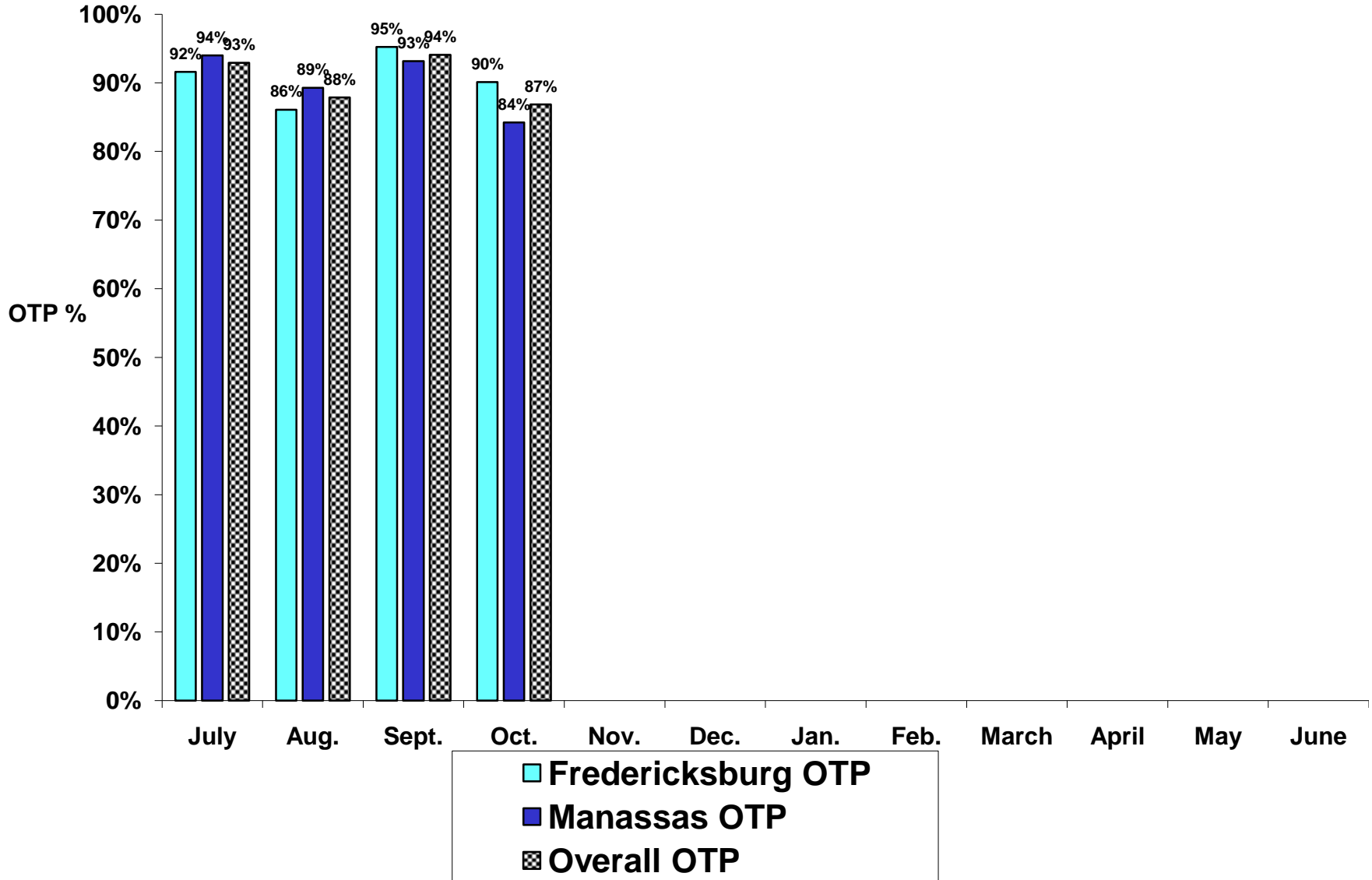
*(July 1997 – October 2009)*



# Parking Lot Utilization: October 2009

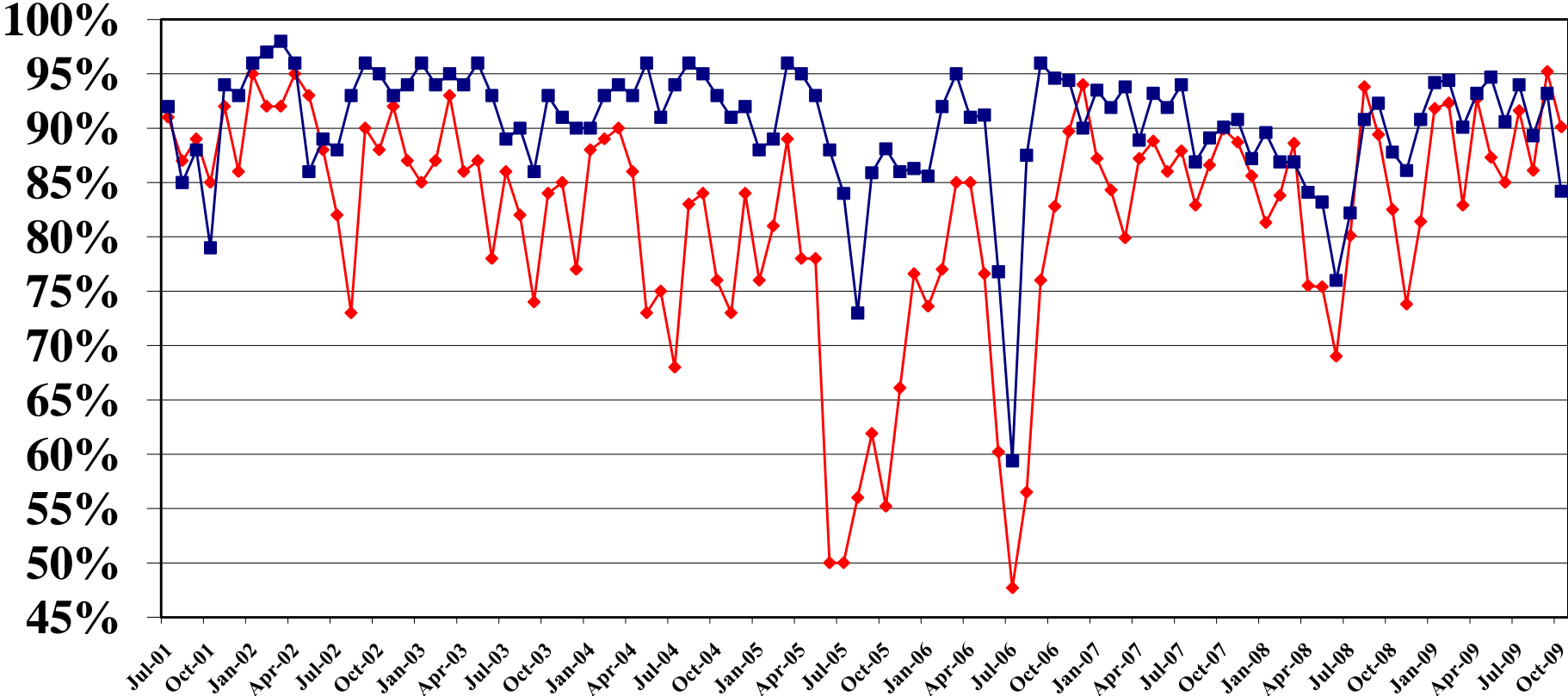


# Average On-Time Performance FY-2010



# On-Time Performance

July 2001 – October 2009



◆ Fredericksburg Line    ■ Manassas Line

# Ridership Growth

Current Month	MANASSAS			FREDERICKSBURG			Current Total	% change
	Cumulative FY2009	Cumulative FY2010	% change	Cumulative FY2009	Cumulative FY2010	% change		
July	154,066	163,100	5.9%	184,525	179,830	-2.5%	342,930	1.3%
August	298,659	317,944	6.5%	359,154	351,580	-2.1%	669,524	1.8%
September	456,054	479,425	5.1%	542,275	528,890	-2.5%	1,008,315	1.0%
October	620,865	646,968	4.2%	730,116	707,230	-3.1%	1,354,198	0.2%
November	746,905			875,201				
December	883,468			1,035,994				
January	1,021,679			1,192,914				
February	1,165,667			1,352,042				
March	1,328,811			1,527,273				
April	1,492,195			1,707,585				
May	1,640,938			1,867,882				
June	1,808,366			2,049,280				

\*Ridership figures are shown in passenger trips. Includes Amtrak cross honor train riders.

# Manassas Line Capacity

Train #	# of seats	Daily Average	% use	Mid Week	% use	Peak %
322	789	417	53%	436	55%	2%
321	789	5	1%	5	1%	0%
332	789	537	68%	546	69%	1%
333	789	656	83%	709	90%	7%
324	795	687	86%	731	92%	6%
335	795	419	53%	463	58%	6%
326	798	727	91%	762	95%	4%
325	798	169	21%	144	18%	-3%
336	798	11	1%	11	1%	0%
329	798	919	115%	975	122%	7%
328	1119	841	75%	881	79%	4%
331	1119	919	82%	993	89%	7%
330	873	715	82%	749	86%	4%
327	873	770	88%	762	87%	-1%
338	873	6	1%	5	1%	0%
337	873	179	21%	208	24%	3%

# Fredericksburg Line Capacity

Train #	# of seats	Daily Average	% use	Mid Week	% use	Peak %
300	1119	921	82%	963	86%	4%
307	1119	961	86%	1023	91%	6%
302	786	789	100%	831	106%	5%
305	786	659	84%	693	88%	4%
304	873	675	77%	701	80%	3%
301	873	162	19%	136	16%	-3%
309	873	812	93%	850	97%	4%
306	786	735	94%	780	99%	6%
303	786	827	105%	777	99%	-6%
308	723	541	75%	544	75%	0%
311	723	591	82%	654	90%	9%
310	531	439	83%	464	87%	5%
313	531	282	53%	300	56%	3%