



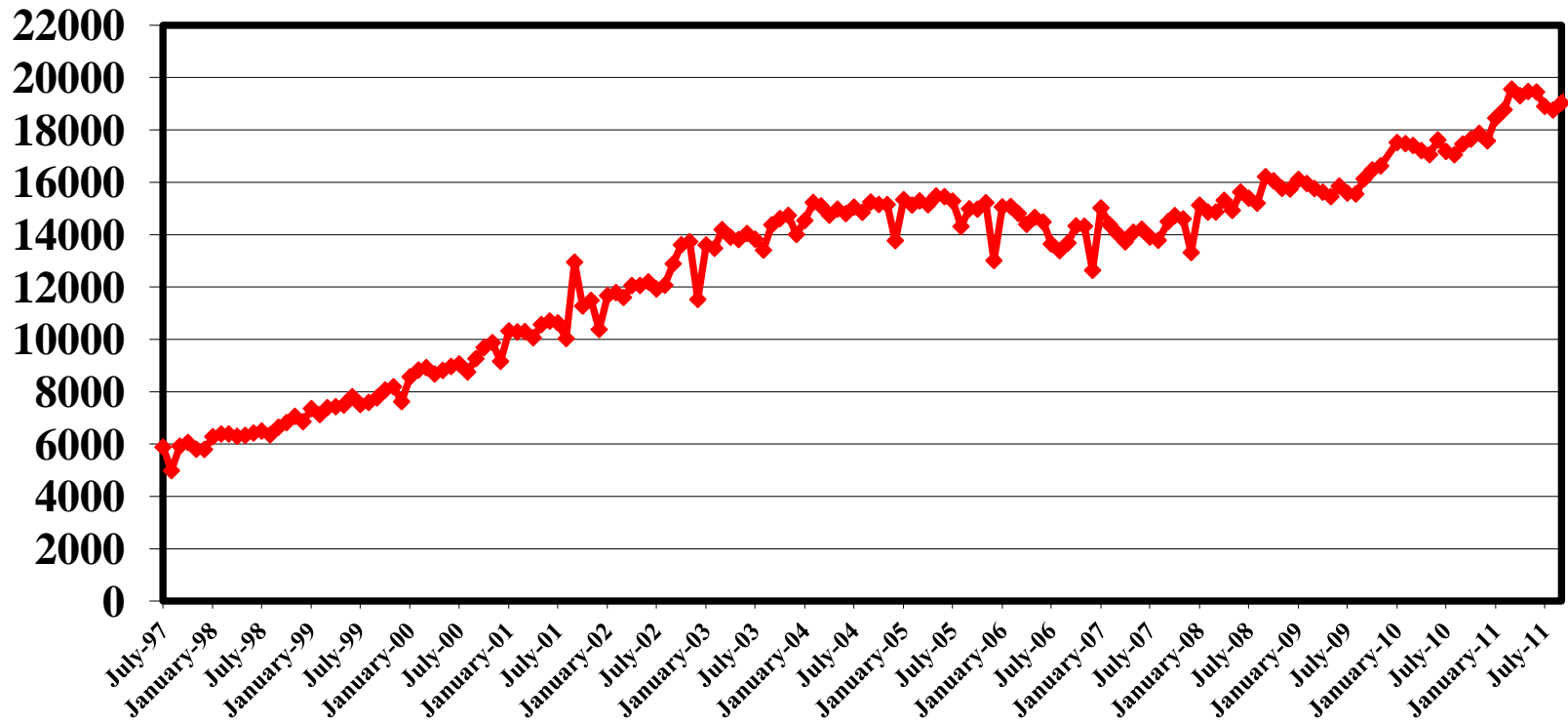
VRE Performance Measures

Last Updated November 18, 2011

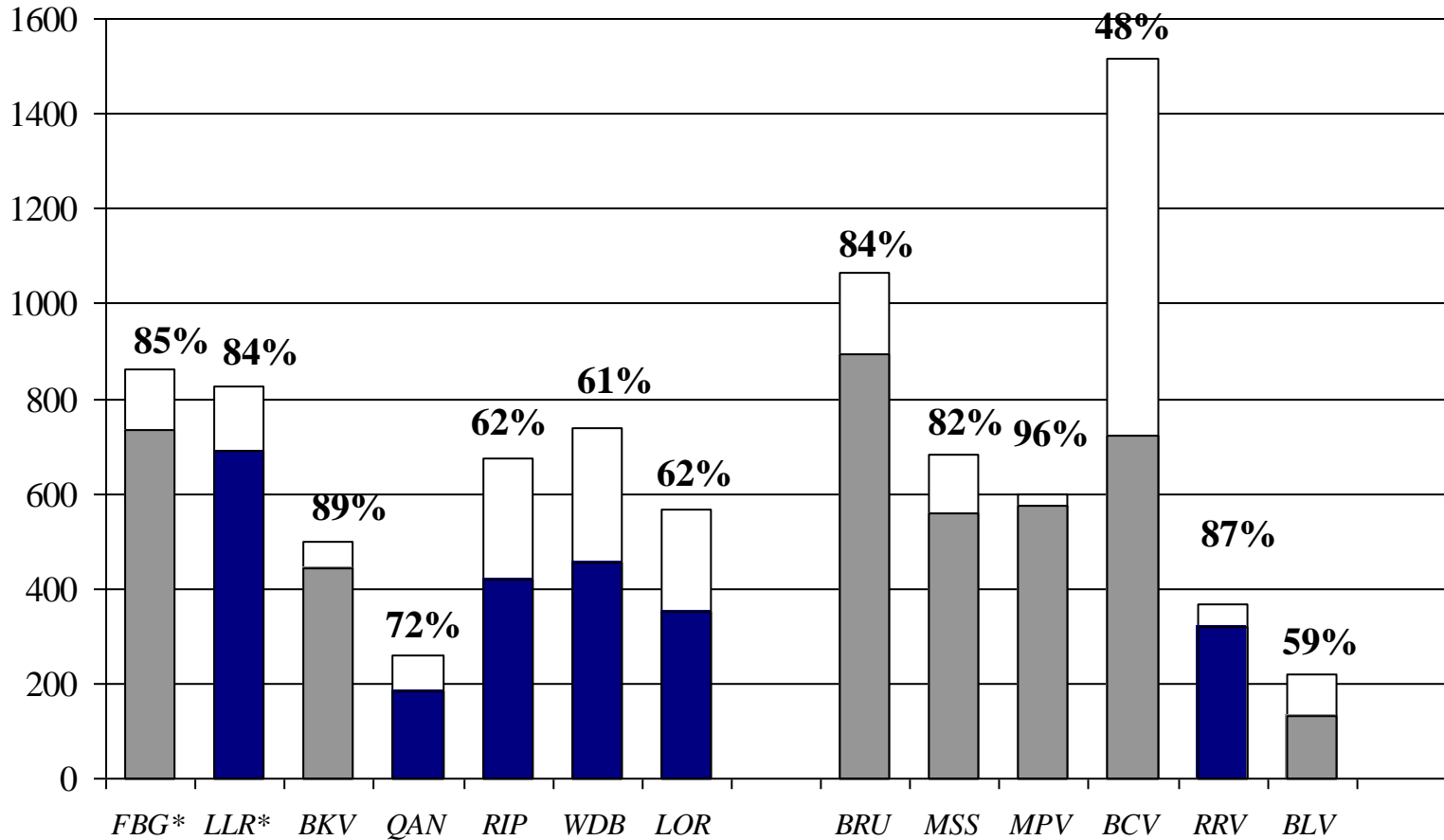
With statistics through
October 30, 2011

VRE Ridership

(July 1997 – December 2011)



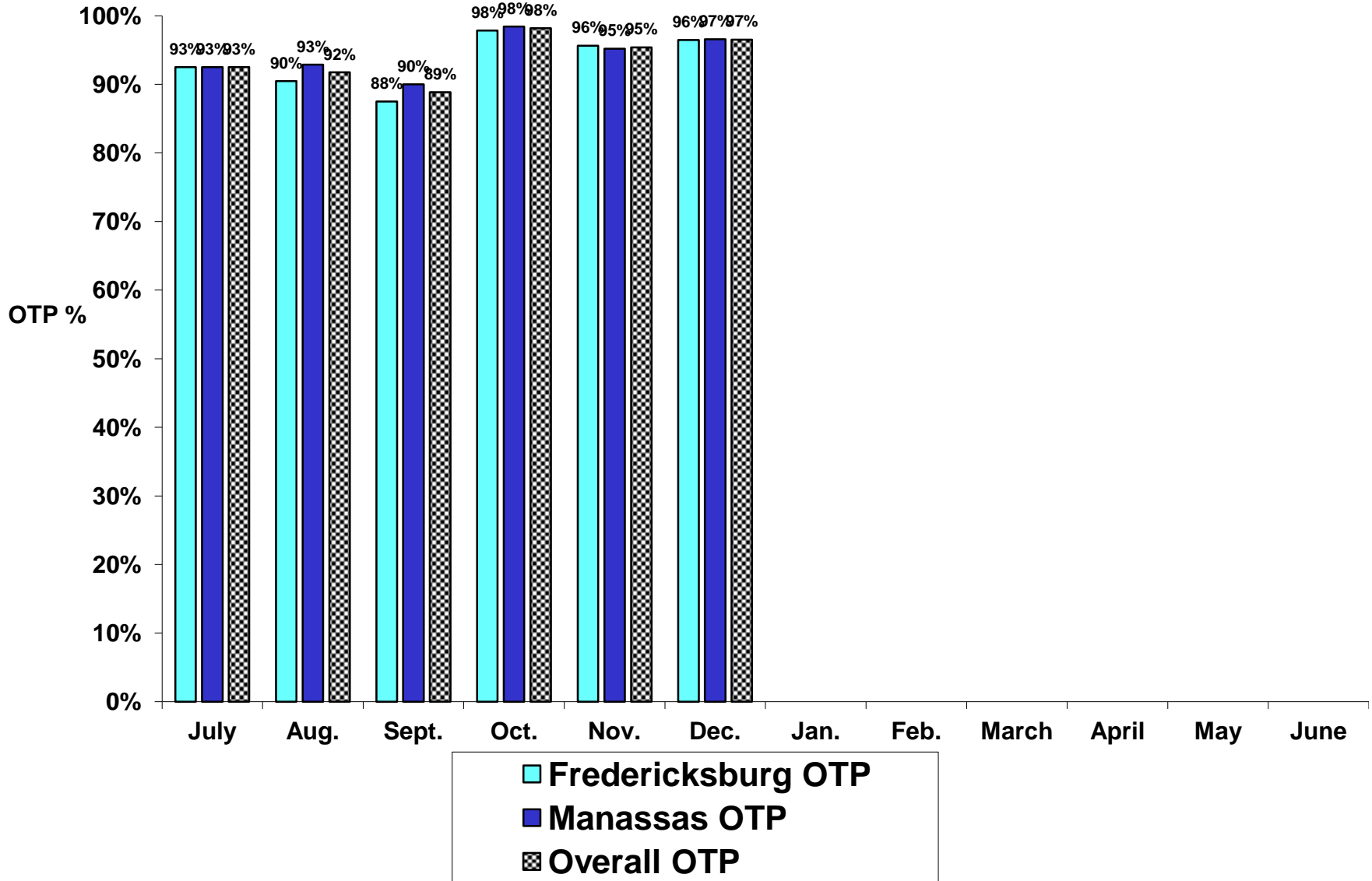
Parking Lot Utilization: December 2011



*Denotes stations with overflow parking available that is now being included in final counts.

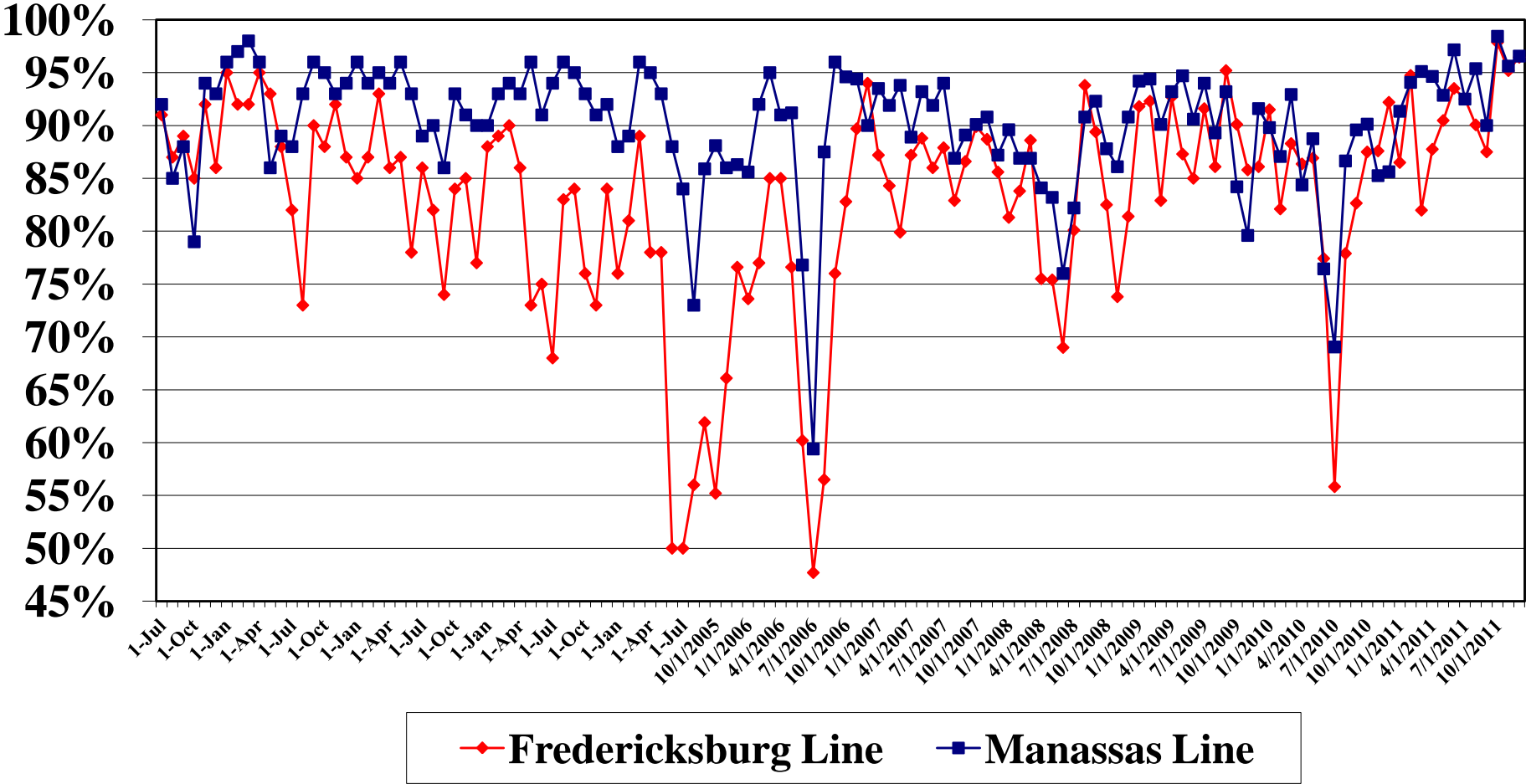
□ # of spaces ■ # in use

Average On-Time Performance FY-2012



On-Time Performance

July 2001 – December 2011



Ridership Growth

	MANASSAS			FREDERICKSBURG				
Current Month	Cumulative FY2011	Cumulative FY2012	% change	Cumulative FY2011	Cumulative FY2012	% change	Current Total	% change
July	177,199	174,866	-1.3%	183,554	203,162	10.7%	378,028	4.8%
August	356,554	379,224	6.4%	369,561	430,255	16.4%	809,479	11.5%
September	531,826	561,165	5.5%	560,951	628,888	12.1%	1,190,053	8.9%
October	687,461	747,745	8.8%	749,050	833,524	11.3%	1,581,269	10.1%
November	842,550	929,938	10.4%	936,793	1,032,918	10.3%	1,962,856	10.3%
December	992,422	1,111,082	12.0%	1,119,345	1,218,911	8.9%	2,329,993	10.3%
January	1,156,798			1,311,930			0	
February	1,321,505			1,503,871			0	
March	1,530,573			1,744,670			0	
April	1,721,462			1,959,234			0	
May	1,916,908			2,172,606			0	
June	2,118,380			2,398,986			0	

*Ridership figures are shown in passenger trips. Includes Amtrak cross honor train riders.

Manassas Line Capacity

Train #	# of seats	Daily Average	% use	Mid Week	% use	Peak %
322	819	653	80%	636	78%	-2%
321	819	6	1%	6	1%	0%
332	819	846	103%	865	106%	2%
333	819	781	95%	773	94%	-1%
324	873	609	70%	593	68%	-2%
335	873	373	43%	418	48%	5%
326	1086	824	76%	875	81%	5%
331	1086	868	80%	903	83%	3%
328	1098	831	76%	829	76%	0%
325	1098	249	23%	177	16%	-7%
336	1098	48	4%	18	2%	-3%
329	1098	1015	92%	1023	93%	1%
330	831	779	94%	799	96%	2%
327	831	877	106%	876	105%	0%
338	831	10	1%	9	1%	0%
337	831	170	20%	177	21%	1%

Fredericksburg Line Capacity

Train #	# of seats	Daily Average	% use	Mid Week	% use	Peak %
300	663	538	81%	552	83%	2%
313	663	220	33%	236	36%	2%
302	798	551	69%	528	66%	-3%
303	798	1082	136%	1077	135%	-1%
304	819	824	101%	864	105%	5%
309	819	834	102%	829	101%	-1%
306	1095	809	74%	774	71%	-3%
307	1095	704	64%	722	66%	2%
308	798	801	100%	815	102%	2%
305	798	874	110%	907	114%	4%
310	826	550	67%	560	68%	1%
311	826	418	51%	479	58%	7%
312	531	387	73%	411	77%	5%
301	531	300	56%	211	40%	-17%