



Virginia Railway Express

Public Open House
VRE L'Enfant Station and Fourth Track
Preliminary Engineering/NEPA Phase

WMATA HQ
February 5, 2025 from 3:30PM - 7:00PM

STAFF ATTENDEES

Name	Role	Entity	Present?
Dagmawie Shikurye	PM	VRE	Y
Christine Hoeffner	DPM	VRE	Y
Karen Finucan Clarkson	Marketing/Comms	VRE	Y
Mark Schnaufer	(on behalf of Long Bridge Project)	VPRA	Y
Mark Colgan	PM	VHB	Y
Josh Bendyk	DPM	VHB	Y
Lee Farmer	Environmental Lead	VHB	Y
Meghan Powell	SOSEL	VHB	
Chloe Swann	Engineering	VHB	Y
Lee Dwyer	Stakeholder Engagement	VHB	Y
Monique Harris	Event host	WMATA	

GENERAL/NON-STAFF ATTENDEES (25 total)

Name	Stakeholder Organization/Role
Mark Scheufler	VRE rider/community member
Peter Darmody	WMATA
Mac Hughes-Cromwick	WMATA
Jacquie Holder	Holiday Inn Capital
Ted DeLio	Kimley-Horn
Michael Jerakis	Greater Washington Partnership
Doyle Cockram	community member
Lysa Cockram	community member
MacKenna Hannibal	Clark Construction
Ahmed Aljafar	Stacy Witbeck
Andrew Justus	VRE rider/community member
Meredith Judy	VPRA
Gottlieb Simon	ANC 6D
Ken Prince	Stacy Witbeck
Matt Jett	VPRA
Jim Ashe	WMATA
David Spratley	Gannett Fleming
Nat van Arkel-Priest	WMATA
Noah Hagen	DDOT
Drew Morris	WMATA
Aden Yacobi	community member
Andrea Powell	DCHA/community member
Geoff Pelletier	VPRA
Ed Hanley	Clark Construction
Seth Garland	WMATA

Names and emails added to Stakeholder Register.



Event Summary

Room Reserved by WMATA: 2:30-7:30 PM

Event Time: 3:30-7 PM

Location: 300 7th St SW, Washington DC, 1st floor boardroom

Access: Enter from main entrance at 7th St and D St SW

1. Overview

- VRE and VHB staff arrived for setup by 3:00 PM.
 - They set up the sign-in table, display easels & boards, and a discussion table with seats near one of the wall screens showing the fly-through.
 - Comment cards, sticky notes, and pens/markers were available on tables.
 - Lee Dwyer ran the looping fly-through video to the room's AV, showing on several screens around the room.
- Between 3:30-7, VRE and VHB staff stationed themselves near specific boards or at sign-in table as needed, spoke individually with participants, and walked them through the display boards.
 - 25 total attendees, many of them from stakeholder organizations.
 - Of those 25, there were 6 community members.
- Following the event, VHB staff took photos of the display boards and sign-in sheets, then gathered the easels along with comment cards, sticky notes, and all other supplies. VRE staff kept the display boards for future engagements.

2. Discussion/feedback from participants

- Mostly positive attitudes or neutral curiosity towards VRE and station improvements.
- Most who spoke to VRE/VHB team were from stakeholder organizations or contractor firms.
 - One ANC representative attended (Gottlieb Simon); he is new to the ANC and to the project, since he won the seat in the November 2024 election, and wanted an overview of the project.
 - Seth Garland from WMATA discussed potential elevator connections with VHB team.
- Of the community members, most worked nearby and/or were VRE riders, or said some of their co-workers commute via VRE.
- Comments – 8 total from 6 people: 5 written comments, 1 verbal, and 2 via follow-up emails
 - 5 positive comments:
 - *Excited about island platform with elevators.*
 - *Great work, keep it up!*
 - *Thank you for inviting the neighbors.*
 - *A very important project for VRE and Amtrak, in addition to the new Long Bridge (Steve Strauss, via email).*



- *Thanks again to you and the team for your important work driving the region forward! (Michael Jerakis, via email).*
- 1 comment in support of off-peak service: *Increased evening schedules.*
- 2 comments regarding safety/lighting:
 - *Lighting under bridges*
 - *Will entrance be closeable/lockable? and will the 7th street entrance would be dangerous if you're walking along sidewalk (not able to see around the corner, could run into someone). (Gottlieb Simon, in person.)*

3. Recommendations for future events:

- Attendance was highest by those who were in the stakeholder group or worked within the building; the location was not as conducive to walk-ins as a pop-up event though it was conveniently close to the VRE station itself.
- Attendance was low after approximately 5:30-6 pm. Could likely end event earlier.
- Fly-through video was popular and drew attention. Along with the display boards, it generated some fruitful conversations.
- Staff at future events should encourage participants to fill out comment cards or write down notes of questions/comments shared during one-on-one conversations, to capture that engagement.

4. Social Media Graphics & Photos

See below; photos also saved to SharePoint.

All Aboard for a Public Open House!

Join us to learn more about the VRE L'Enfant Station and Fourth Track Improvements Project.

DATE ▶ February 5, 2025

TIME ▶ 3:30 – 7:00 PM

LOCATION ▶ 300 7th St SW (WMATA building)

VRE Riders!

Join us February 5th

for an open house about the **L'Enfant Station and Fourth Track Improvements Project.**

DATE ▶ February 5, 2025

TIME ▶ 3:30 – 7:00 PM

LOCATION ▶ 300 7th St SW (WMATA building)



Join us

February 5th for a Public Open House

to learn more about the VRE L'Enfant Station and Fourth Track Improvements project!

DATE ▶
February 5, 2025

TIME ▶
3:30 – 7:00 PM

LOCATION ▶
300 7th St SW
(WMATA building)



SAVE THE DATE - FEBRUARY 5, 2025

VRE L'Enfant Station and Fourth Track Improvements

Please join us!

WHAT	WHEN	WHERE
Public Open House	February 5, 3:30 – 7 PM	300 7th Street SW (WMATA)

Virginia Railway Express (VRE) is currently in the Preliminary Engineering and NEPA phase of the L'Enfant Station and Fourth Track Improvements Project. This project will enhance rail operations and increase capacity at the VRE L'Enfant Station, located between 6th and 7th Streets SW, by adding a fourth track and building a larger center platform with more space for passengers and the ability to serve two trains at a time.

As the project continues through the 30% design phase, VRE is holding a public open house on February 5, 2025, between 3:30 and 7 PM, in the WMATA headquarters building at 300 7th St SW. We invite VRE riders, residents living near the station, workers in the area, adjacent property owners or managers, and other community members to stop by, learn more and share your input on the current designs!




Above: social media posts, email flyer. Below: photos from the event.





How To Give Feedback

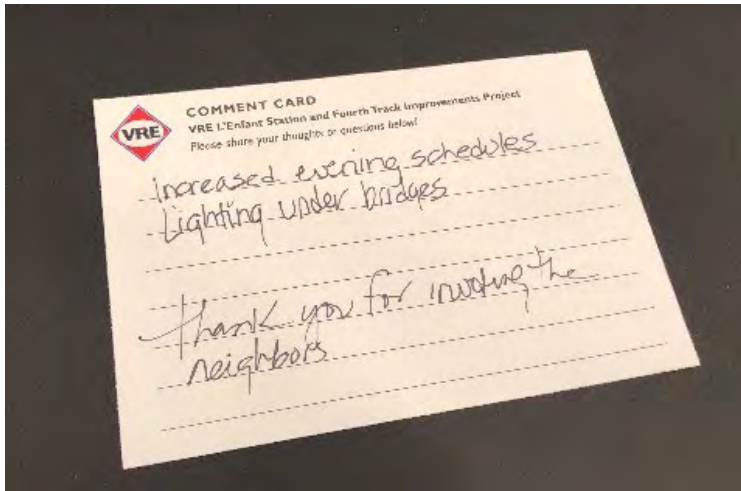
**LEAVE A COMMENT
HERE TODAY!**

Share your questions, ideas, and concerns today! You can talk to our staff, fill out a comment card, or add a sticky note below.

Excited about
Island platform
with elevators

Great work,
Keep it up!
-GWP







Welcome to the Public Open House!

L'Enfant Station and Fourth
Track Improvements Project

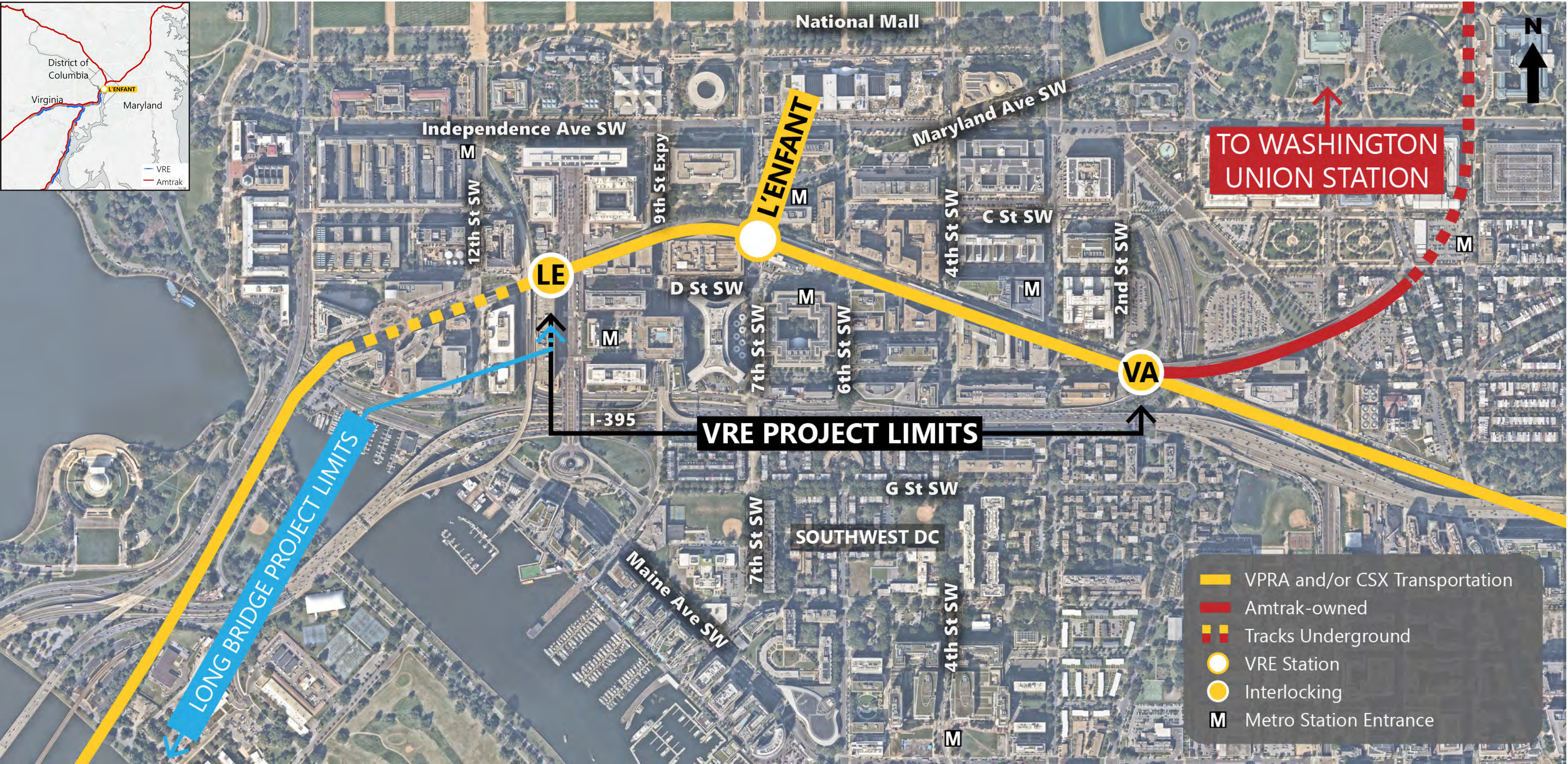
3:30 pm to 7:00 pm

Provide comments today!

*For more details and future project updates,
scan QR code or visit www.vre.org.*



Project Location



Why This Project

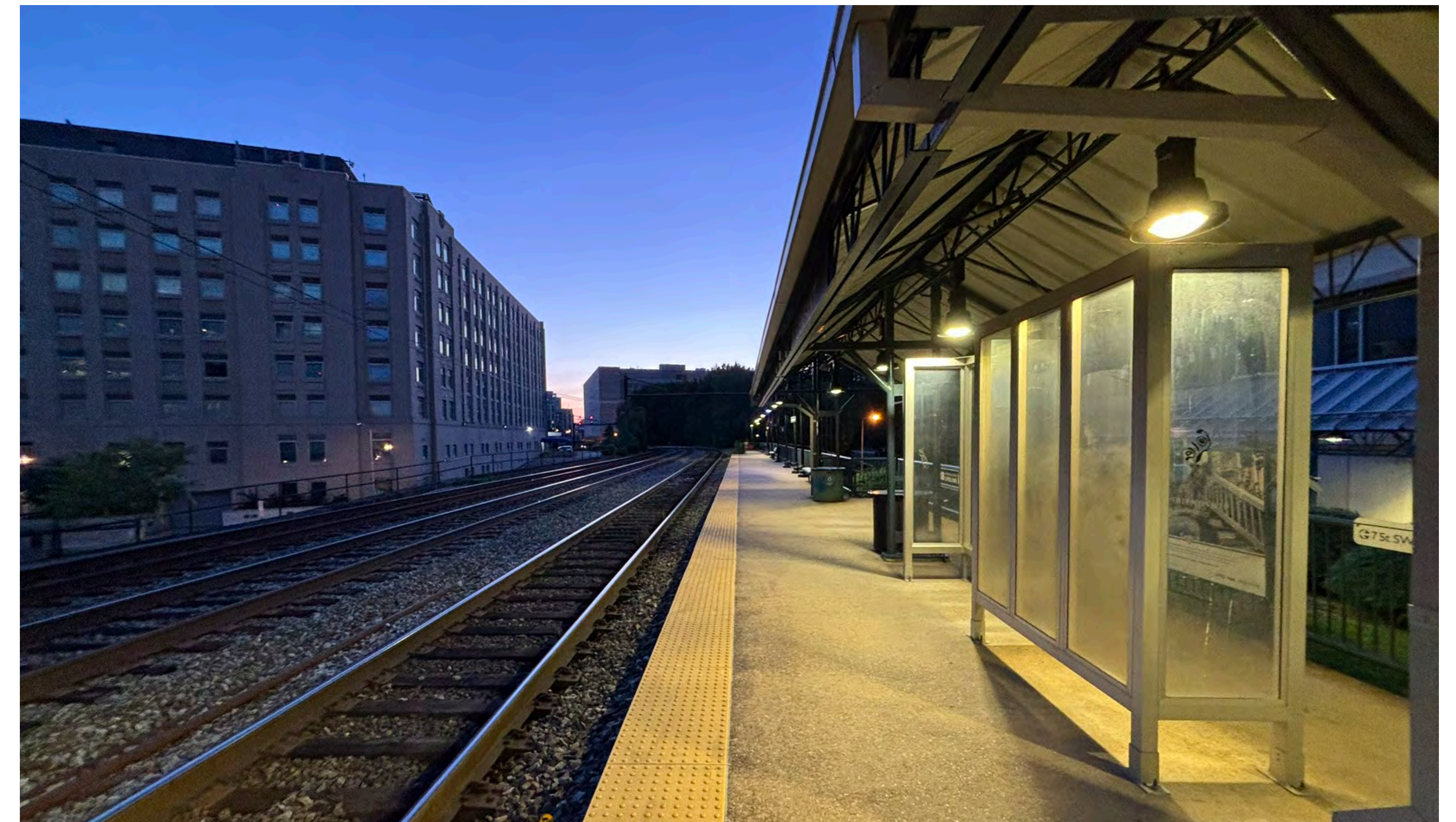


Existing Conditions and Constraints

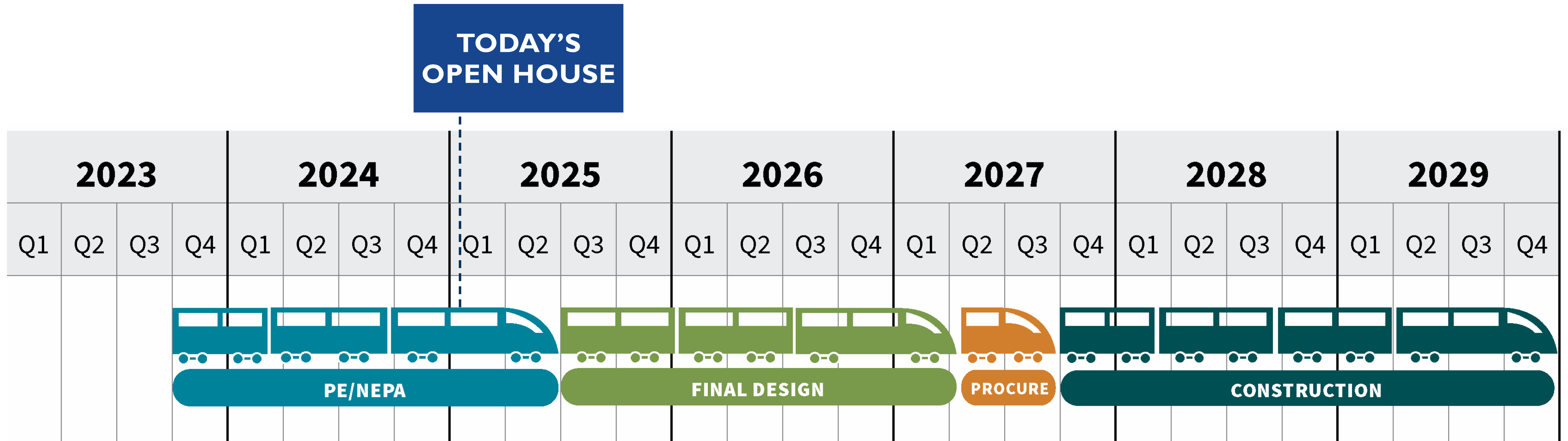
- 3 existing tracks, shared by freight and passenger trains
- Station serves 1 train/direction at a time
- Platform too short for full 8-car train boarding
- Passenger crowding
- Dense urban area with heavily used infrastructure

Project Goals

- Increase rail capacity and reduce conflict between passenger and freight trains
- Allow 2 trains/directions at a time
- Accommodate longer trains and reduce crowding
- Remain within existing railroad right-of-way wherever possible
- Improve station accessibility with an elevator at each entrance and integrate the station with the surrounding community



Project Timeline



Next Steps

- Completion of NEPA Environmental Review and Preliminary Engineering: mid-2025
 - Final Design: expected to begin 2nd half of 2025
 - Construction: anticipated 2027 – 2029
- ▶ *Public engagement and stakeholder coordination will continue throughout the NEPA process and into final design.*
 - ▶ *VRE is exploring construction options which could include alternative project delivery methods.*

7th Street SW Entrance

EXISTING CONDITION



600 Maryland Ave loading area
(Smithsonian office building)

PROPOSED CONDITION



**Renderings above are illustrative; future appearance or design elements may change in final design.*

PROPOSED CONDITION



- Removes existing VRE station stairs and ADA accessible ramp
- Connects street entrance to L'Enfant station platform through a proposed tunnel with elevator and stairs

- Expands existing bridge to the north to fit the fourth track
- Will match bridge design and appearance to the existing bridge

6th Street SW Entrance

EXISTING CONDITION



600 Maryland Ave loading area
(Smithsonian office building)

PROPOSED CONDITION



PROPOSED CONDITION



- Removes existing VRE station stairs
- Connects street entrance to L'Enfant station platform through a proposed tunnel with elevator and stairs
- Replaces existing bridge with new bridge to support expanded platform and fourth track

PROPOSED CONDITION



**Renderings above are illustrative; future appearance or design elements may change in final design.*

Station Platform

PROPOSED CONDITION



**Renderings above are illustrative; future appearance or design elements may change in final design.*

- Replaces existing side platform with center platform
- Connects platform to street entrances via elevators and stairs at either end
- Features benches, lighting, security cameras, and canopy with windowed skylights over stairs

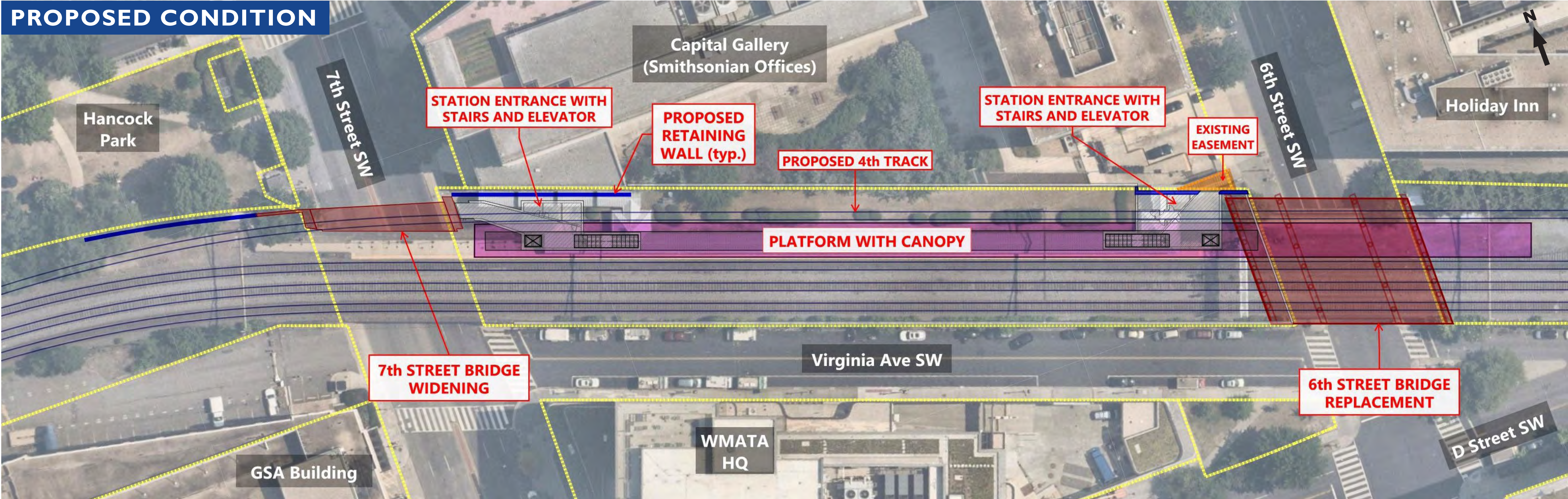
PROPOSED CONDITION



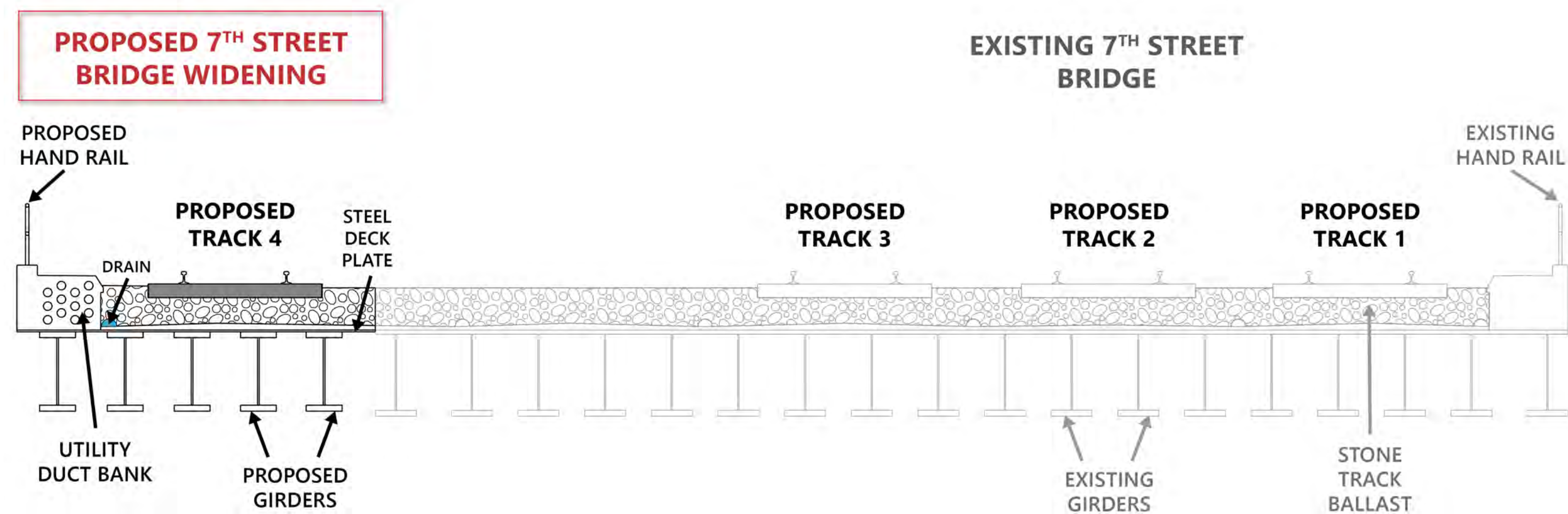
PROPOSED CONDITION



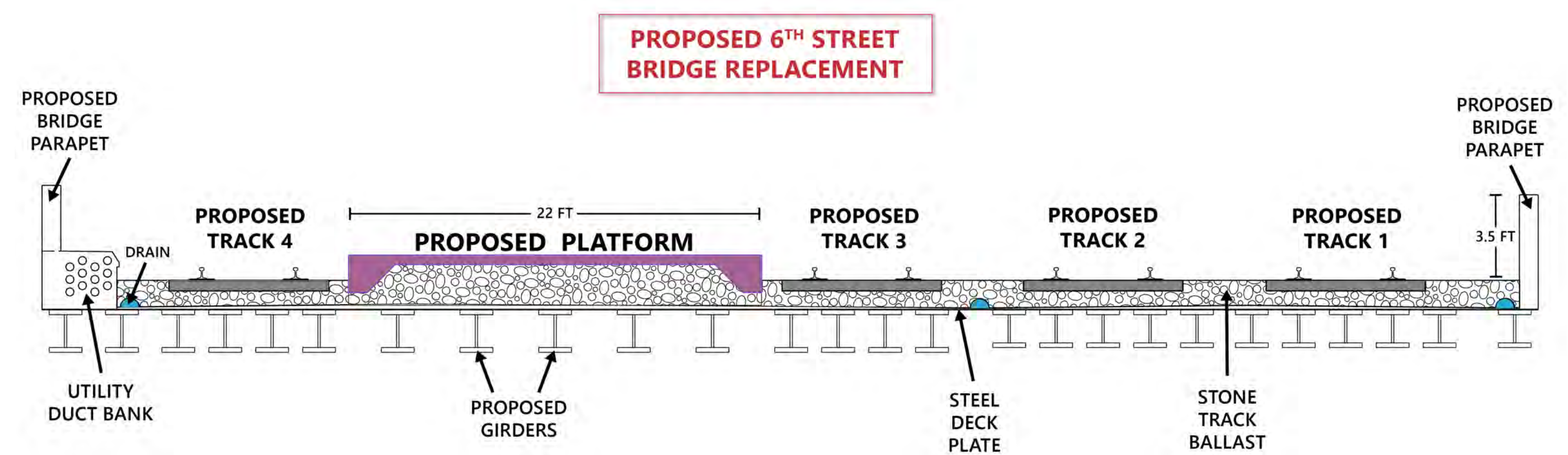
Station and Track Design Details



CROSS-SECTION: 7TH ST SW BRIDGE



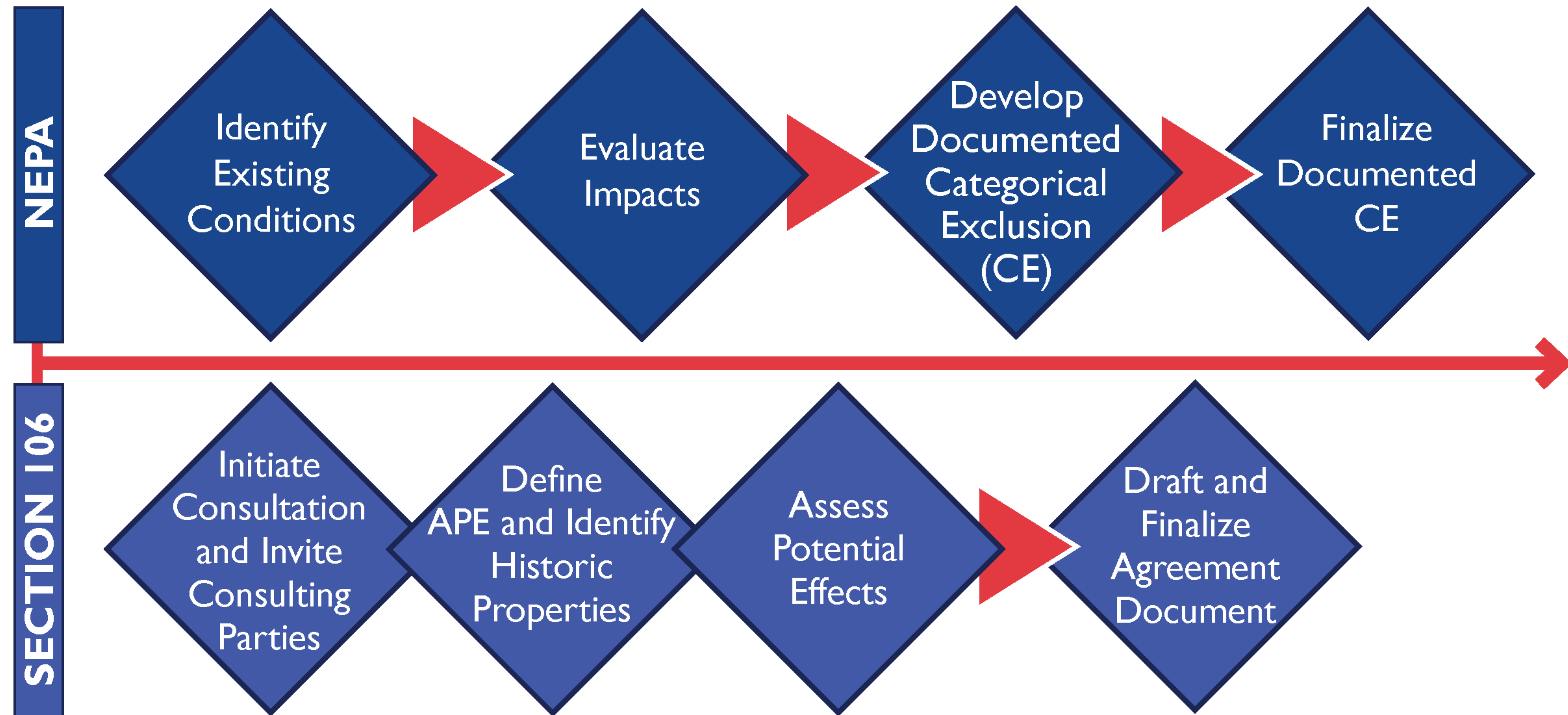
CROSS-SECTION: 6TH ST SW BRIDGE



NEPA & Section 106 Process

The National Environmental Policy Act of 1969 (**NEPA**) requires assessment of the environmental impacts of proposed Federal actions before making final decisions on location, design, and construction.

Section 106 of the National Historic Preservation Act requires consultation with State Historic Preservation Offices, Tribes, and other parties in determining the potential effects of a project on historic properties within a defined area of potential effects (APE).

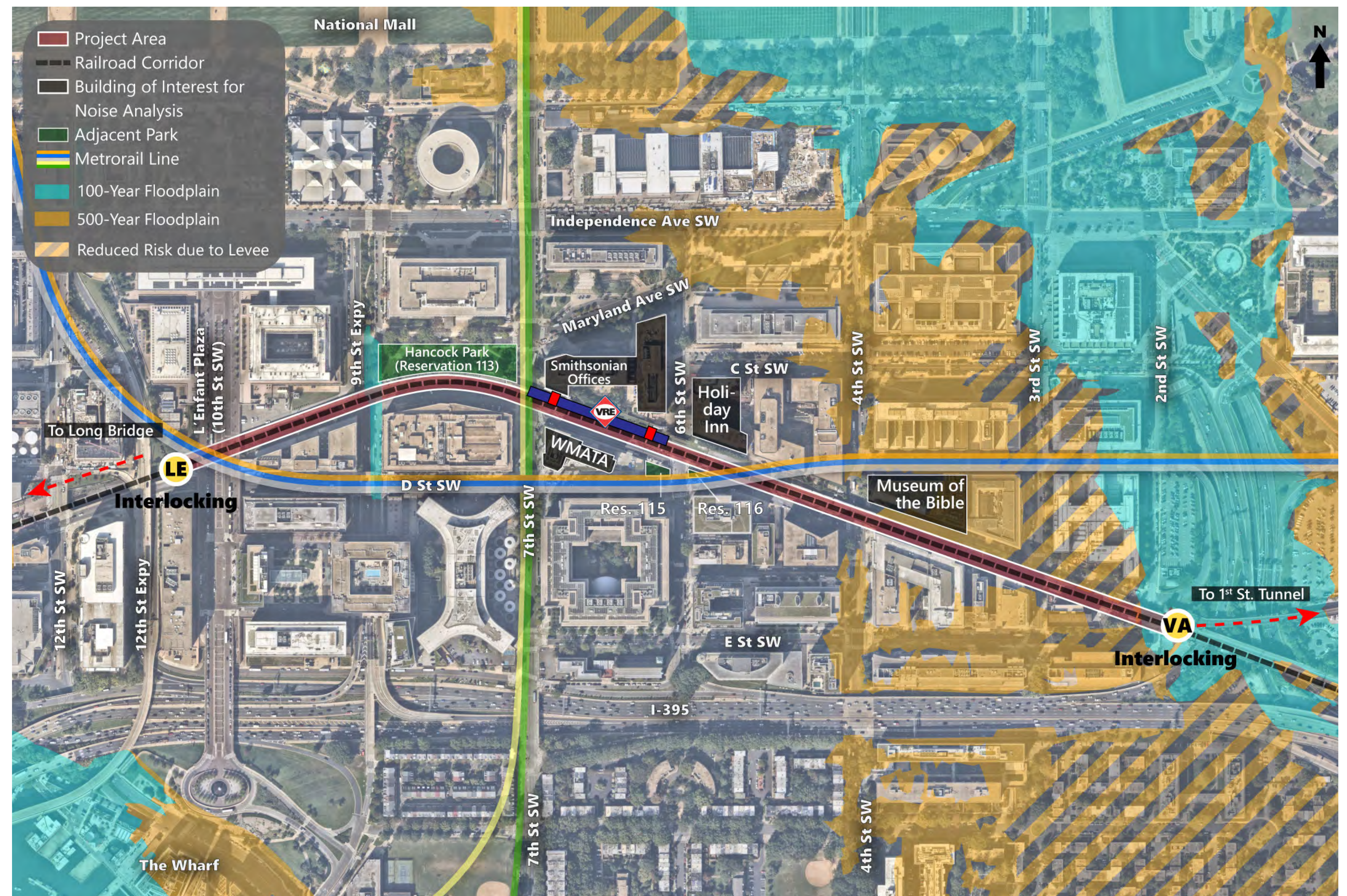


Environmental Resources

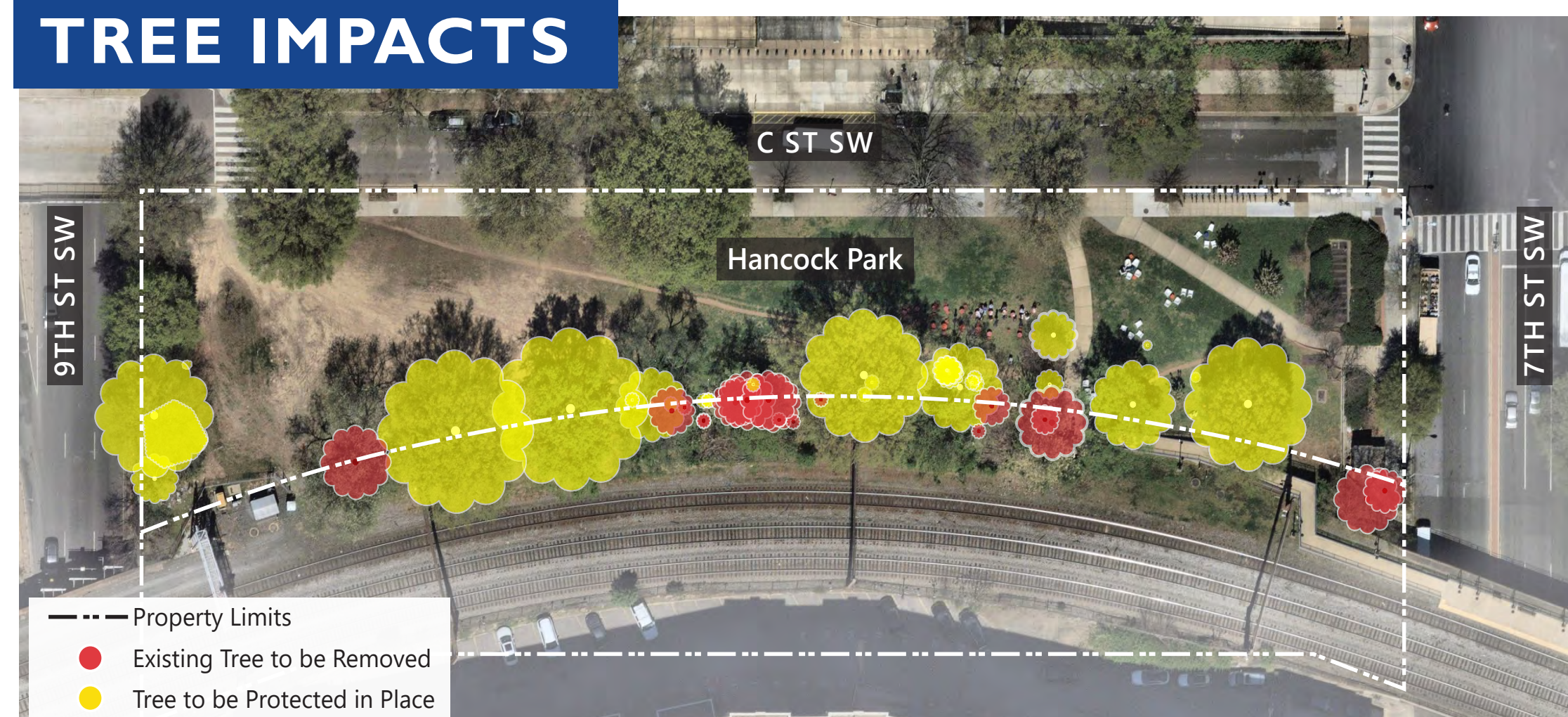
The National Environmental Policy Act (NEPA) of 1969 requires assessment of the environmental impacts of proposed Federal actions before making final decisions on location, design, and construction.

Resources of Interest:

- Noise and Vibration
- Traffic and Transportation
- Parks and Recreation Areas
- Aesthetics/Visual Quality
- Historic Resources (Section 106)



TREE IMPACTS

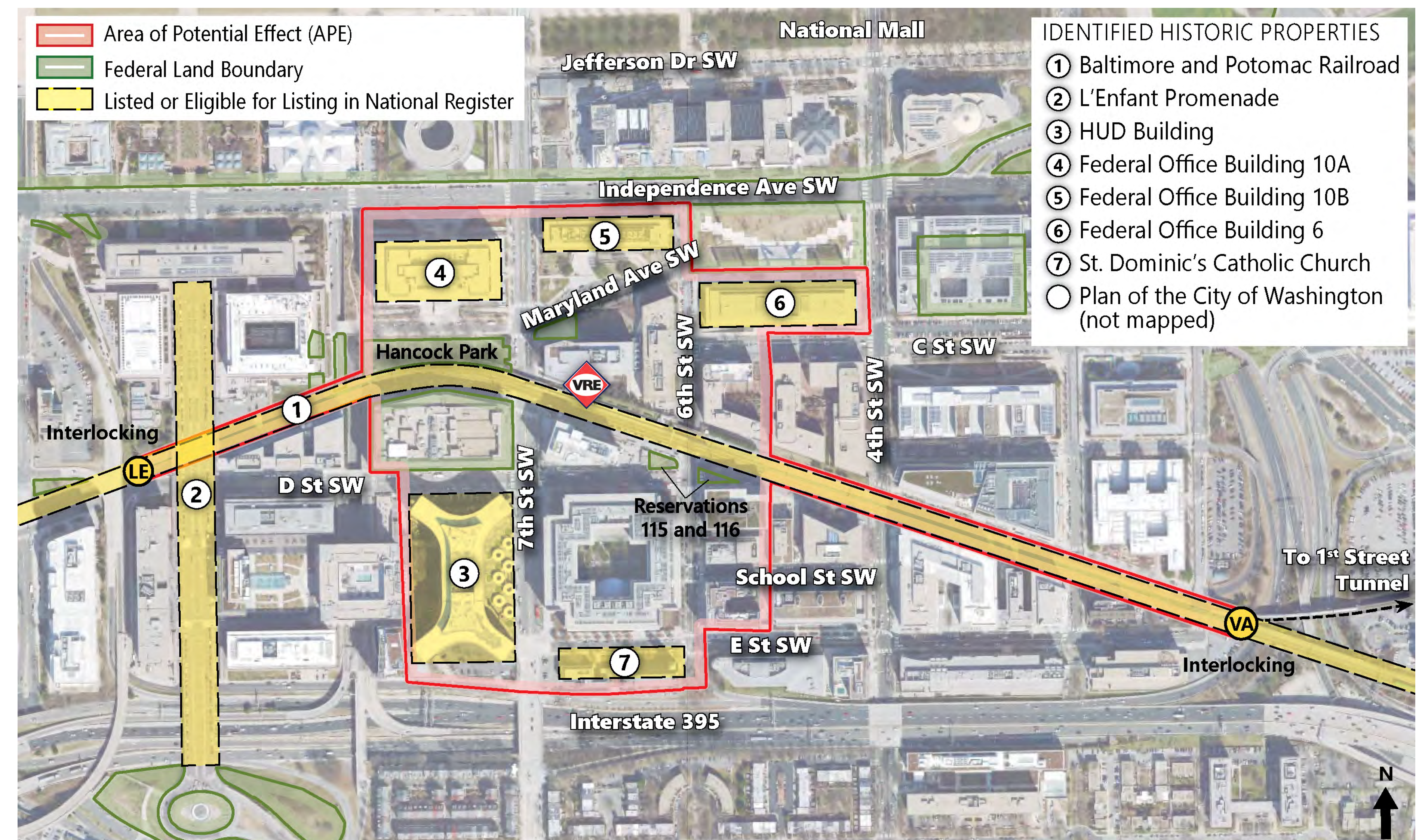


*All trees to be removed are within railroad right-of-way.

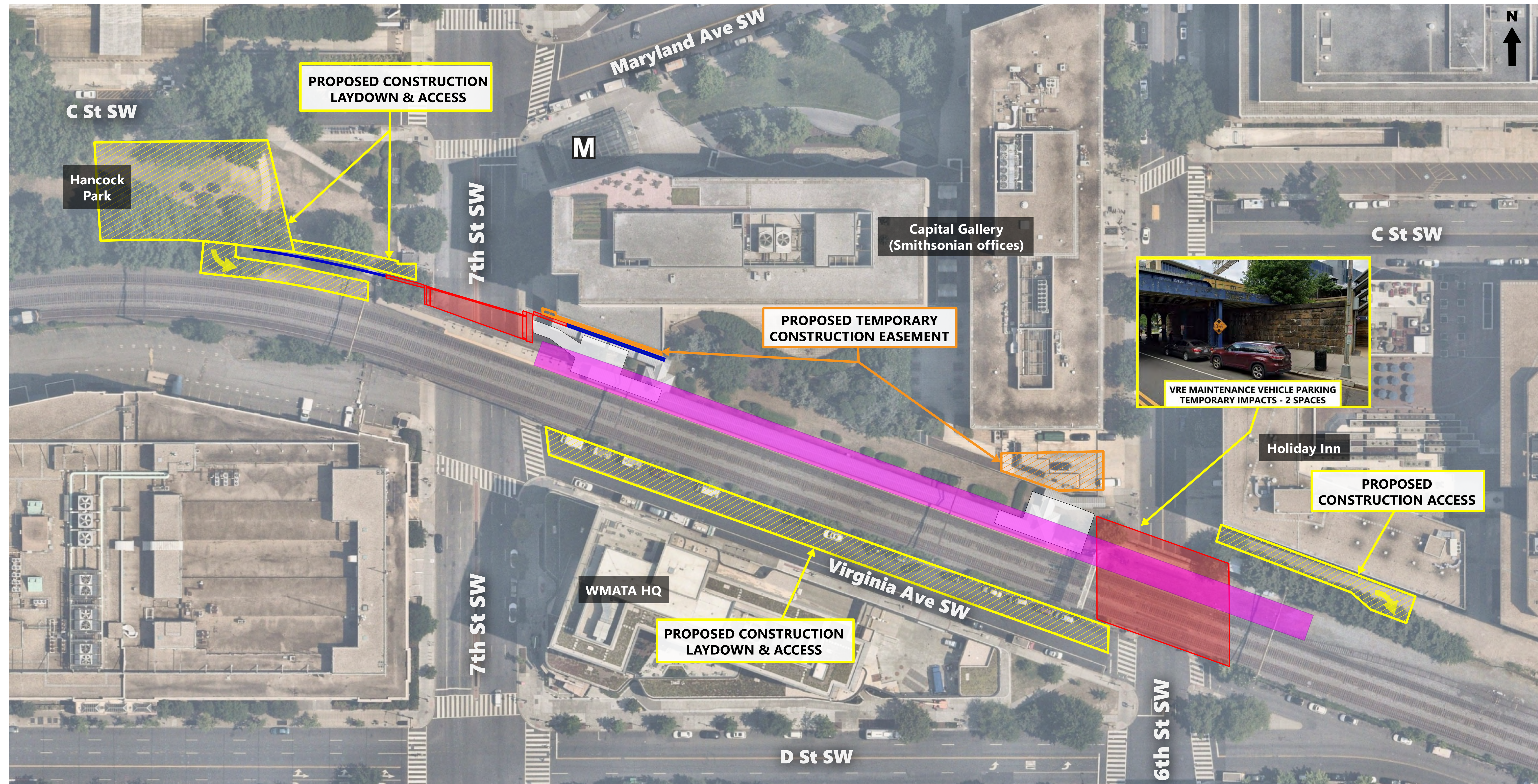
Section 106 Summary

Section 106 of the National Historic Preservation Act requires consultation with State Historic Preservation Offices, Tribes, and other parties in determining the potential effects of a project on historic properties.

- Identified proposed Area of Potential Effect (APE) and historic properties near L'Enfant Station
- Determined eligibility of 2 properties:
 - ▶ Baltimore & Potomac Railroad - Recommended Eligible
 - ▶ American Road Builders Association Building - Recommended not eligible
- Continuing coordination with the DC Historic Preservation Office and Consulting Parties



Construction Staging/Access



Hatched construction laydown/access area shown on Virginia Avenue SW to be coordinated with DDOT and adjacent property owners/stakeholders. Limits shown are preliminary, with any temporary street closures to be minimized where possible.

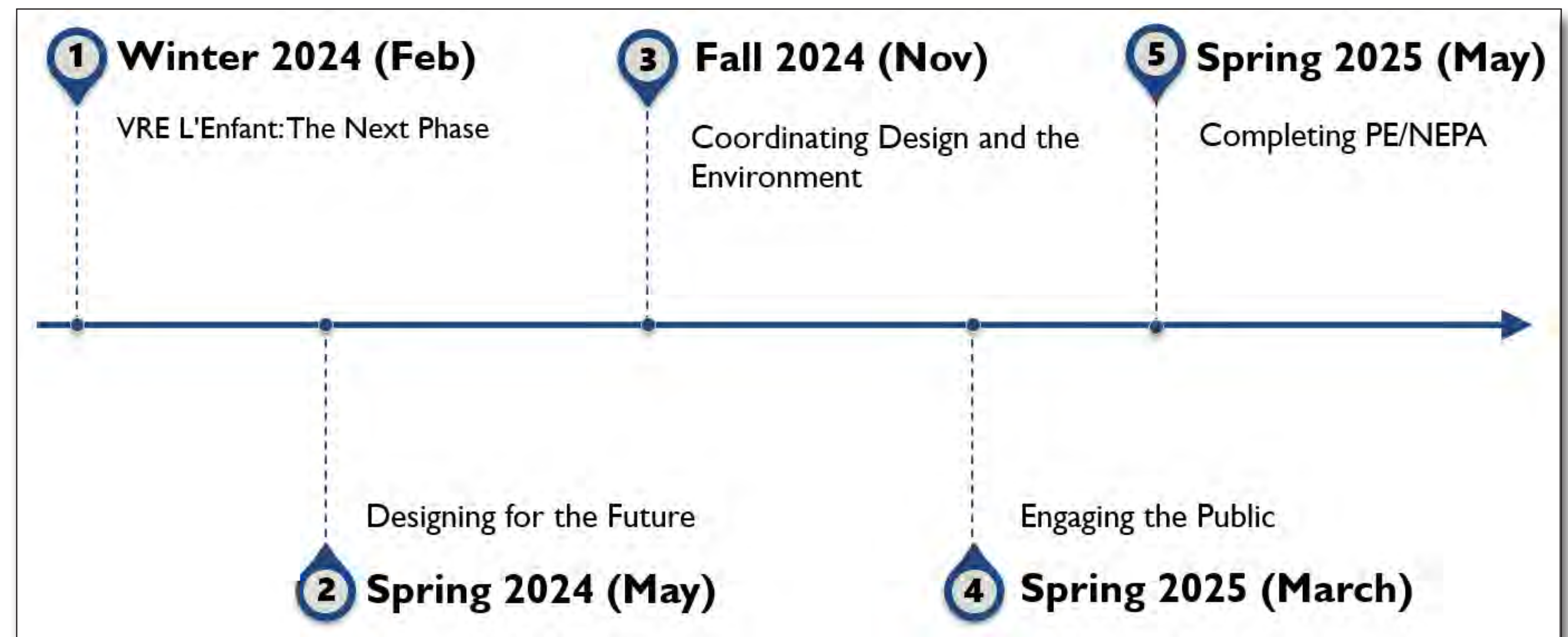
Stakeholder Engagement

Working Group Members

- Advisory Neighborhood Commission 6D
- Amtrak
- Commission of Fine Arts
- Committee of 100 on the Federal City
- CSXT
- DC Office of Planning
- Virginia Department of Rail and Public Transportation
- District Department of Energy and Environment
- District Department of Transportation
- DC Historic Preservation Office
- Federal City Council
- Federal Railroad Administration
- Federal Transit Administration
- General Services Administration
- Greater Washington Partnership
- National Capital Planning Commission
- National Park Service

- NPS National Mall and Memorial Parks
- Northern Virginia Transportation Commission
- Potomac and Rappahannock Transportation Commission
- Smithsonian Institution
- Southwest Business Improvement District
- Southwest Neighborhood Assembly
- Virginia Passenger Rail Authority
- Washington Metropolitan Area Transit Authority
- Nearby property owners

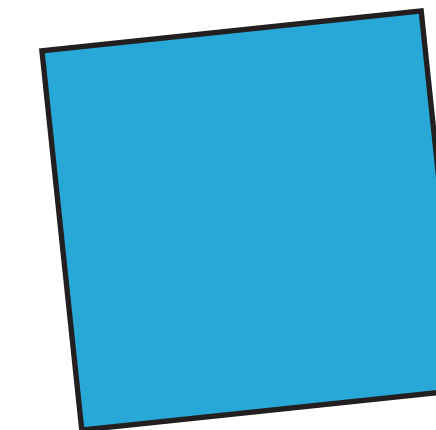
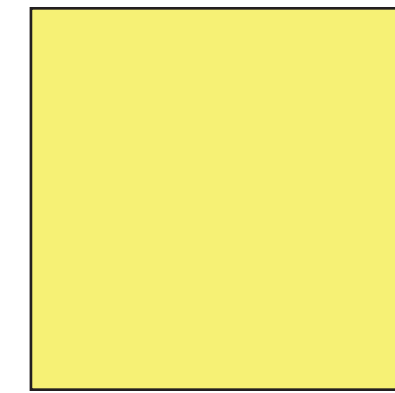
WORKING GROUP MEETINGS



How To Give Feedback

**LEAVE A COMMENT
HERE TODAY!**

Share your questions, ideas, and concerns today! You can talk to our staff, fill out a comment card, or add a sticky note below.



Email comments to:
dshikurye@vre.org

...Or mail comments to:
Virginia Railway Express (VRE)
Attention: LEF/Dagmawie Shikurye
1500 King St., Suite 202
Alexandria, VA 22314

For more details and future project updates, scan QR code or visit:
www.vre.org/projects/details/?ProjectId=21

