

# VIRGINIA RAILWAY EXPRESS L'ENFANT STATION AND FOURTH TRACK



Preliminary Engineering/NEPA Phase

WG Meeting #2:

Designing for the Future

May 16, 2024

# AGENDA

1. Safety Briefing & Introductions
2. WGM #1 – LEF Next Phase Recap
3. Preliminary Engineering Design
4. NEPA
5. Section 106
6. Q&A/Wrap-Up

*This meeting is being recorded. By participating in this meeting, you agree to the recording.*



# PROJECT TEAM



**Dagmawie Shikurye, PE**  
*Project Manager for PE/NEPA Phase*

**Christine Hoeffner**  
*Director of Planning and Environmental Policy*  
*Deputy Project Manager for PE/NEPA Phase*

**Dallas Richards, PE**  
*Chief Engineer*



**Mark Schnauffer**  
*VRE Project Coordination*

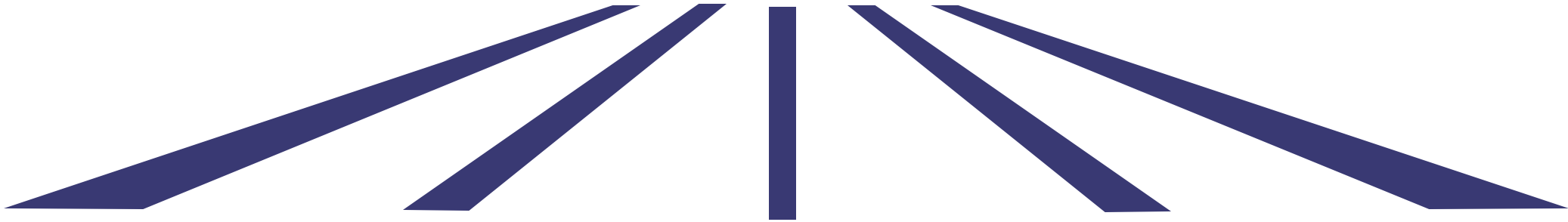
**Naomi Klein**  
*VPRA Planning Project Manager*

**Christine Fix**  
*VPRA Planning Manager*

# CONSULTANT DESIGN TEAM



Project Manager - Mark Colgan, PE  
Deputy Project Manager - Adeel Mysorewala, PE  
Environmental Lead - Lee Farmer  
Stakeholder Lead - Meghan Powell



# WORKING GROUP MEMBERS

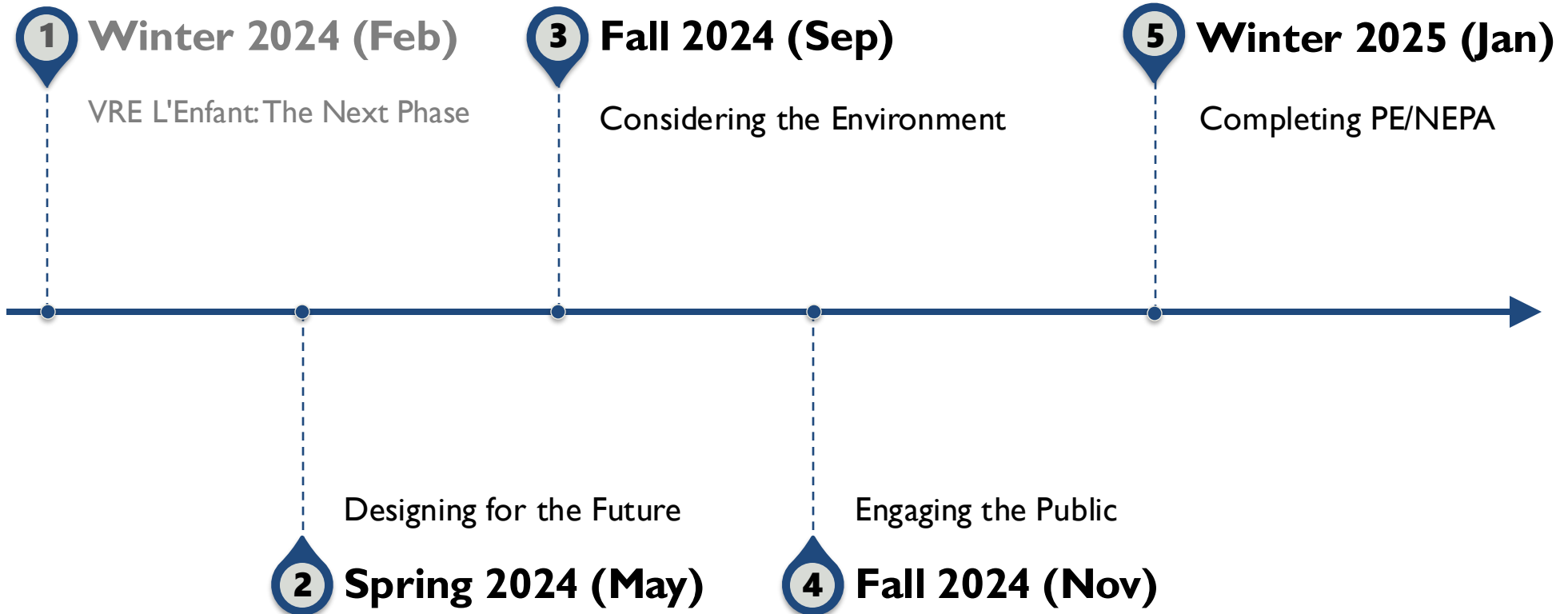
- Advisory Neighborhood Commission (ANC) 6D
- Amtrak
- Commission of Fine Arts (CFA)
- Committee of 100 on the Federal City
- CSXT
- DC Office of Planning (DCOP)
- Virginia Department of Rail and Public Transportation (DRPT)
- District Department of Energy and Environment (DOEE)
- District Department of Transportation (DDOT)
- DC Historic Preservation Office (SHPO)
- Federal City Council
- Federal Railroad Administration (FRA)\*\*
- Federal Transit Administration (FTA)\*
- General Services Administration (GSA)
- Greater Washington Partnership (GWP)
- National Capital Planning Commission (NCPC)
- National Park Service (NPS)
- NPS National Mall and Memorial Parks (NAMA)
- Northern Virginia Transportation Commission (NVTC)
- Potomac and Rappahannock Transportation Commission (PRTC)
- Smithsonian Institution
- Southwest Business Improvement District (BID)
- Southwest Neighborhood Assembly (SWNA)
- Washington Metropolitan Area Transit Authority (WMATA)
- Nearby property owners



# PURPOSE OF WORKING GROUP MEETINGS

- Purpose: To bring together stakeholders with interests, potential concerns, or oversight related to the VRE L'Enfant Station and Fourth Track project
- Goals:
  - Seek ongoing feedback about designs and potential environmental or cultural/historic impacts
  - Provide updates on project progress
  - Inform and support public engagement efforts

# WORKING GROUP MEETINGS



# PRELIMINARY ENGINEERING DESIGN



# 6<sup>TH</sup> STREET BRIDGE REPLACEMENT

- Built circa 1910
- Steel through-plate structure
- Steel piers and masonry abutments
- Vertical clearance
  - Signed = 13'-6"
- Full or partial replacement

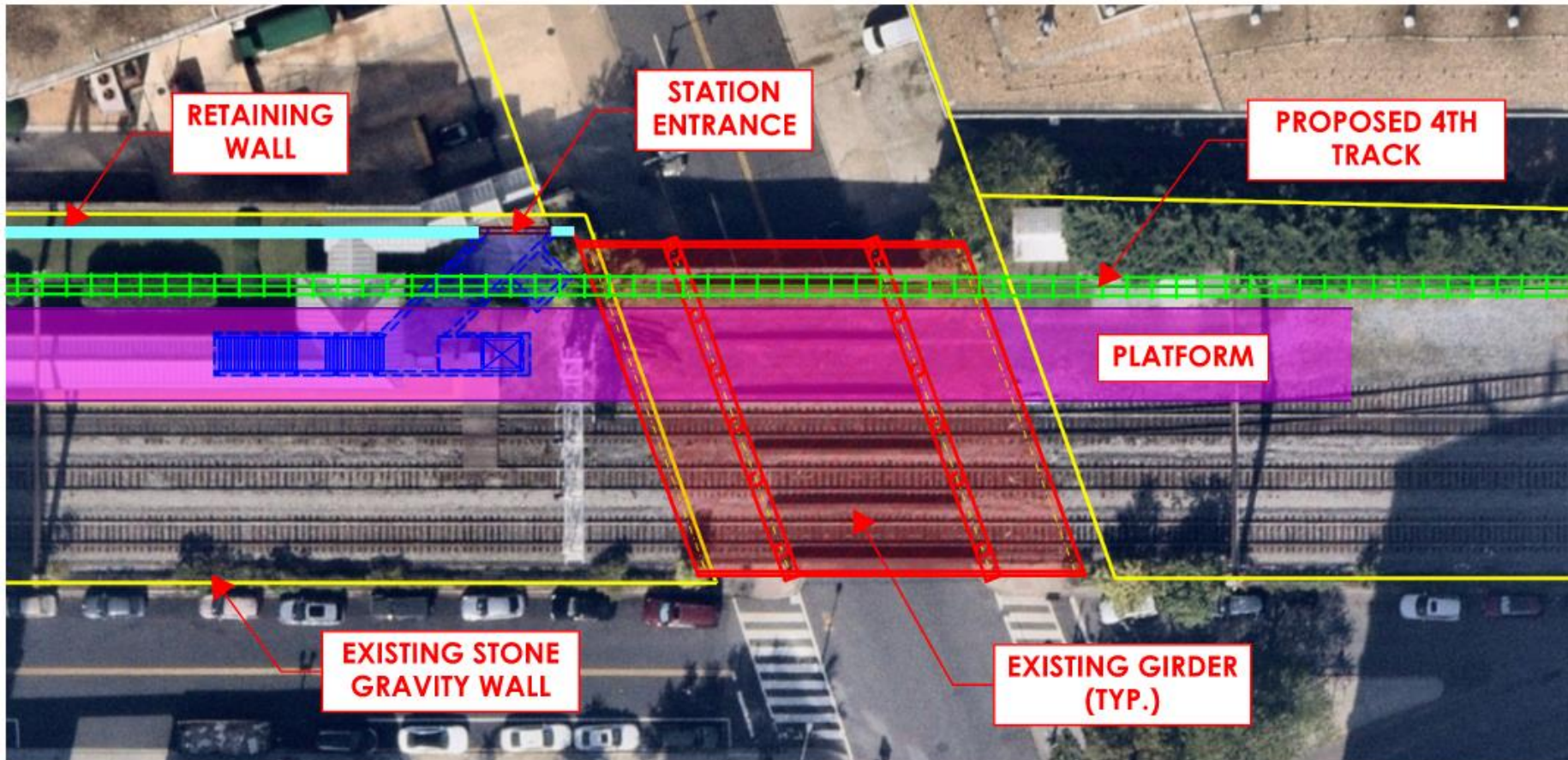


# 6<sup>TH</sup> STREET BRIDGE REPLACEMENT

- Project constraints
  - VRE L'Enfant is a highly-utilized station
  - Congested rail corridor with mixed passenger and freight operations
  - 2 tracks in operation at all times
- Design elements requiring coordination to meet differing stakeholder needs
  - Vertical clearance
  - Track elevation
  - Virginia Ave wall impact
  - Potential historic resource impacts
  - Aesthetics
  - Construction phasing



# 6<sup>TH</sup> STREET BRIDGE REPLACEMENT

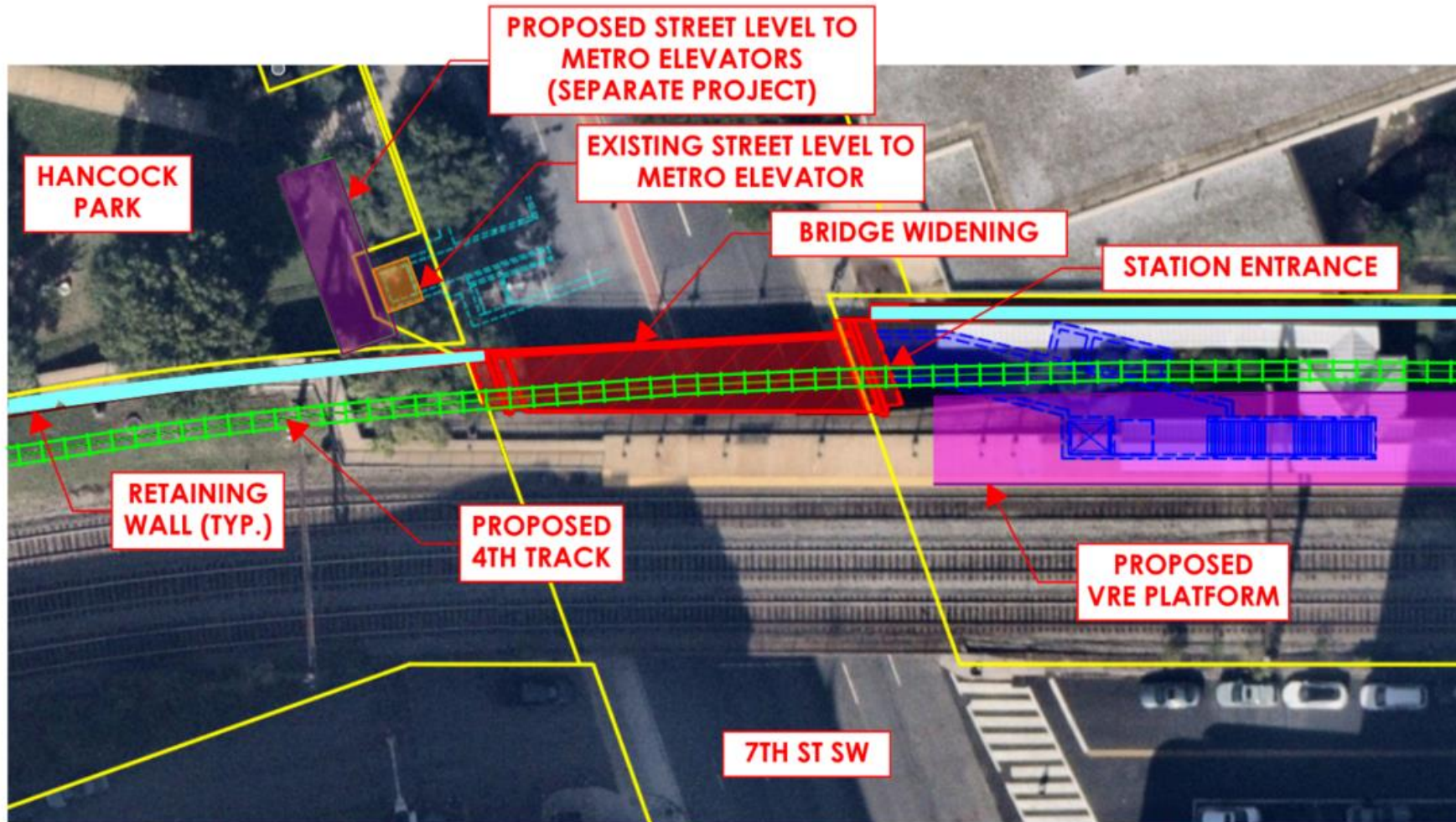


# 7<sup>TH</sup> STREET BRIDGE WIDENING

- Replaced in 1970's by WMATA
- Steel deck-plate structure
- Cantilever abutments
- Vertical clearance
  - Signed = 13'-6"
  - Preliminary survey results: approx. 14'-0"
- Bridge widening to accommodate 4<sup>th</sup> track

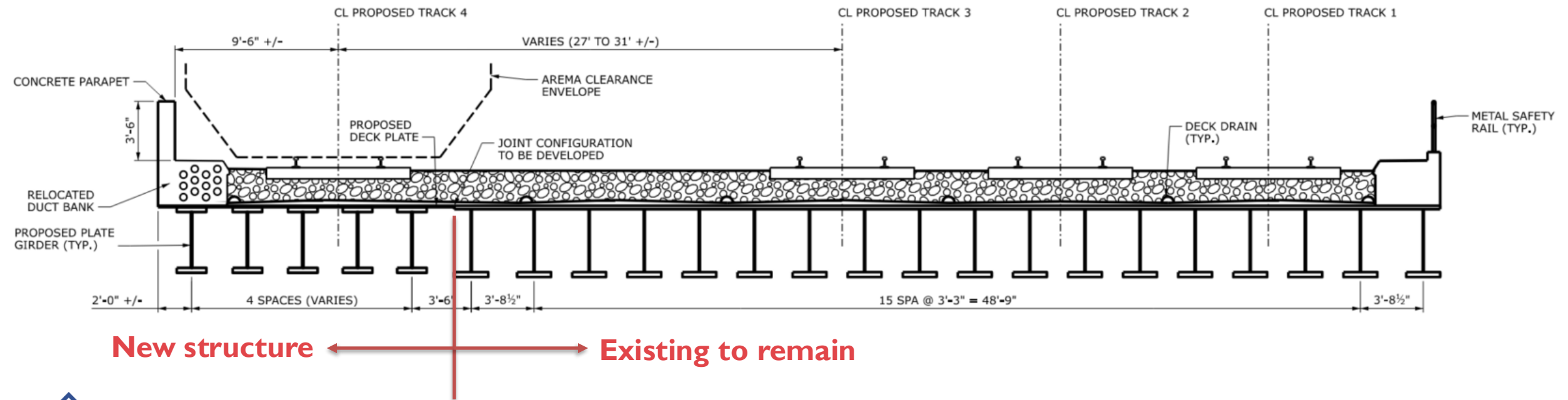


# 7<sup>TH</sup> STREET BRIDGE WIDENING

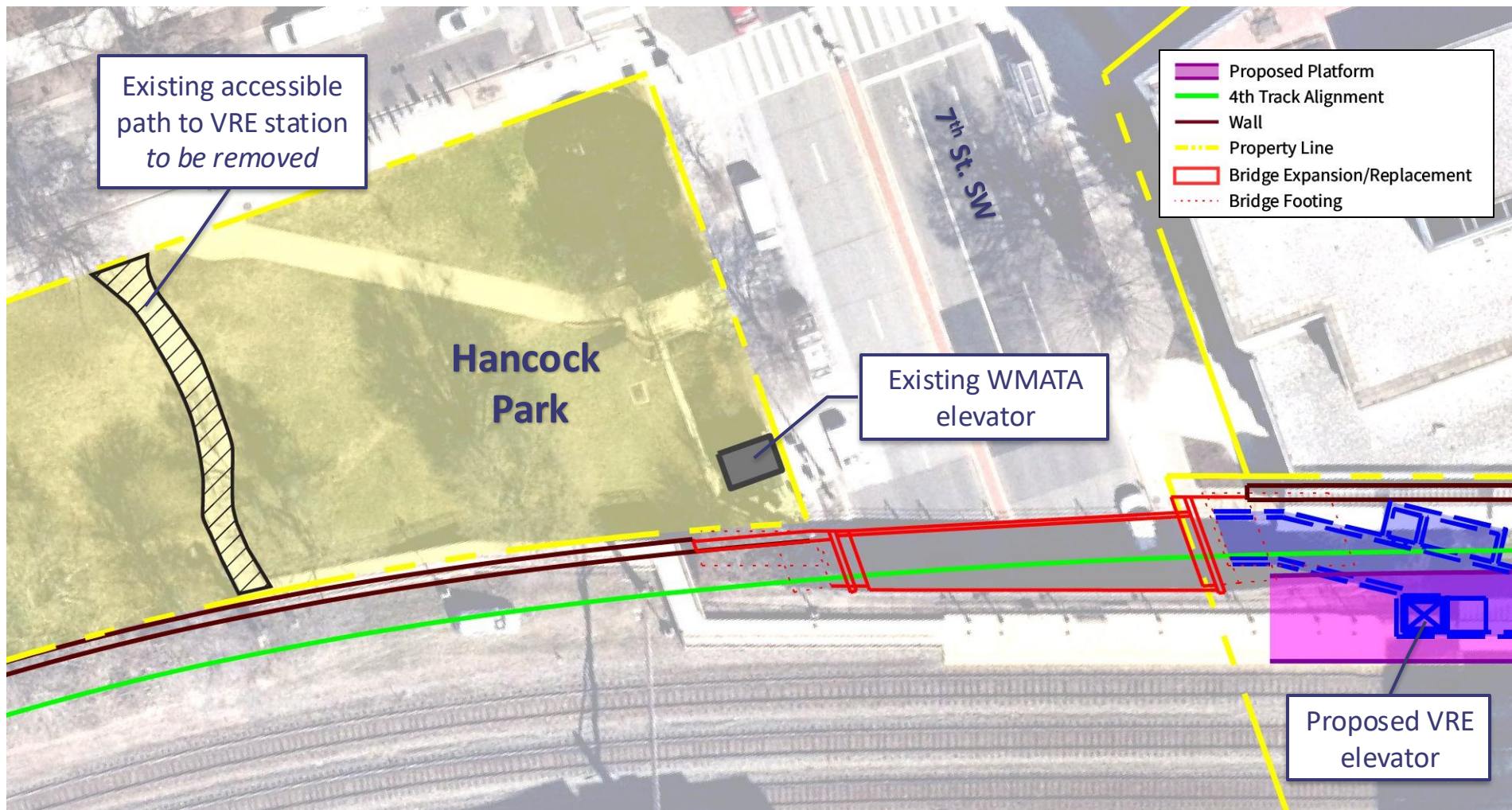


# 7<sup>TH</sup> STREET BRIDGE WIDENING

- Match existing girder configuration
- Shallower girders to provide same vertical clearance over road



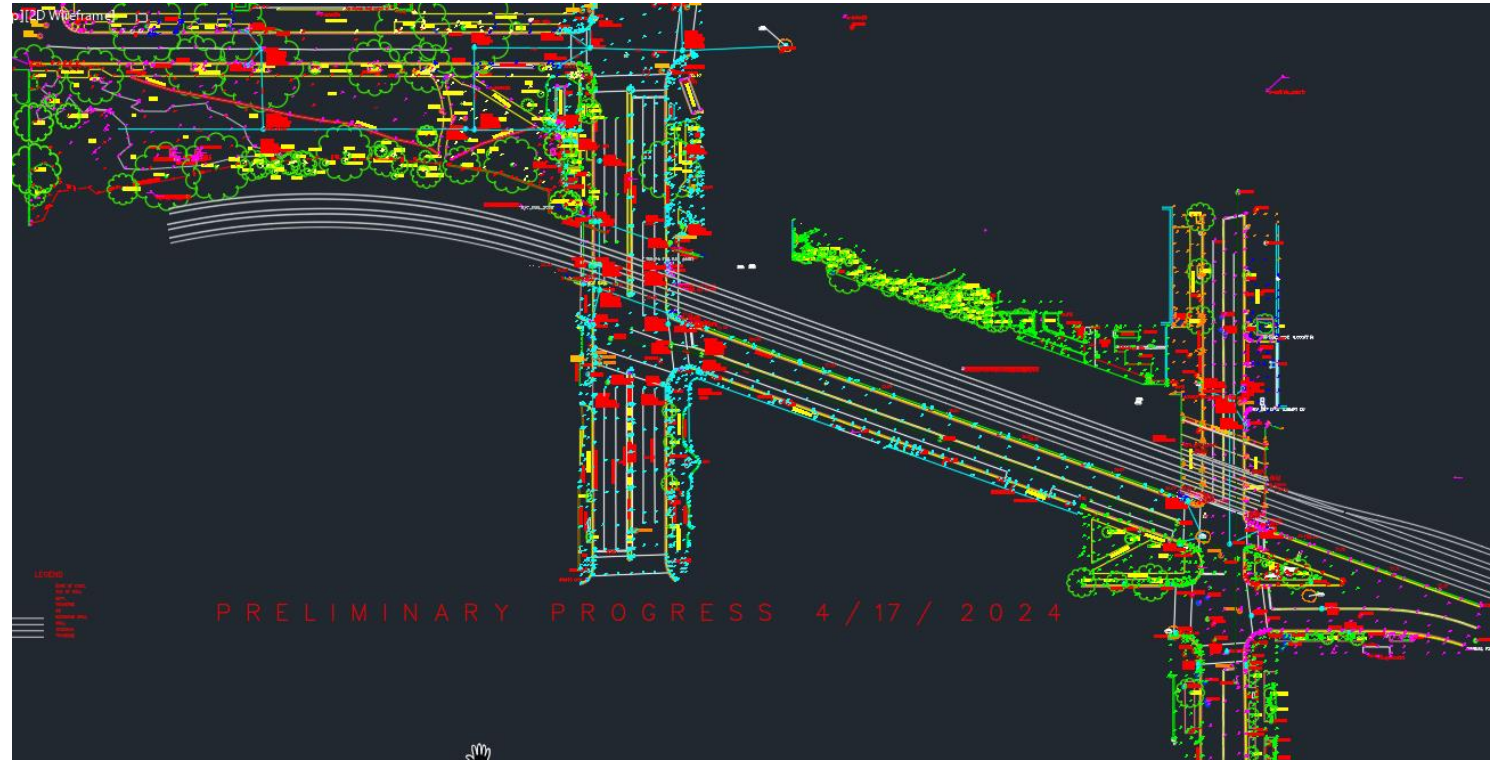
# HANCOCK PARK



*VRE proposes to use Special Use Permits when needed for maintenance access*

# NEXT STEPS FOR PRELIMINARY ENGINEERING

- Complete survey, utility designation, and geotechnical borings
- Refine track, bridge, and platform design details
- Draft 30% plans submission
- Stakeholder reviews
- Comment resolution
- Final 30% plans submittal



# PE/NEPA PROCESS AND SCHEDULE

	Oct-23	Nov-23	Dec-23	Jan-24	Feb-24	Mar-24	Apr-24	May-24	Jun-24	Jul-24	Aug-24	Sep-24	Oct-24	Nov-24	Dec-24	Jan-25	Feb-25	Mar-25	
<b>Preliminary Engineering</b>	Develop Draft 30% Plans				VRE Review	Updates to 30% Plans				Stakeholder Reviews	Stakeholder Comment Resolution	Develop Final 30% Plans			VRE Review/ Backcheck	Submit Final 30% Deliverables			
<b>NEPA</b>		FTA Coordination		FTA and Other Agency Coordination (FRA, NPS, NCPC)		Existing Conditions; Environmental Studies			Draft Documented Categorical Exclusion (DCE)		FTA Review; Revisions	FRA/NPS/ NCPC Review	Comment Resolution + Final Draft NEPA Document	FTA Review; Revisions	FRA/NPS/ NCPC Review	Comment Resolution + Final NEPA Document	Federal Agency Decision		
<b>Section 106</b>	FTA Coordination		Consulting Party Meeting #1										Consulting Party Meeting #2		Consulting Party Meeting #3				
			Develop Draft DOEs		FTA Review/ Revisions	DC SHPO/ CP Review													
			Initiate Section 106 Consultation		Assess Effects			FTA Review/ Revisions	DC SHPO/ CP Review										
					Draft Agreement Document				FTA Review/ Revisions	DC SHPO/ CP Review	Revisions	FTA Review/ Signatory Review	Execute Agreement Document						
<b>CFA Approval</b>									Staff Consultation	Commission Meeting (Info Item)		Staff Consultation	Commission Meeting (Concept Approval)						
<b>Stakeholder Coordination</b>	Working Group Meeting #1				Working Group Meeting #2				Working Group Meeting #3				Working Group Meeting #4		Working Group Meeting #5				
<b>Public Engagement</b>	Outreach Activities										Outreach Activities								

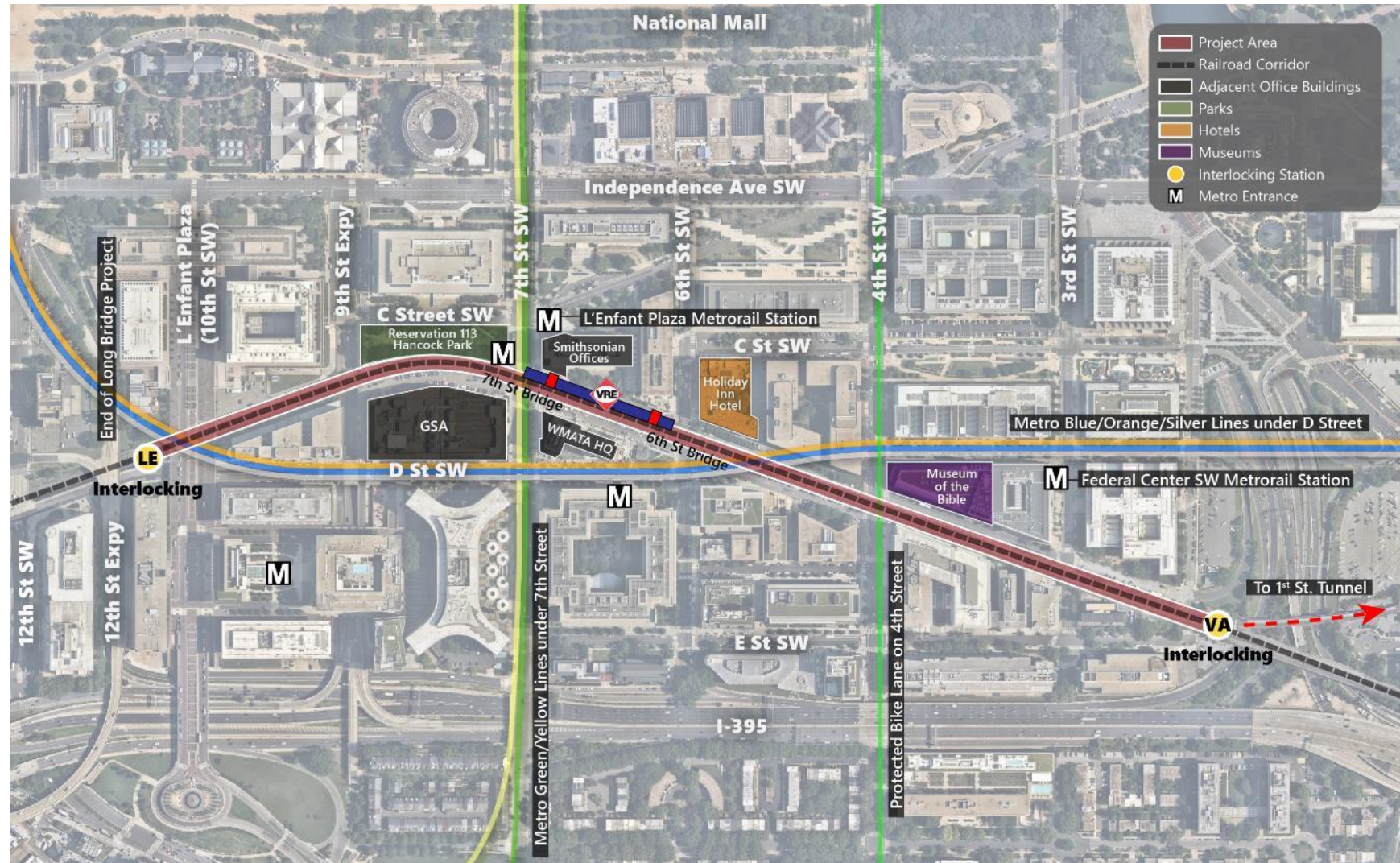
# NEPA – AFFECTED ENVIRONMENT

## Resources Potentially Affected

- Parks and Recreation Areas
- Historic Resources
- Noise & Vibration
- Aesthetics

## Resources Potentially Not Affected

- Land Use
- Air Quality
- Energy



*Analysis will evaluate both permanent impacts and temporary impacts during construction*

# NEPA – AFFECTED ENVIRONMENT

## Other Resources for Discussion

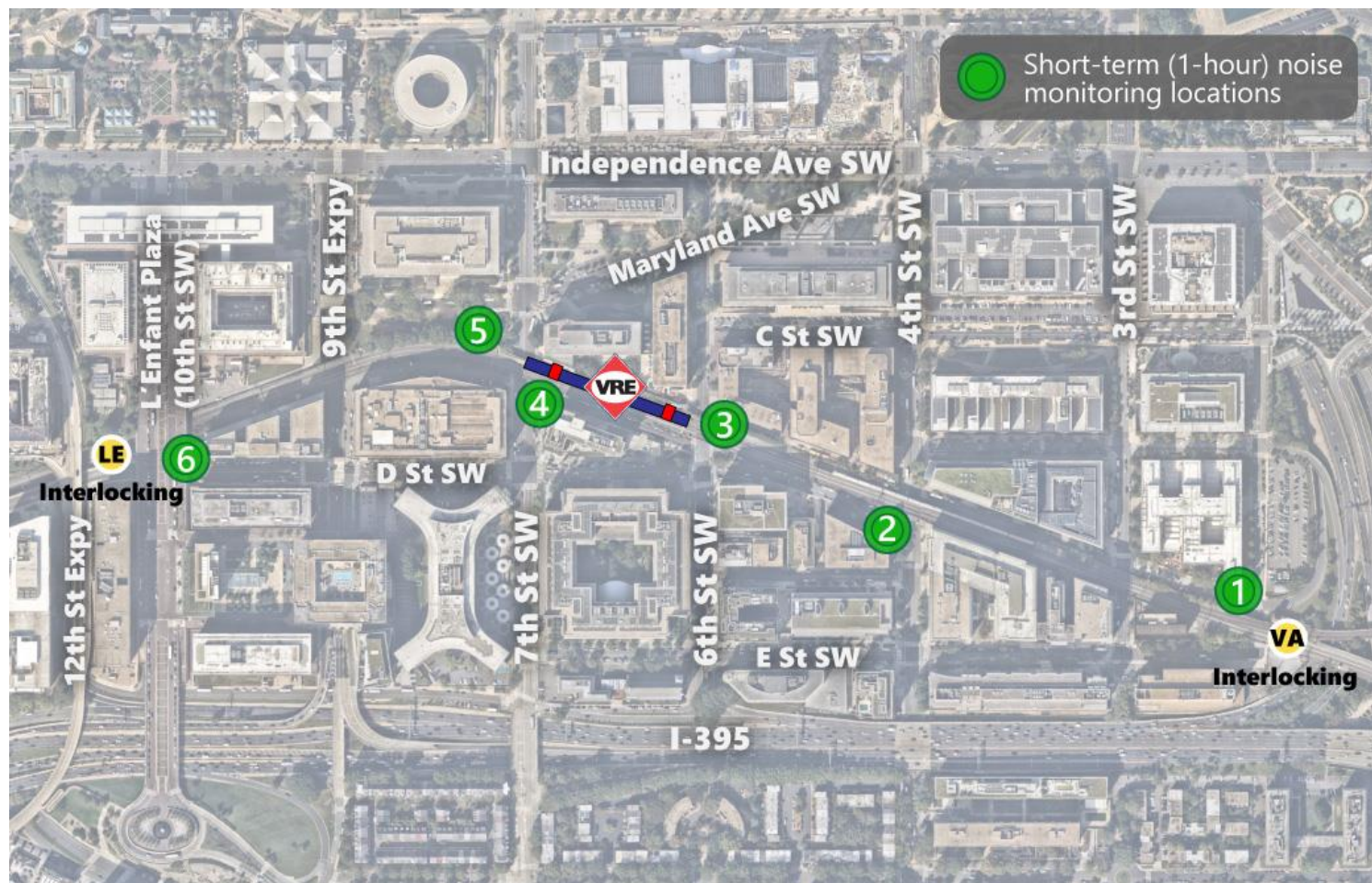
- Water Quality
- Hazardous Materials
- Threatened and Endangered Species
- Environmental Justice
- Indirect and Cumulative Effects

## Resources Not Present

- Coastal Zone
- Navigable Waterways
- Waters of the U.S.
- Floodplains

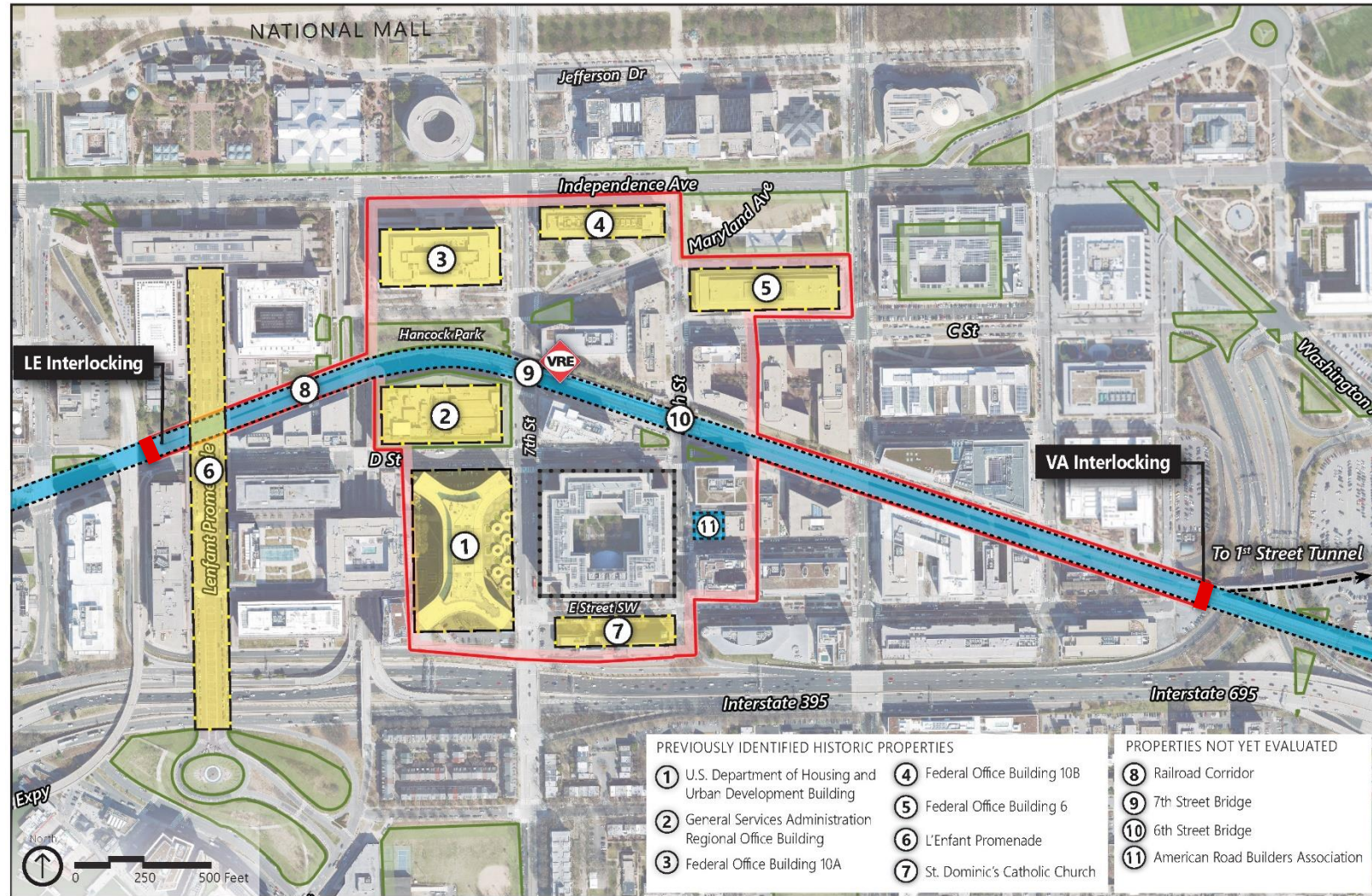
# NOISE & VIBRATION

- 1-hour continuous noise measurements
- Noise monitoring locations with closest noise sensitive receptors:
  - 1 – Ford House Office Building
  - 2 – near Museum of the Bible
  - 3 – Holiday Inn
  - 4 – near Smithsonian Institution reading room
  - 5 – Hancock Park
  - 6 – National Renewable Energy Lab



# SECTION 106

- Identified the proposed APE and historic properties
  - 8 properties listed in or eligible for listing in National Register
  - 4 properties over 45 years old, but not yet evaluated
- Preparing Determinations of Eligibility (DOE)
- Assessment of Effects will be based on 30% design



**LEGEND**

<span style="border: 1px solid red; display: inline-block; width: 15px; height: 10px;"></span>	Area of Potential Effect
<span style="border: 1px solid green; display: inline-block; width: 15px; height: 10px;"></span>	Federal Land Boundary
<span style="border: 1px solid yellow; display: inline-block; width: 15px; height: 10px;"></span>	Listed or Eligible for Listing in the National Register
<span style="border: 1px solid blue; display: inline-block; width: 15px; height: 10px;"></span>	Over 45 Years Old, Not Yet Evaluated
<span style="border: 1px solid black; display: inline-block; width: 15px; height: 10px;"></span>	Ineligible

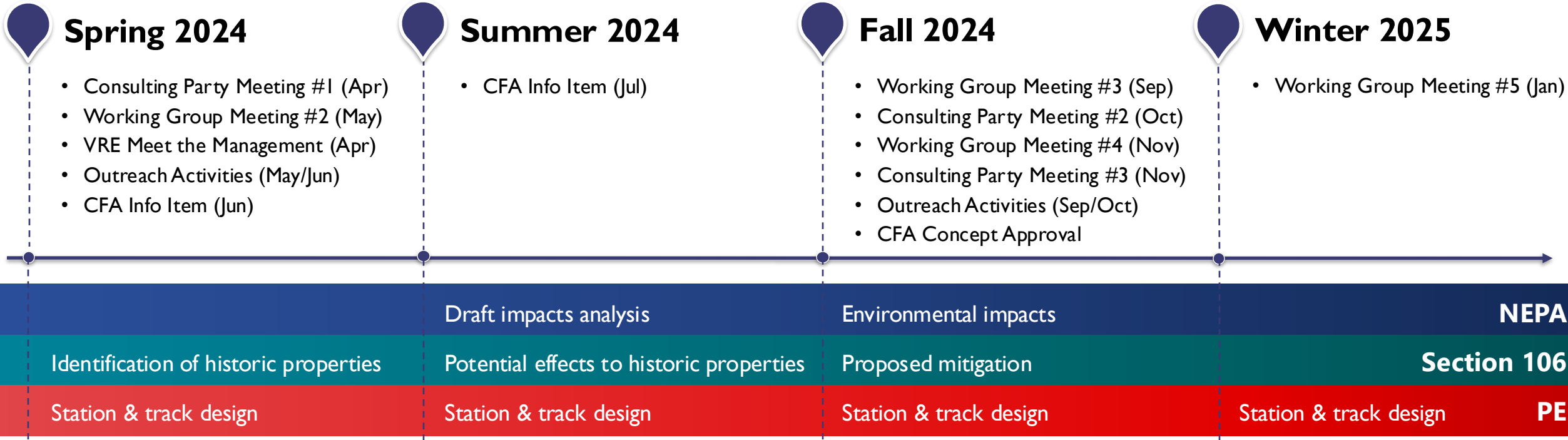
**L'Enfant Track and Station Improvements  
Area of Potential Effect**  
Washington DC

# SECTION 106 CONSULTING PARTIES

Organization	Project Interest
<b>FTA</b>	<b>Lead Federal Agency</b>
<b>DC SHPO</b>	Section 106 Review
<b>CSXT</b>	Rail operator through corridor
<b>Amtrak</b>	Rail operator through corridor
<b>FRA</b>	Funding partner for Transforming Rail in Virginia; Lead Federal Agency for adjacent rail project
<b>VPRA</b>	Project partner through Transforming Rail in Virginia
<b>DDOT</b>	Street and bridge impacts; rail safety; and multimodal connections
<b>NPS – NAMA</b>	Administration of Hancock Park and National Mall
<b>NPS – National Capital Area</b>	Administration of Hancock Park and National Mall

Organization	Project Interest
<b>CFA</b>	Project in jurisdiction for review
<b>NCPC</b>	Federal agency with approval authority for federal construction projects
<b>Committee of 100</b>	Local preservation organization
<b>DC Preservation League</b>	Local preservation organization
<b>GSA – National Capital Region</b>	Property owner
<b>Southwest BID</b>	Non-profit organization for improvements to Southwest DC funded through a self-imposed assessment of commercial property owners
<b>Smithsonian Institution</b>	Property owner
<b>ANC 6D</b>	Non-partisan, neighborhood body for Southwest DC made up of locally elected representatives
<b>NVTC</b>	Co-owner of VRE
<b>PRTC</b>	Co-owner of VRE

# PUBLIC AND STAKEHOLDER ENGAGEMENT





# DISCUSSION

# Thank you for your participation!

Project Website: [VRE L'Enfant Station and Fourth Track](#)

Or via E-Builder: [Previous meeting notes and other project information](#) →



*You are invited to provide comments to VRE about this project by:*

- Emailing: [dshikurye@vre.org](mailto:dshikurye@vre.org)
- Sending US mail to:  
Virginia Railway Express  
Attention: LEF/Dagmawie Shikurye  
1500 King St., Suite 202  
Alexandria, VA 22304