



VIRGINIA RAILWAY EXPRESS L'ENFANT STATION AND FOURTH TRACK



Preliminary Engineering/NEPA Phase
WG Meeting #3:
Coordinating Design and the Environment
November 19, 2024

AGENDA

1. Safety Briefing & Introductions
2. Working Group Meetings
3. Project Recap
4. Draft 30% Design
5. NEPA
6. Section 106
7. Q&A/Feedback

This meeting is being recorded. By participating in this meeting, you agree to the recording.



PROJECT TEAM



Dagmawie Shikurye
Project Manager for PE/NEPA Phase

Christine Hoeffner
Director of Planning and Environmental Policy
Deputy Project Manager for PE/NEPA Phase

Dallas Richards
Chief Engineer



Mark Schnauer
VRE Project Coordination

Naomi Klein
Planning Project Manager

Kate Kurgan
NEPA Coordinator



Mark Colgan
Project Manager

Josh Bendyk
Deputy Project Manager

Lee Farmer
Environmental Lead

Meghan Powell
Stakeholder Lead

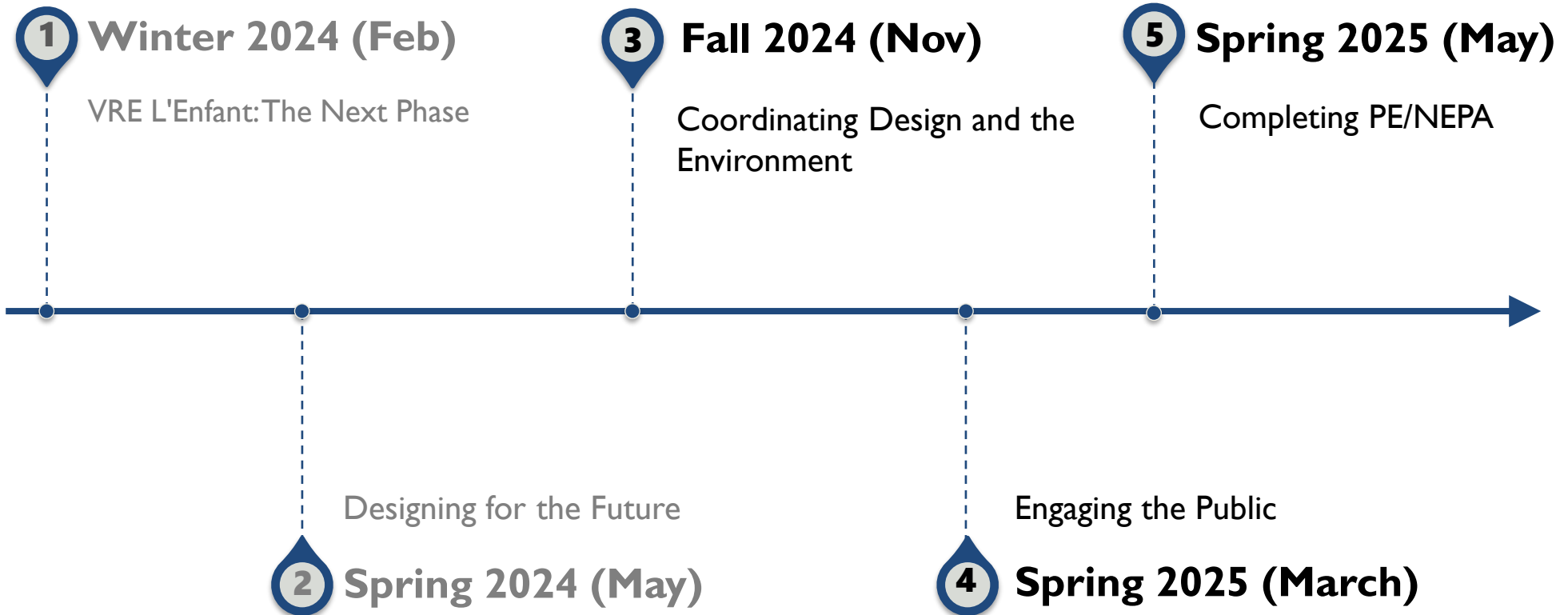
WORKING GROUP MEMBERS

- Advisory Neighborhood Commission (ANC) 6D
- Amtrak
- Commission of Fine Arts (CFA)
- Committee of 100 on the Federal City
- CSXT
- DC Office of Planning (DCOP)
- Virginia Department of Rail and Public Transportation (DRPT)
- District Department of Energy and Environment (DOEE)
- District Department of Transportation (DDOT)
- DC Historic Preservation Office (SHPO)
- Federal City Council
- Federal Railroad Administration (FRA)**
- Federal Transit Administration (FTA)*
- General Services Administration (GSA)
- Greater Washington Partnership (GWP)
- National Capital Planning Commission (NCPC)
- National Park Service (NPS)
- NPS National Mall and Memorial Parks (NAMA)
- Northern Virginia Transportation Commission (NVTC)
- Potomac and Rappahannock Transportation Commission (PRTC)
- Smithsonian Institution
- Southwest Business Improvement District (BID)
- Southwest Neighborhood Assembly (SWNA)
- Washington Metropolitan Area Transit Authority (WMATA)
- Nearby property owners

PURPOSE OF WORKING GROUP MEETINGS

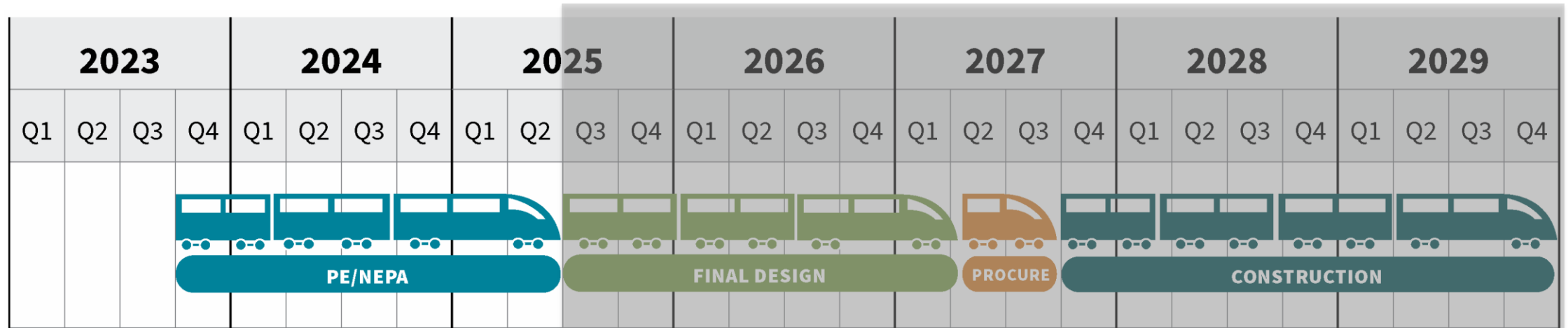
- Purpose: To bring together stakeholders with interests, potential concerns, or oversight related to the VRE L'Enfant Station and Fourth Track project
- Goals:
 - Seek ongoing feedback about designs and potential environmental or cultural/historic impacts
 - Provide updates on project progress
 - Inform and support public engagement efforts

WORKING GROUP MEETINGS

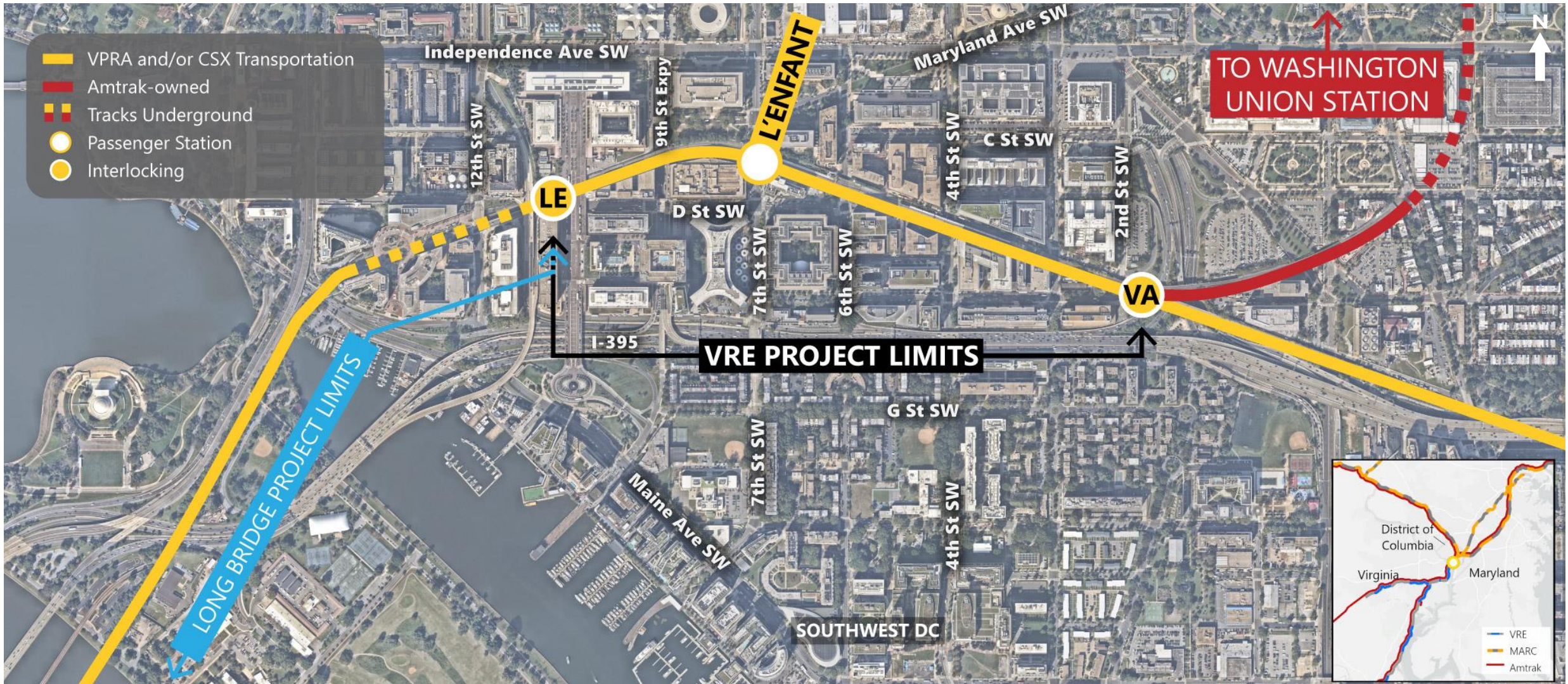


PROJECT TIMELINE

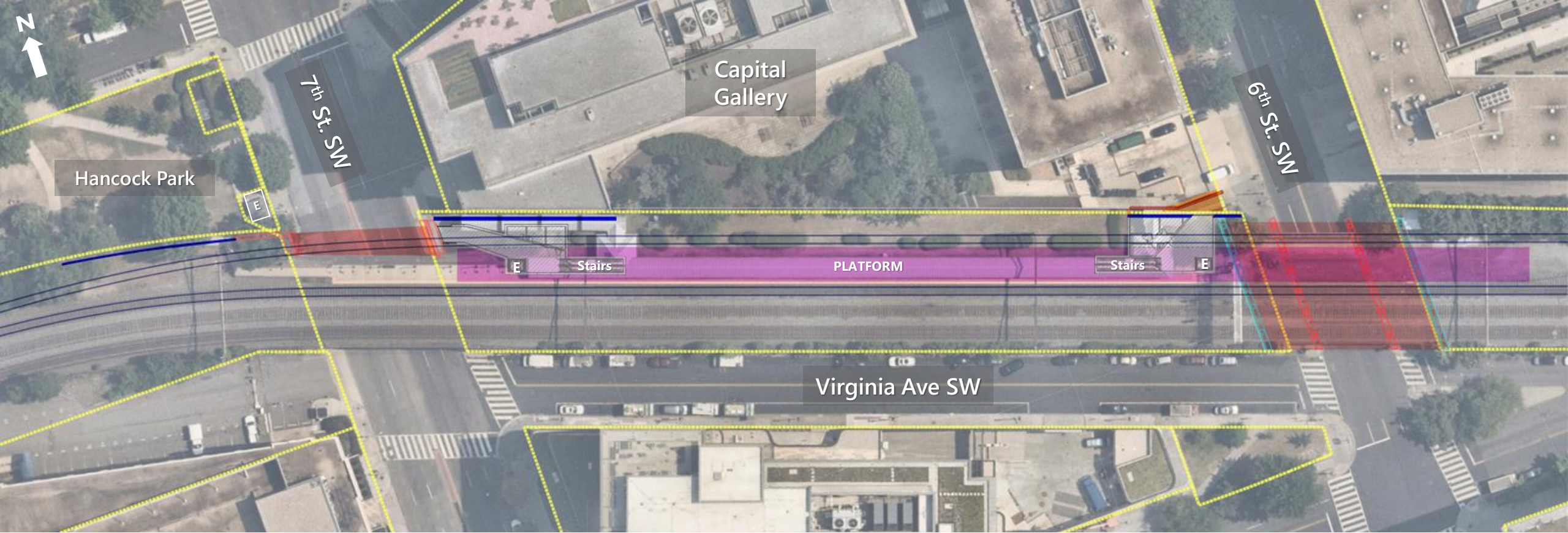
- ✓ Basis of Design
- ✓ South Elevator Feasibility
- ✓ Survey/Utility Mapping
- ✓ Soil Borings
- ✓ Draft 30% Design Drawings
- Final 30% Design Drawings
- NEPA Review
- Section 106 Review



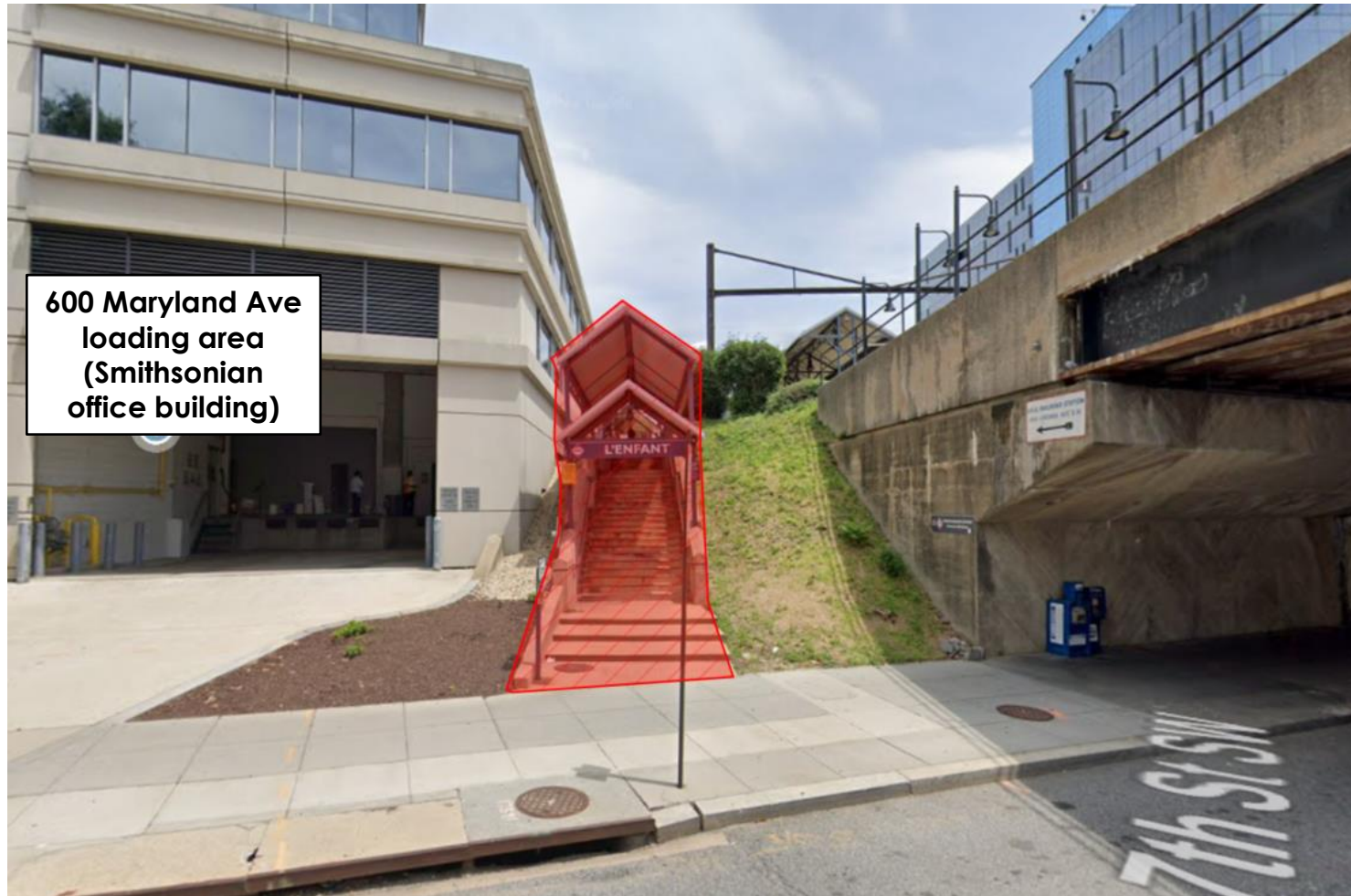
PROJECT LOCATION



DRAFT 30% DESIGN



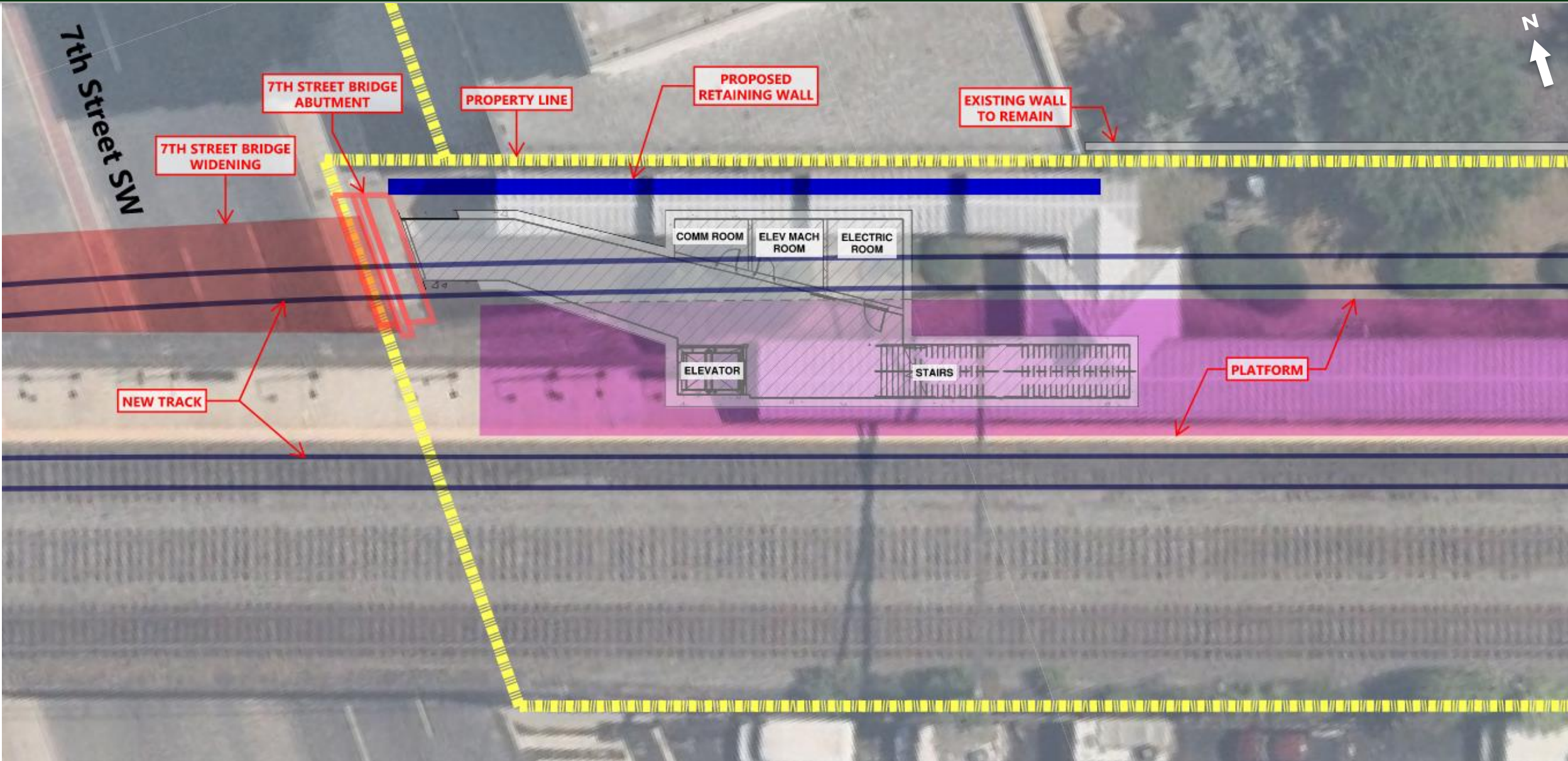
7TH STREET ENTRANCE



- Remove existing stairs
- Minimize temporary impacts to garage entrance
- Install new retaining wall
- Maintain similar offset to building
- Widen bridge
- Build new pedestrian tunnel under Track 4 and stairs/elevator to platform

7TH STREET ENTRANCE





6TH STREET ENTRANCE

- Remove existing entrance
- Temporary construction easements required
- Coordinate impact to adjacent loading dock
- Remove portion of existing retaining wall and corner of stone masonry wingwall

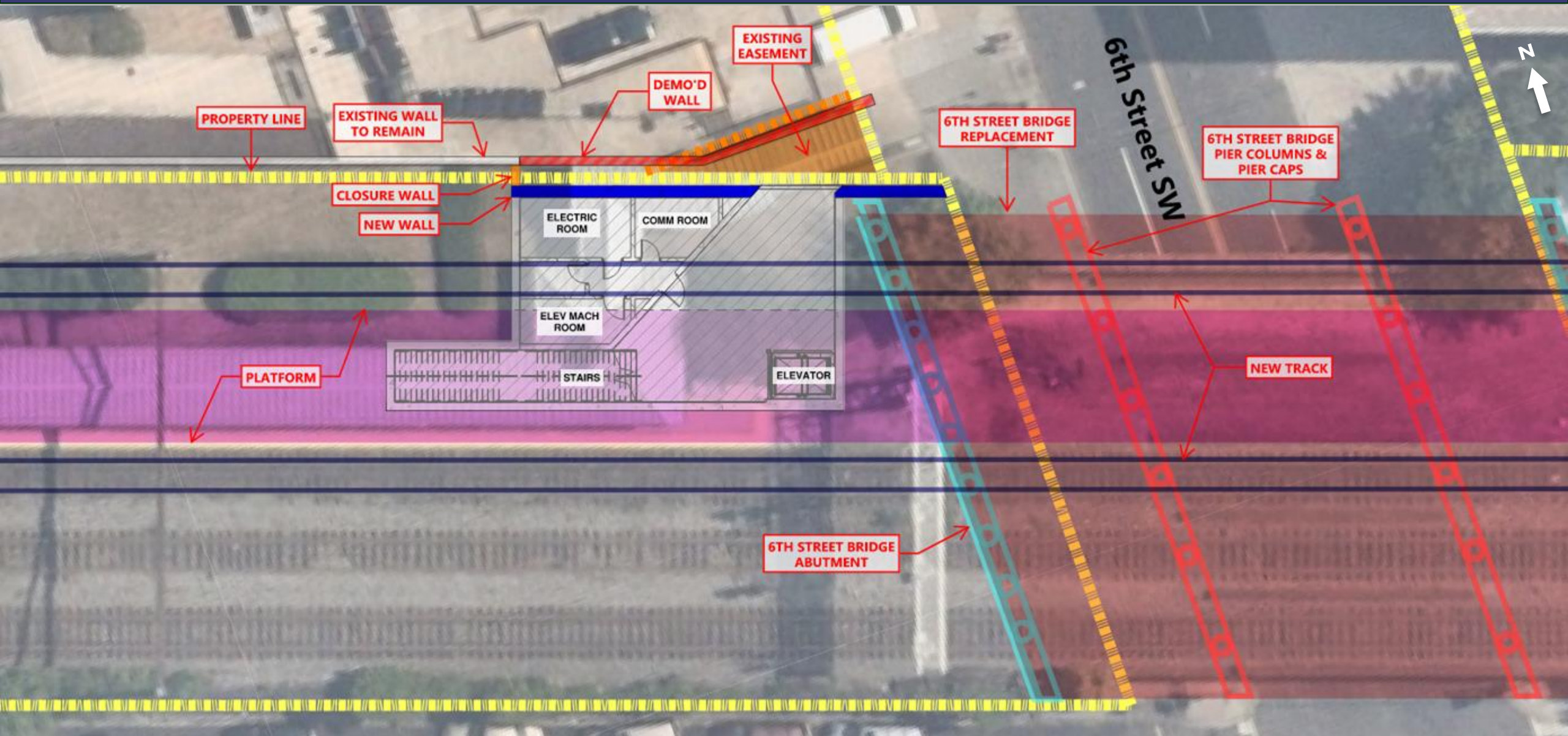


6TH STREET ENTRANCE

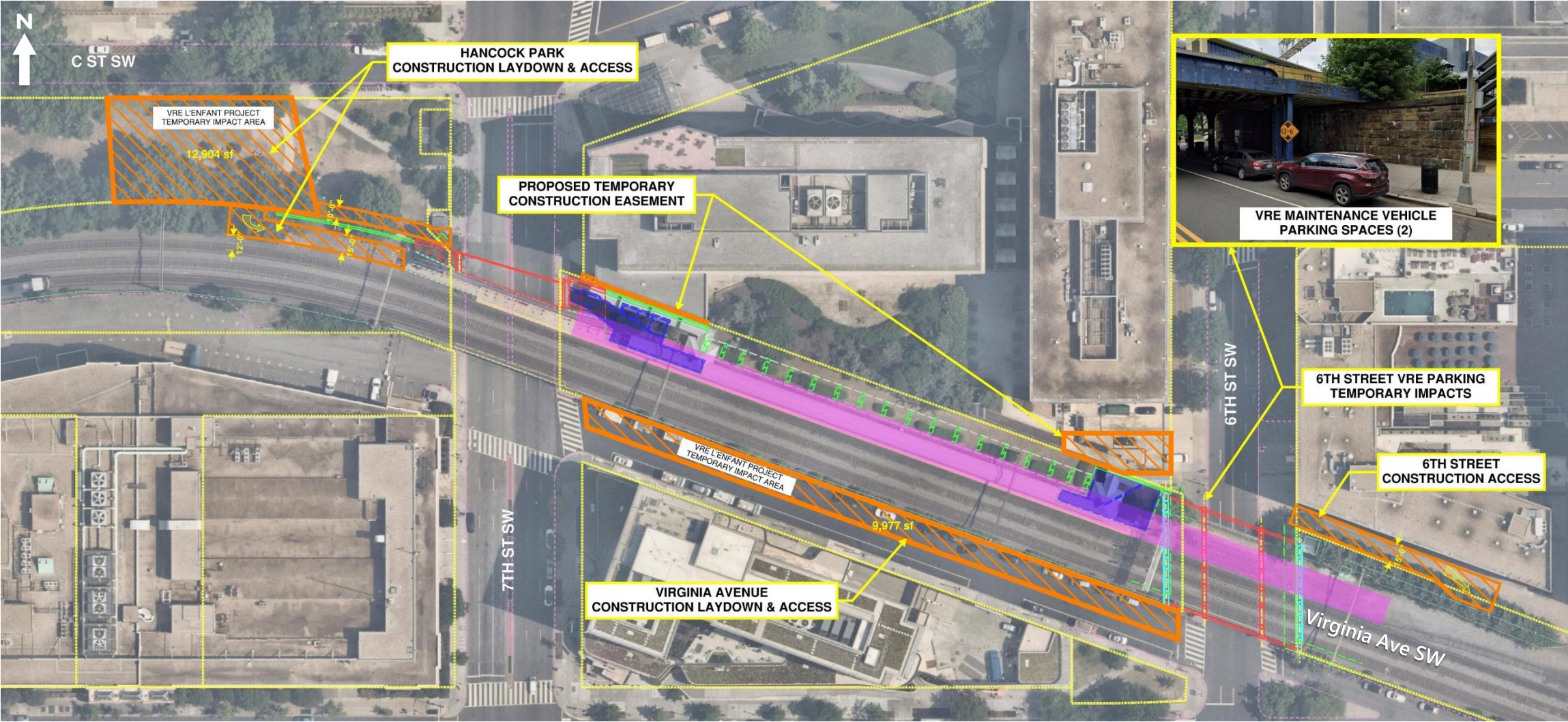


6TH STREET ENTRANCE





ANTICIPATED TEMPORARY IMPACTS

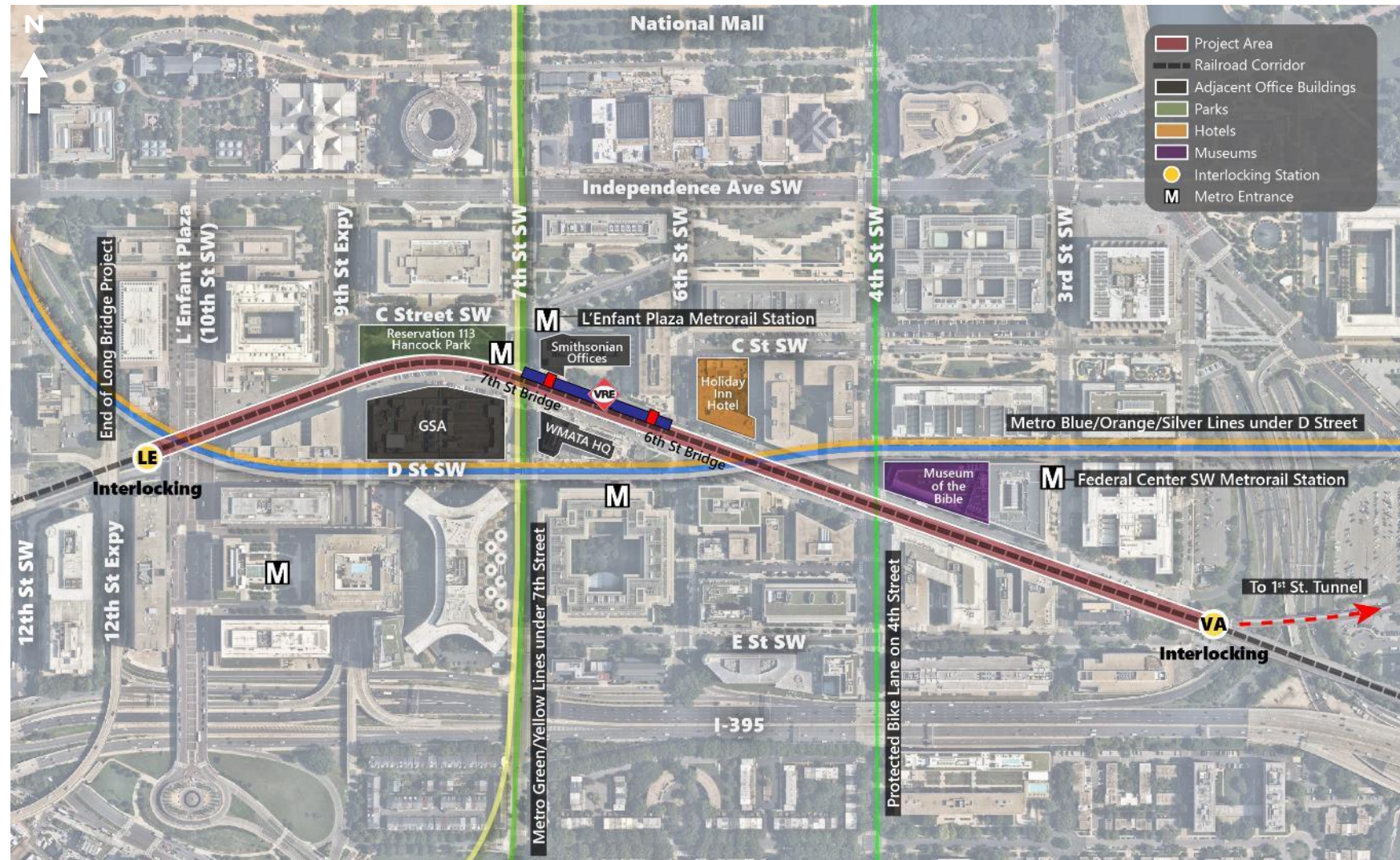


Hatched construction laydown/access area shown on Virginia Avenue SW to be coordinated with DDOT and adjacent property owners/stakeholders, thus limits shown are preliminary with any temporary street closures to be minimized where possible.

NEPA – AFFECTED ENVIRONMENT

Resources Potentially Affected

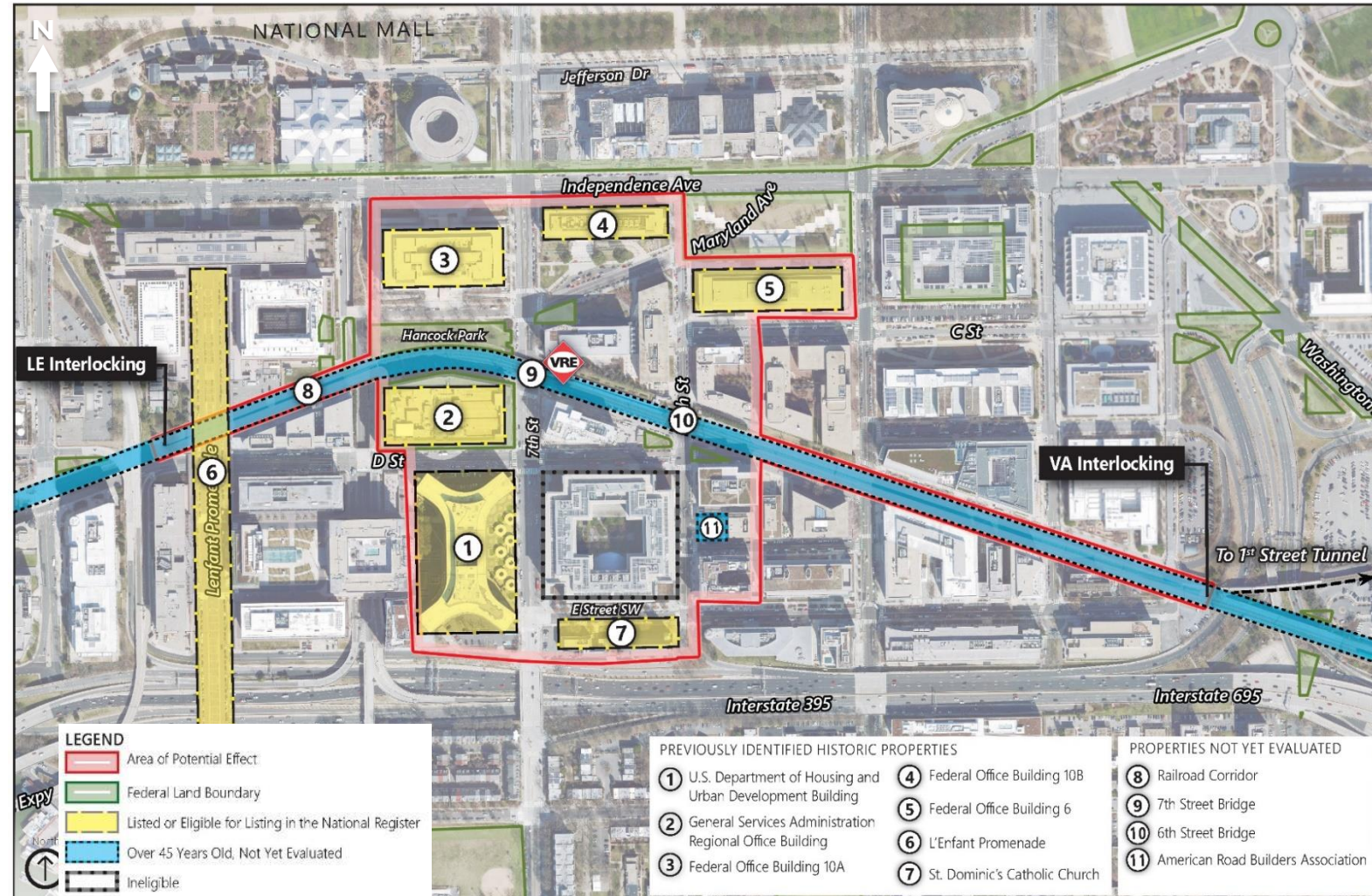
- Noise and Vibration
- Traffic and Transportation
- Historic Resources
- Parks and Recreation Areas
- Aesthetics/Visual Quality



Analysis evaluating both permanent impacts and temporary impacts during construction.

SECTION 106

- Identified proposed APE and historic properties
- Assessment of Effects is based on the Draft 30% design
- Determinations of Eligibility (DOE) with Consulting Parties
- More information should be available for discussion at next Working Group meeting



PE/NEPA PROCESS AND SCHEDULE

| Activity | Sep-24 | Oct-24 | Nov-24 | Dec-24 | Jan-25 | Feb-25 | Mar-25 | Apr-25 | May-25 | | | | |
|---------------------------------|--|---------------------|--------------------------------|--------------------------|----------------|---------------------|--------------------------------|-------------------|-----------|--------------------------|----------------------------|---------------------|-------------------------|
| Preliminary Engineering | Updates to 30% Plans | Stakeholder Reviews | Stakeholder Comment Resolution | Develop Final 30% Plans | | | Submit Final 30% Deliverables | | | | | | |
| NEPA | Draft Documented Categorical Exclusion (DCE) | | VRE/VPRA/FTA Review | Revisions | NPS Review | Comment Resolution | Final Draft NEPA Document | FTA Review | Revisions | NPS Review | Comment Resolution | Final NEPA Document | Federal Agency Decision |
| Section 106 | Consulting Party Meeting #2 | | | | | | Consulting Party Meeting #3 | | | | | | |
| | Develop Draft DOEs | | FTA Review | DC SHPO/CP Review | | | | | | | | | |
| | | Assess Effects | | VRE/VPRA/FTA Review | Revisions | DC SHPO/CP Review | | | | | | | |
| | | | | Draft Agreement Document | | | VRE/VPRA/FTA Review; Revisions | DC SHPO/CP Review | Revisions | Signatory Review | Execute Agreement Document | | |
| CFA/NCPC Approval | Staff Consultation | | | Staff Consultation | | Commission Meetings | | | | | | | |
| Stakeholder Coordination | Working Group Meeting #3 | | | | | | Working Group Meeting #4 | | | Working Group Meeting #5 | | | |
| Public Engagement | Outreach Activities | | | | Public Meeting | | | | | | | | |



QUESTIONS AND FEEDBACK

Thank you for your participation!

Project Website: [VRE L'Enfant Station and Fourth Track](#) →



Project Information: [Previous meeting notes and other project information](#)

You are invited to provide comments to VRE about this project by:

- Emailing: dshikurye@vre.org
- Sending US mail to:
Virginia Railway Express
Attention: LEF/Dagmawie Shikurye
1500 King St., Suite 202
Alexandria, VA 22304