

# CEO REPORT

APRIL 2024



# OUR MISSION

The Virginia Railway Express, a joint project of the Northern Virginia Transportation Commission and the Potomac Rappahannock Transportation Commission, will provide safe, cost-effective, accessible, reliable, convenient, and customer responsive commuter-oriented rail passenger service. VRE contributes to the economic vitality of its member jurisdictions as an integral part of a balanced, intermodal regional transportation system.



# TABLE OF CONTENTS

CEO REPORT | APRIL 2024

## TABLE OF CONTENTS

**PERFORMANCE AT A GLANCE ..... 3**

**ON-TIME PERFORMANCE ..... 4**

**AVERAGE DAILY RIDERSHIP ..... 6**

**SUMMONSES ISSUED ..... 7**

**TRAIN UTILIZATION ..... 8**

**PARKING UTILIZATION ..... 9**

**FACILITIES UPDATE ..... 10**

**UPCOMING PROCUREMENTS ..... 11**

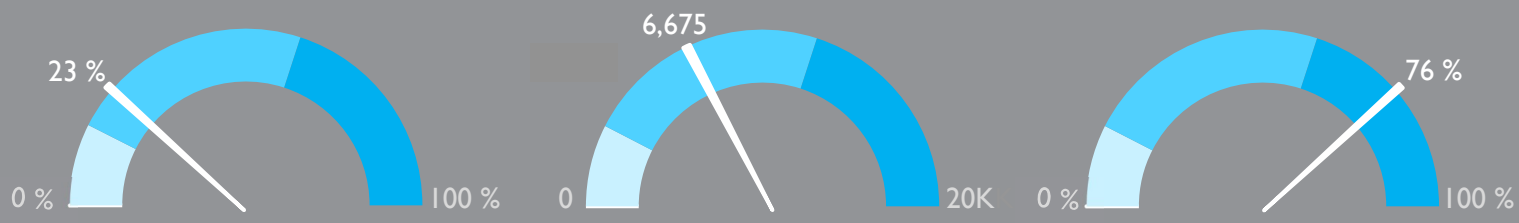
**CAPITAL PROJECTS UPDATES ..... 12**



VIRGINIA RAILWAY EXPRESS  
A better way. A better life.



# PERFORMANCE AT A GLANCE



**PARKING UTILIZATION**

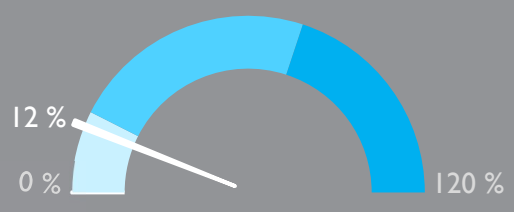
The total number of parking spaces used in the VRE system during the month, divided by the total number of parking spaces available.

**AVERAGE DAILY RIDERSHIP**

The average number of boardings each operating day inclusive of Amtrak Step-Up boardings and reduced, "S" schedule, service.  
Same month, previous year: 6,365

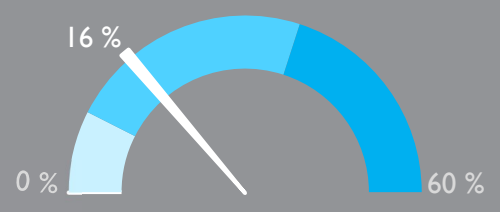
**ON-TIME PERFORMANCE**

Percent of trains arriving at their destination within 5 minutes of the schedule.  
Same month, previous year: 79%



**SYSTEM CAPACITY**

The percentage of peak hour train seats occupied. The calculation excludes reverse flow and non-peak hour trains.



**OPERATING RATIO**  
*Through February 2024*

Year-to-date operating revenues divided by year-to-date operating expenses, which represents the share of operating costs paid by the riders.

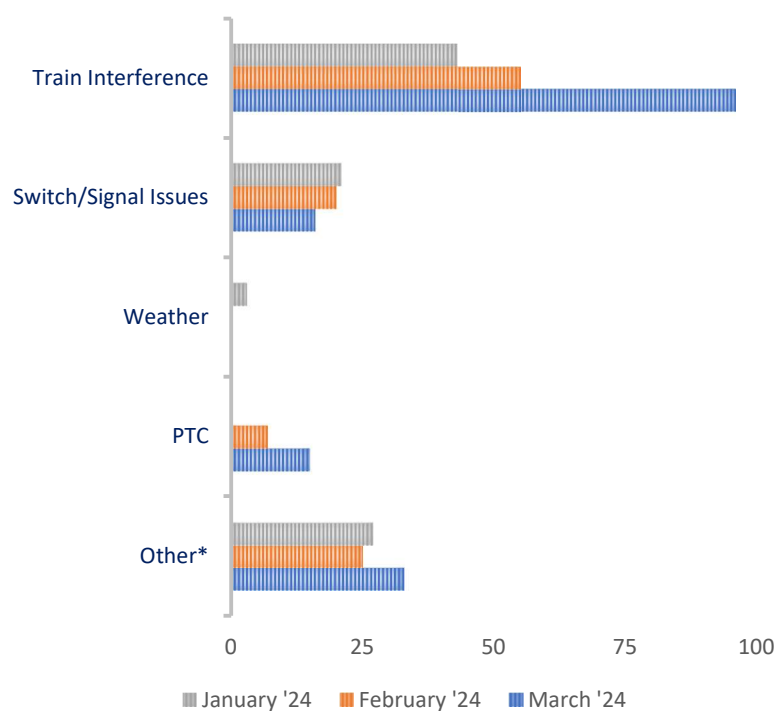
**March 2024**

# ON-TIME PERFORMANCE

## OUR RECORD

	March 2024	February 2024	March 2023
Manassas Line	75%	83%	85%
Fredericksburg Line	77%	84%	72%
Systemwide	76%	83%	79%

## PRIMARY REASON FOR DELAY



VRE operated 670 trains in March. The on-time rate for the month was 76 percent.

One-hundred sixty trains arrived more than 5 minutes late to their final destinations. Of those late trains, 82 were on the Manassas Line (51 percent), and 78 were on the Fredericksburg Line (49 percent). The average delay was 16 minutes. Ten trains were more than 30 minutes late to their destination station.

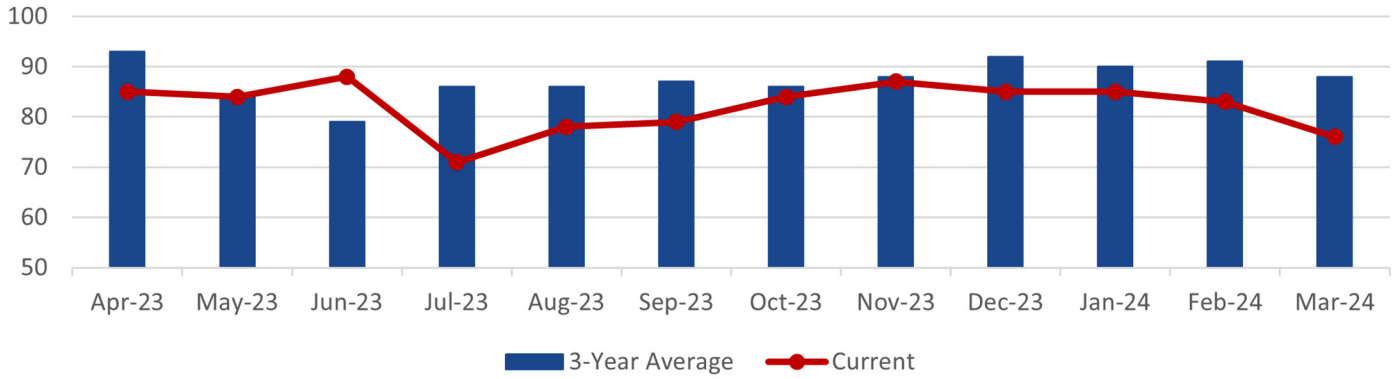
\*Includes trains that were delayed due to operational testing and passenger handling.

## LATE TRAINS

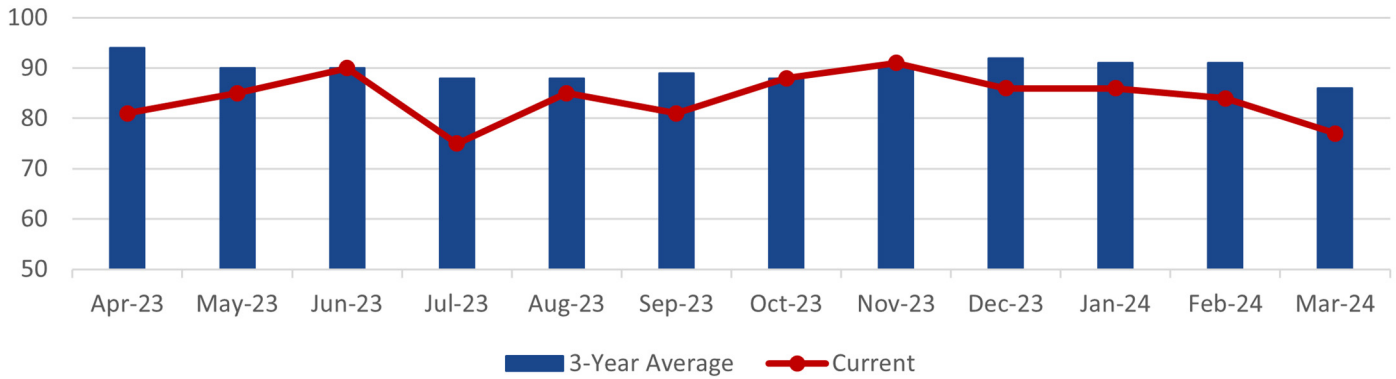
	System Wide			Fredericksburg Line			Manassas Line		
	Jan.	Feb.	Mar.	Jan.	Feb.	Mar.	Jan.	Feb.	Mar.
Total late trains	94	107	160	44	52	78	50	55	82
Average minutes late	17	20	16	14	26	18	19	16	16
Number over 30 minutes	12	19	10	3	14	6	9	5	10
Heat restrictions	0	0	0	0	0	0	0	0	0

# ON-TIME PERFORMANCE

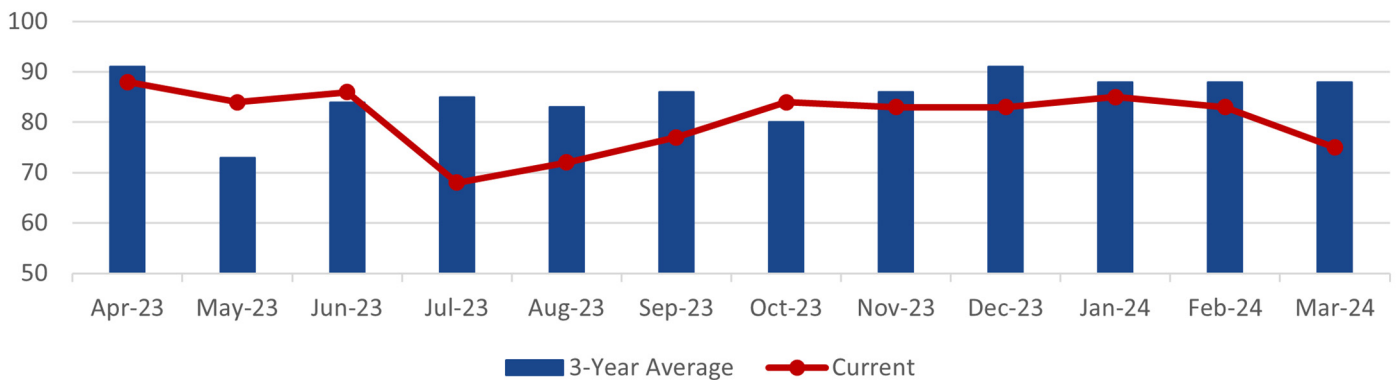
## VRE SYSTEM



## FREDERICKSBURG LINE

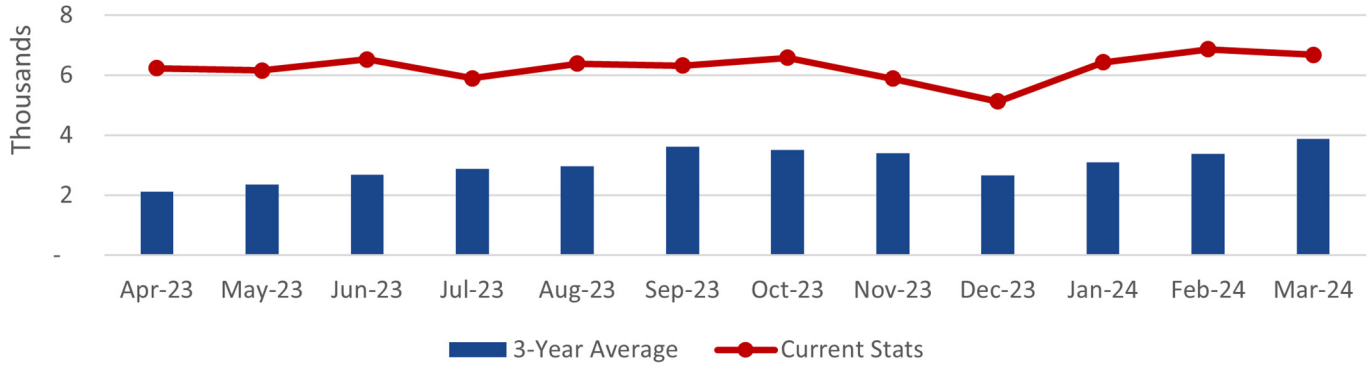


## MANASSAS LINE

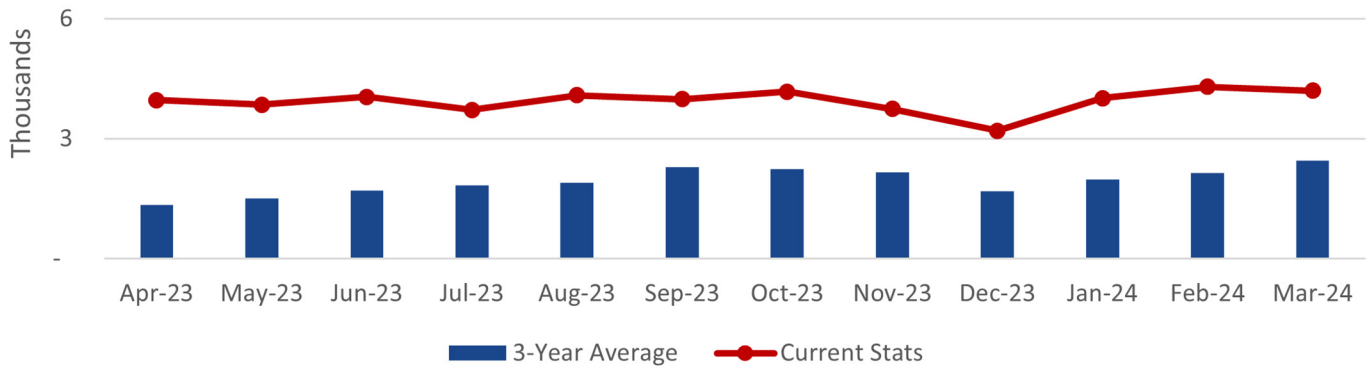


# AVERAGE DAILY RIDERSHIP

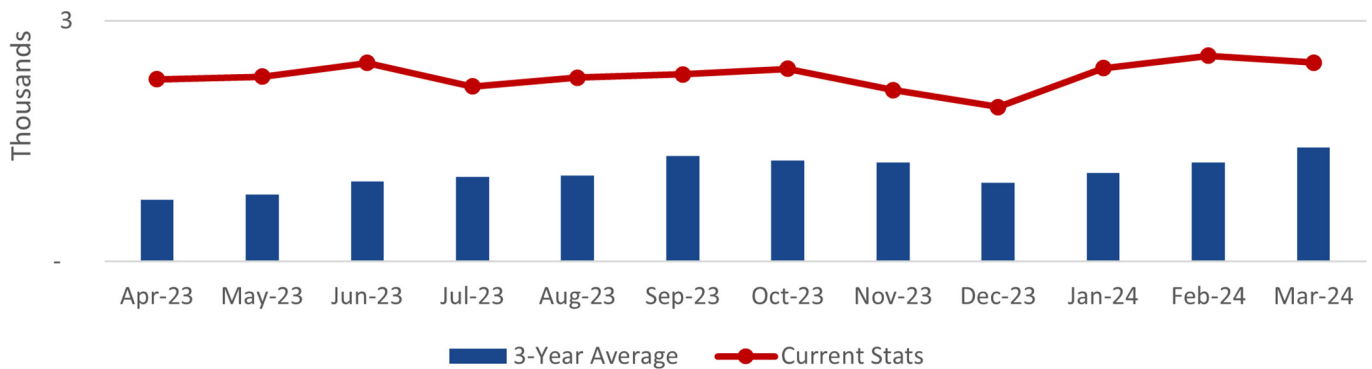
## VRE SYSTEM



## FREDERICKSBURG LINE



## MANASSAS LINE



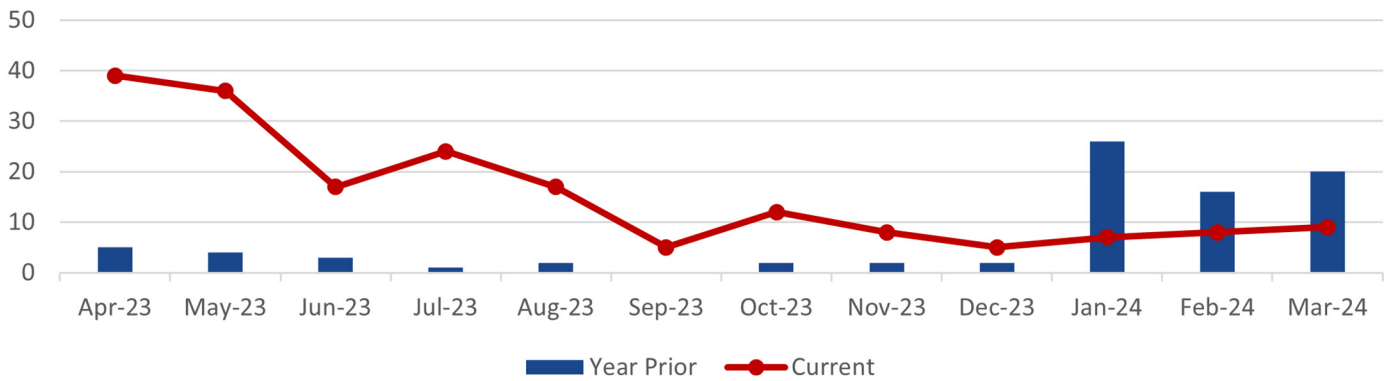
## RIDERSHIP UPDATES

Average daily ridership for March was 6,675. There were 21 service days.

	March 2024	February 2024	March 2023
Monthly Ridership	140,182	137,284	146,391
Average Daily Ridership	6,675	6,864	6,365
Bicycles on Trains	1,096	1,183	1,431
Full Service Days	21	20	23
“S” Service Days	0	0	0

## SUMMONSES ISSUED

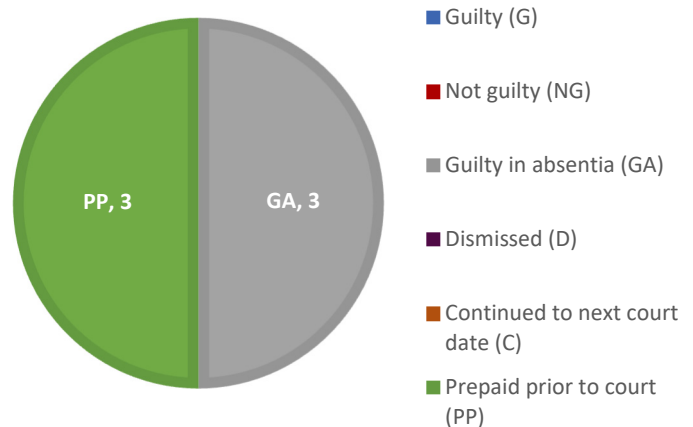
### VRE SYSTEM



### SUMMONSES WAIVED OUTSIDE OF COURT

Reason for Dismissal	Occurrences
Passenger showed proof of a monthly ticket	0
One-time courtesy	1
Per the request of the conductor	3
Defective ticket	0
Per ops manager	0
Unique circumstances	0
Insufficient information	0
Lost and found ticket	0
Other	0
<b>Total Waived</b>	<b>4</b>

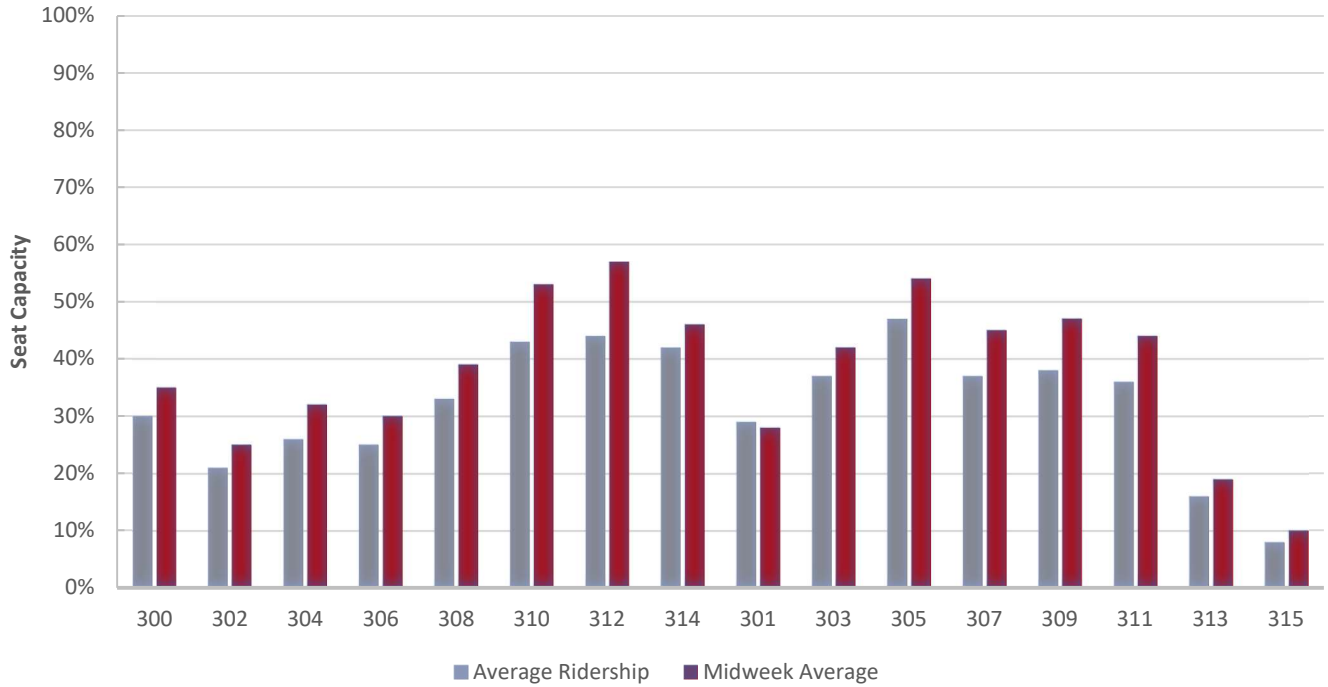
### MONTHLY SUMMONSES COURT ACTION



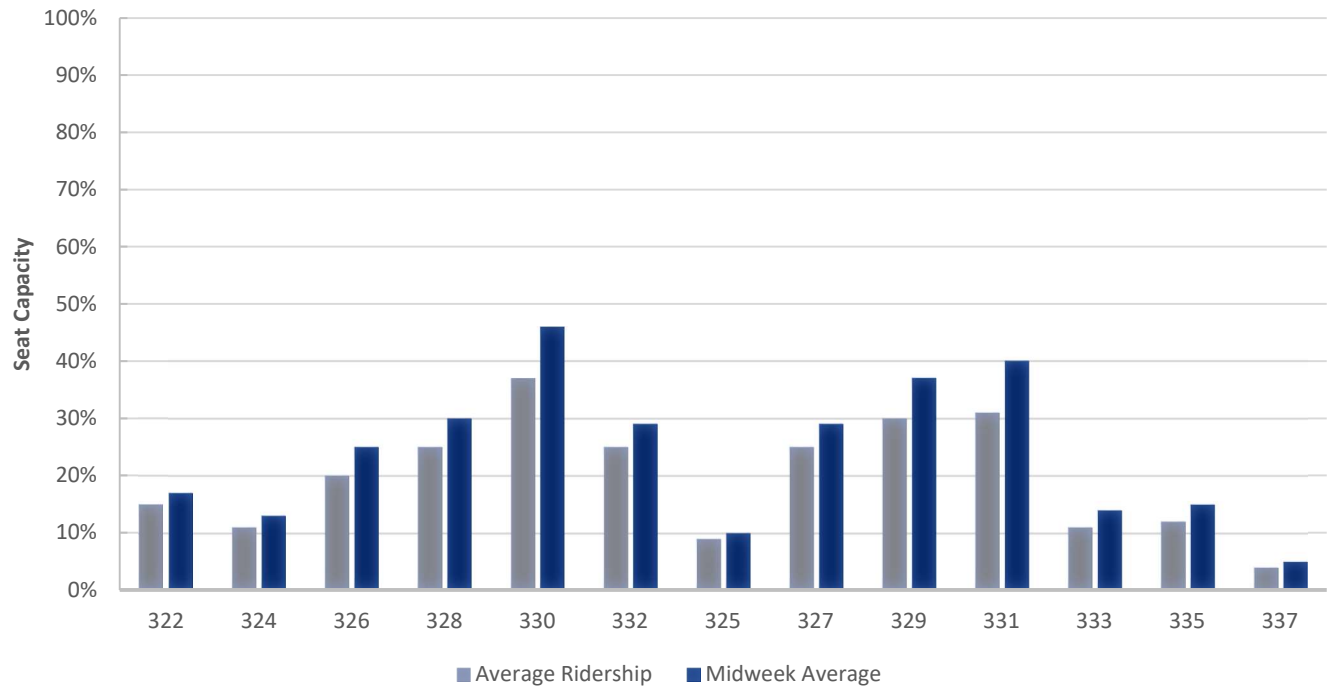


# TRAIN UTILIZATION

## FREDERICKSBURG LINE

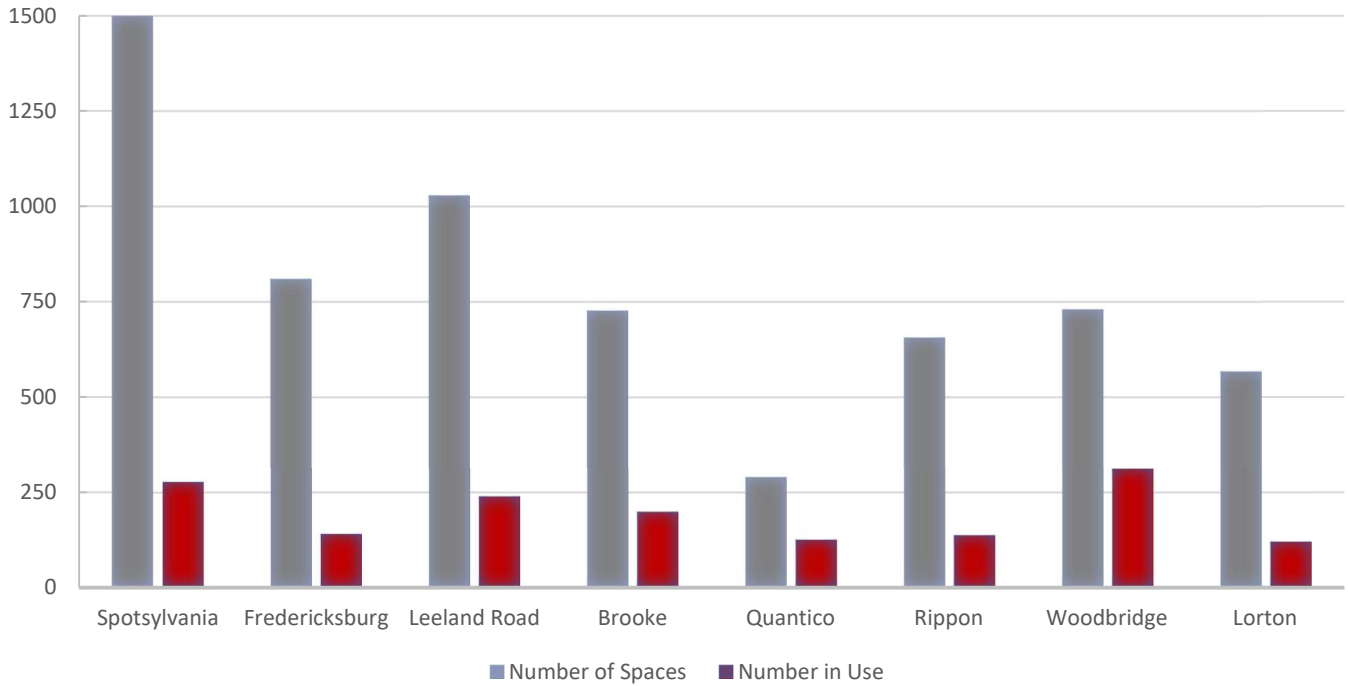


## MANASSAS LINE

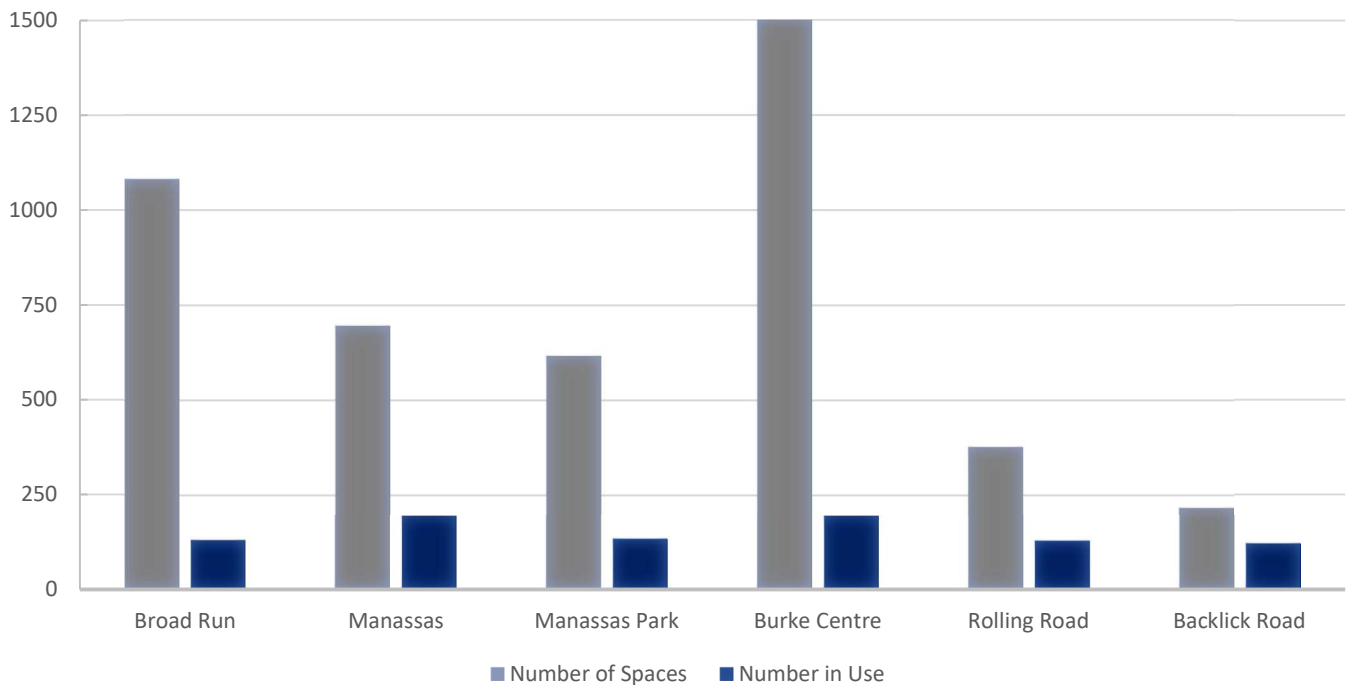


# PARKING UTILIZATION

## FREDERICKSBURG LINE



## MANASSAS LINE



# FACILITIES UPDATE

The following is a status update of VRE facilities projects.

Completed projects:

1. Replacement of broken glass panel on pedestrian bridge at Woodbridge station
2. Replacement of elevator machine room HVAC unit at Rippon station
3. Installation of temporary timber pedestrian crossing to accommodate new Track 3 Potomac Avenue grade crossing at Quantico station
4. Improvements to drainage system at Backlick Road station



*Temporary timber pedestrian crossing at the Quantico station.*



*Fredericksburg station ADA parking lot (before upcoming improvements)*

Projects scheduled to be completed this quarter:

1. Minor repairs to concrete platform at Lorton station
2. Replacement of stair tower and pedestrian bridge logo signs at Woodbridge station
3. Replacement of drainage outfall riprap at Woodbridge station
4. Repairs to electrical conduits at Brooke station
5. Replacement of parking lot LED light fixtures at Spotsylvania station
6. Replacement of concrete drainage flume at Manassas Park station
7. Replacement/installation of pathfinder signage for multiple stations

Projects scheduled to be initiated this quarter:

1. Minor repairs to concrete platform at Alexandria station
2. Replacement of LED lighting at Woodbridge station parking garage
3. Painting of Woodbridge station and parking garage
4. Replacement of windscreen panels at Lorton, Woodbridge and Leeland Road stations
5. Painting of warehouse and crew building exteriors at Crossroads MASF
6. Replacement of existing lighting with LED lighting at Manassas station parking garage
7. Repairs to steel railings at Burke Centre and Manassas Park stations
8. Installation of electric meter for two-way radio antenna system in Old Town Alexandria

APRIL 2024

Ongoing projects:

1. Modernization of east elevator at Woodbridge station
2. Improvements to various elements of Quantico station
3. Improvements to various elements of Fredericksburg station
4. Improvements to various elements of Manassas Park station
5. Replacement of parking lot entrance signs at various stations

## UPCOMING PROCUREMENTS

1. Locomotive AR-10 parts
2. State government relations services
3. Window gaskets for VRE railcars
4. Modernization of Woodbridge Station east elevator
5. Construction of Alexandria Station improvements
6. Broad Run and Crossroads security camera system power and network infrastructure upgrade
7. Locomotive master controllers
8. Passenger information and messaging system
9. Locomotive exterior painting services
10. Construction management services for the Crystal City Station improvements project
11. Construction management services for the Franconia-Springfield Station improvements project

## CAPITAL PROJECTS UPDATE

Project Name	Project Description	Current Phase	Budget	Project Notes
Alexandria Station Improvements	Passenger safety will be improved by replacing an at-grade pedestrian track crossing with elevators to connect the two platforms. The elevators and the current and proposed stairs, will connect to the existing tunnel between the two platforms. Adjustments to platform elevation will eliminate the need for step-boxes to access VRE and Amtrak trains. The center platform will be widened and lengthened to accommodate trains on both tracks.	Final Design	\$ 37,288,433.00	VRE is progressing with resolution of comments on 90% station design and unification with King and Commonwealth bridge designs. (Apr) VRE is working to resolve comments in coordination with Alexandria 4th Track and King and Commonwealth Bridge designs. (Mar)
Broad Run Expansion	To accommodate forecasted ridership growth and increase service reliability, improvements are needed at both the Maintenance and Storage Facility (MSF) and station. An enlarged MSF can store longer trains and additional equipment. That requires shifting the existing platform and adding a pedestrian tunnel between the platform and existing and proposed parking lots. A second, 600-space lot and third main track will be constructed.	Final Design	\$ 139,381,862.00	Updating exhibits and design elements based on prior discussions related to property acquisition. (Apr) Met with Prince William County Staff on 3/5/24 to review project updates and discuss property needs. (Mar)
Brooke Station Improvements	Design and construction of a platform extension up to 700 feet to accommodate full-length VRE trains.	Development	\$ 9,461,455.00	VRE has reengaged this project and returned it to the CIP budget for future years. Project schedule updates pending input from various stakeholders. (Apr)
Crossroads MSF Employee Parking	Design and construction of a permanent employee parking lot at VRE Crossroads Yard.	Final Design	\$ 7,365,765.00	Resubmission of special use permit package is imminent as review comments have been addressed. (Apr) Met with county technical review committee on 2/22/24 for special use permit application. Addressing comments and will resubmit. (Mar)
Crystal City Station Improvements	Improved station access and service reliability will result from a new station. The platform at the relocated station will allow for the simultaneous boarding of two full-length trains. The station's design will accommodate a future pedestrian/bicycle connection between the station and the airport.	Development	\$ 68,900,900.00	Revised 60% design shared with CSXT, VPRRA and Amtrak for review on 3/25/24. Design advancing to 90% while review is performed. (Apr) Revised 60% design incorporating south entrance stairwell and mezzanine to be delivered 3/19/24. (Mar)

- continued next page -

## CAPITAL PROJECTS UPDATE

Project Name	Project Description	Current Phase	Budget	Project Notes
Alexandria Station Improvements	Passenger safety will be improved by replacing an at-grade pedestrian track crossing with elevators to connect the two platforms. The elevators and the current and proposed stairs, will connect to the existing tunnel between the two platforms. Adjustments to platform elevation will eliminate the need for step-boxes to access VRE and Amtrak trains. The center platform will be widened and lengthened to accommodate trains on both tracks.	Final Design	\$ 37,288,433.00	VRE is progressing with resolution of comments on 90% station design and unification with King and Commonwealth bridge designs. (Apr) VRE is working to resolve comments in coordination with Alexandria 4th Track and King and Commonwealth Bridge designs. (Mar)
Broad Run Expansion	To accommodate forecasted ridership growth and increase service reliability, improvements are needed at both the Maintenance and Storage Facility (MSF) and station. An enlarged MSF can store longer trains and additional equipment. That requires shifting the existing platform and adding a pedestrian tunnel between the platform and existing and proposed parking lots. A second, 600-space lot and third main track will be constructed.	Final Design	\$ 139,381,862.00	Updating exhibits and design elements based on prior discussions related to property acquisition. (Apr) Met with Prince William County Staff on 3/5/24 to review project updates and discuss property needs. (Mar)
Brooke Station Improvements	Design and construction of a platform extension up to 700 feet to accommodate full-length VRE trains.	Development	\$ 9,461,455.00	VRE has reengaged this project and returned it to the CIP budget for future years. Project schedule updates pending input from various stakeholders. (Apr)
Crossroads MSF Employee Parking	Design and construction of a permanent employee parking lot at VRE Crossroads Yard.	Final Design	\$ 7,365,765.00	Resubmission of special use permit package is imminent as review comments have been addressed. (Apr) Met with county technical review committee on 2/22/24 for special use permit application. Addressing comments and will resubmit. (Mar)
Crystal City Station Improvements	Improved station access and service reliability will result from a new station. The platform at the relocated station will allow for the simultaneous boarding of two full-length trains. The station's design will accommodate a future pedestrian/bicycle connection between the station and the airport.	Development	\$ 68,900,900.00	Revised 60% design shared with CSXT, VPRA and Amtrak for review on 3/25/24. Design advancing to 90% while review is performed. (Apr) Revised 60% design incorporating south entrance stairwell and mezzanine to be delivered 3/19/24. (Mar)

- continued next page -

## CAPITAL PROJECTS UPDATE

Project Name	Project Description	Current Phase	Budget	Project Notes
Alexandria Station Improvements	Passenger safety will be improved by replacing an at-grade pedestrian track crossing with elevators to connect the two platforms. The elevators and the current and proposed stairs, will connect to the existing tunnel between the two platforms. Adjustments to platform elevation will eliminate the need for step-boxes to access VRE and Amtrak trains. The center platform will be widened and lengthened to accommodate trains on both tracks.	Final Design	\$ 37,288,433.00	VRE is progressing with resolution of comments on 90% station design and unification with King and Commonwealth bridge designs. (Apr) VRE is working to resolve comments in coordination with Alexandria 4th Track and King and Commonwealth Bridge designs. (Mar)
Broad Run Expansion	To accommodate forecasted ridership growth and increase service reliability, improvements are needed at both the Maintenance and Storage Facility (MSF) and station. An enlarged MSF can store longer trains and additional equipment. That requires shifting the existing platform and adding a pedestrian tunnel between the platform and existing and proposed parking lots. A second, 600-space lot and third main track will be constructed.	Final Design	\$ 139,381,862.00	Updating exhibits and design elements based on prior discussions related to property acquisition. (Apr) Met with Prince William County Staff on 3/5/24 to review project updates and discuss property needs. (Mar)
Brooke Station Improvements	Design and construction of a platform extension up to 700 feet to accommodate full-length VRE trains.	Development	\$ 9,461,455.00	VRE has reengaged this project and returned it to the CIP budget for future years. Project schedule updates pending input from various stakeholders. (Apr)
Crossroads MSF Employee Parking	Design and construction of a permanent employee parking lot at VRE Crossroads Yard.	Final Design	\$ 7,365,765.00	Resubmission of special use permit package is imminent as review comments have been addressed. (Apr) Met with county technical review committee on 2/22/24 for special use permit application. Addressing comments and will resubmit. (Mar)
Crystal City Station Improvements	Improved station access and service reliability will result from a new station. The platform at the relocated station will allow for the simultaneous boarding of two full-length trains. The station's design will accommodate a future pedestrian/bicycle connection between the station and the airport.	Development	\$ 68,900,900.00	Revised 60% design shared with CSXT, VPRA and Amtrak for review on 3/25/24. Design advancing to 90% while review is performed. (Apr) Revised 60% design incorporating south entrance stairwell and mezzanine to be delivered 3/19/24. (Mar)

- continued next page -

## CAPITAL PROJECTS UPDATE

Project Name	Project Description	Current Phase	Budget	Project Notes
Alexandria Station Improvements	Passenger safety will be improved by replacing an at-grade pedestrian track crossing with elevators to connect the two platforms. The elevators and the current and proposed stairs, will connect to the existing tunnel between the two platforms. Adjustments to platform elevation will eliminate the need for step-boxes to access VRE and Amtrak trains. The center platform will be widened and lengthened to accommodate trains on both tracks.	Final Design	\$ 37,288,433.00	VRE is progressing with resolution of comments on 90% station design and unification with King and Commonwealth bridge designs. (Apr) VRE is working to resolve comments in coordination with Alexandria 4th Track and King and Commonwealth Bridge designs. (Mar)
Broad Run Expansion	To accommodate forecasted ridership growth and increase service reliability, improvements are needed at both the Maintenance and Storage Facility (MSF) and station. An enlarged MSF can store longer trains and additional equipment. That requires shifting the existing platform and adding a pedestrian tunnel between the platform and existing and proposed parking lots. A second, 600-space lot and third main track will be constructed.	Final Design	\$ 139,381,862.00	Updating exhibits and design elements based on prior discussions related to property acquisition. (Apr) Met with Prince William County Staff on 3/5/24 to review project updates and discuss property needs. (Mar)
Brooke Station Improvements	Design and construction of a platform extension up to 700 feet to accommodate full-length VRE trains.	Development	\$ 9,461,455.00	VRE has reengaged this project and returned it to the CIP budget for future years. Project schedule updates pending input from various stakeholders. (Apr)
Crossroads MSF Employee Parking	Design and construction of a permanent employee parking lot at VRE Crossroads Yard.	Final Design	\$ 7,365,765.00	Resubmission of special use permit package is imminent as review comments have been addressed. (Apr) Met with county technical review committee on 2/22/24 for special use permit application. Addressing comments and will resubmit. (Mar)
Crystal City Station Improvements	Improved station access and service reliability will result from a new station. The platform at the relocated station will allow for the simultaneous boarding of two full-length trains. The station's design will accommodate a future pedestrian/bicycle connection between the station and the airport.	Development	\$ 68,900,900.00	Revised 60% design shared with CSXT, VPRRA and Amtrak for review on 3/25/24. Design advancing to 90% while review is performed. (Apr) Revised 60% design incorporating south entrance stairwell and mezzanine to be delivered 3/19/24. (Mar)

- continued next page -



*This page intentionally left blank*



## VIRGINIA RAILWAY EXPRESS

1500 KING STREET, SUITE 202 • ALEXANDRIA, VA 22314 • 703.684.1001

VRE.ORG

