

# CEO REPORT

MAY 2025



# MISSION

The Virginia Railway Express, a joint project of the Northern Virginia Transportation Commission and the Potomac Rappahannock Transportation Commission, will provide safe, cost-effective, accessible, reliable, convenient, and customer responsive commuter-oriented rail passenger service. VRE contributes to the economic vitality of its member jurisdictions as an integral part of a balanced, intermodal regional transportation system.





CEO REPORT | APRIL 2025

TABLE OF CONTENTS

PERFORMANCE AT A GLANCE..... 3

ON-TIME PERFORMANCE ..... 4

AVERAGE DAILY RIDERSHIP ..... 6

SUMMONSES ISSUED ..... 7

TRAIN UTILIZATION..... 8

PARKING UTILIZATION ..... 9

FACILITIES UPDATE.....10

UPCOMING PROCUREMENTS .....11

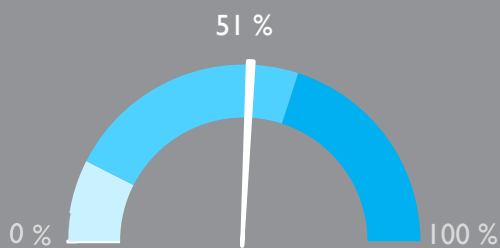
CAPITAL PROJECTS UPDATES.....12



VIRGINIA RAILWAY EXPRESS  
A better way. A better life.

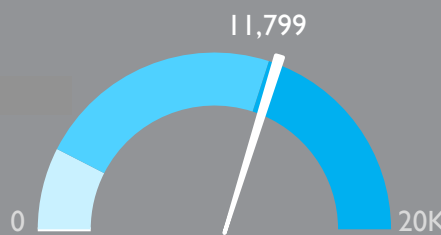


# PERFORMANCE AT A GLANCE



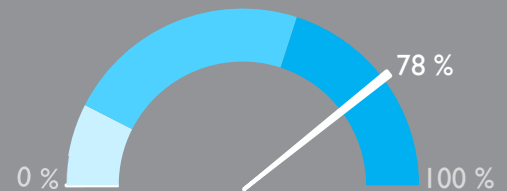
PARKING  
UTILIZATION

The total number of parking spaces used in the VRE system during the month, divided by the total number of parking spaces available.



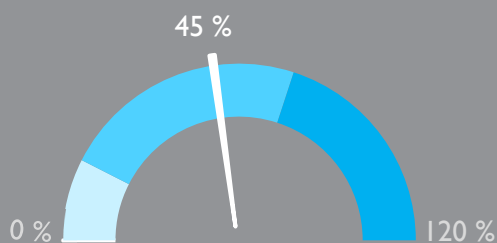
AVERAGE DAILY  
RIDERSHIP

The average number of boardings each operating day inclusive of Amtrak Step-Up boardings and reduced, "S" schedule, service.  
Same month, previous year: 6,961



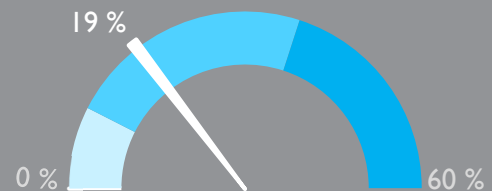
ON-TIME  
PERFORMANCE

Percent of trains arriving at their destination within 5 minutes of the schedule.  
Same month, previous year: 76%



SYSTEM CAPACITY

The percentage of peak hour train seats occupied. The calculation excludes reverse flow and non-peak hour trains.



OPERATING RATIO

*Through April 2025*

Year-to-date operating revenues divided by year-to-date operating expenses, which represents the share of operating costs paid by the riders.

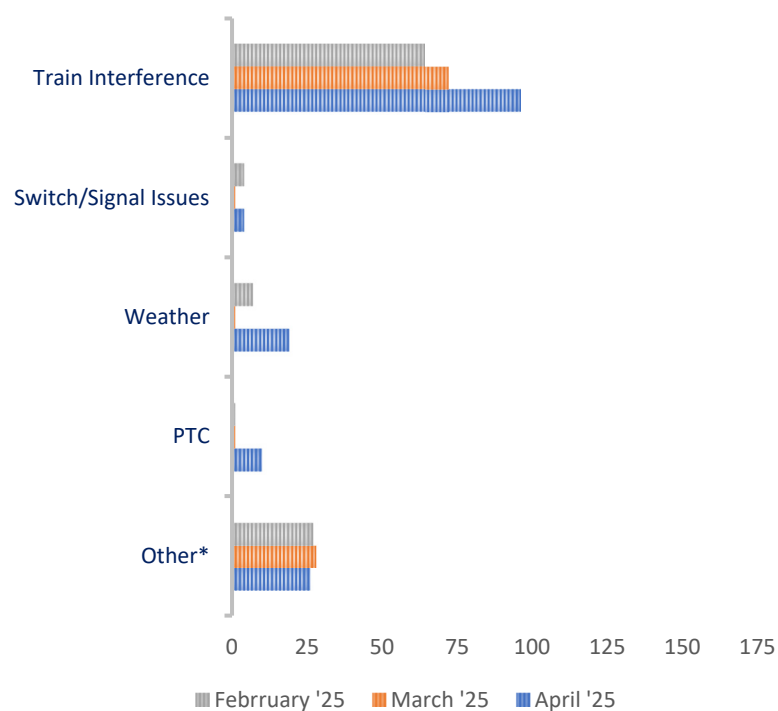
**APRIL 2025**

# ON-TIME PERFORMANCE

## OUR RECORD

	April 2025	March 2025	April 2024
Manassas Line	83%	85%	73%
Fredericksburg Line	72%	84%	78%
Systemwide	78%	85%	76%

## PRIMARY REASON FOR DELAY



VRE operated 702 trains in April. The on-time rate for the month was 78 percent.

One hundred fifty-five trains arrived more than 5 minutes late to their final destinations. Of those late trains, 58 were on the Manassas Line (37 percent), and 97 were on the Fredericksburg Line (63 percent). The average delay was 14 minutes. Seven trains were more than 30 minutes late to their destination station.

\*Includes trains that were delayed due to operational testing and passenger handling.

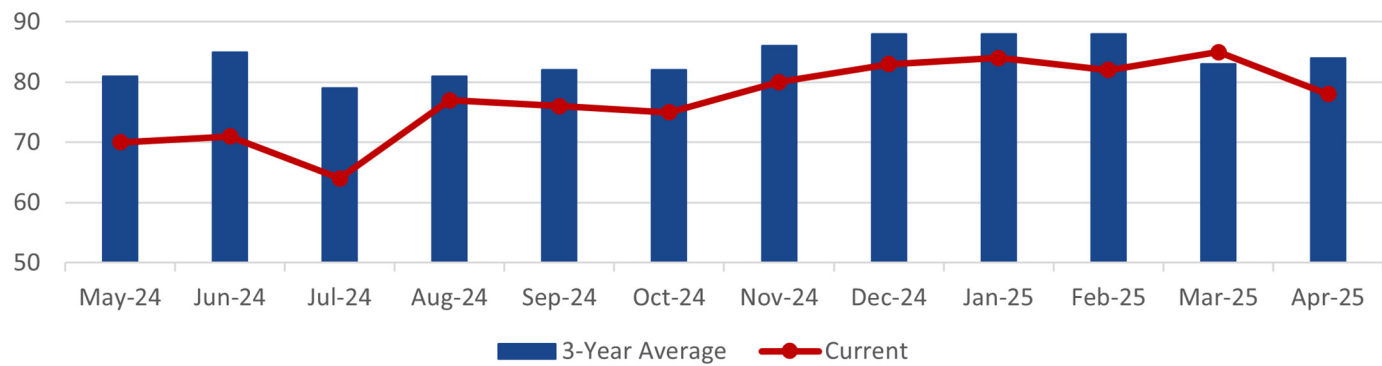
## LATE TRAINS

	System Wide			Fredericksburg Line			Manassas Line		
	Feb.	Mar.	Apr.	Feb.	Mar.	Apr.	Feb.	Mar.	Apr.
Total late trains	103	103	155	58	54	97	45	49	58
Average minutes late	17	13	13	16	15	13	20	12	13
Number over 30 minutes	12	6	6	7	5	3	5	1	3
Heat restrictions	0	0	5	0	0	5	0	0	0

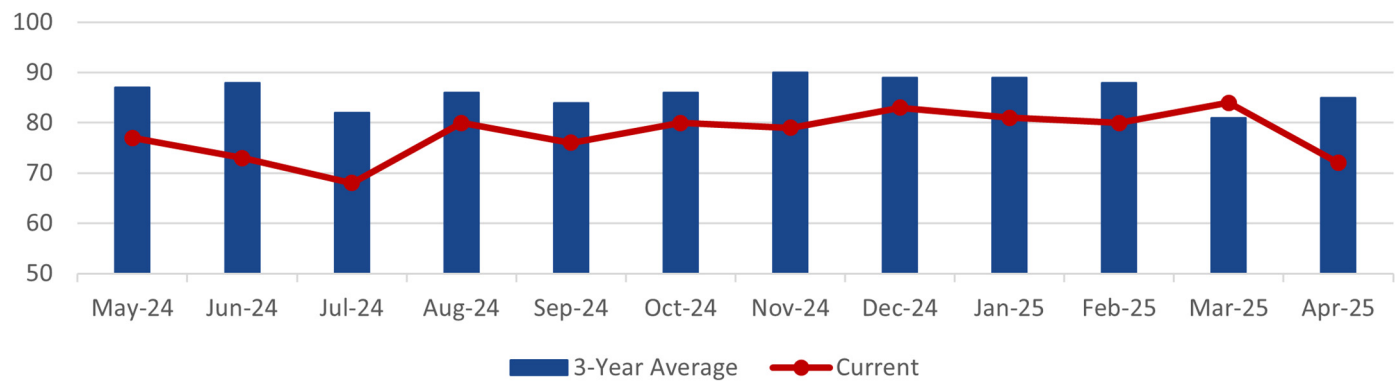


# ON-TIME PERFORMANCE

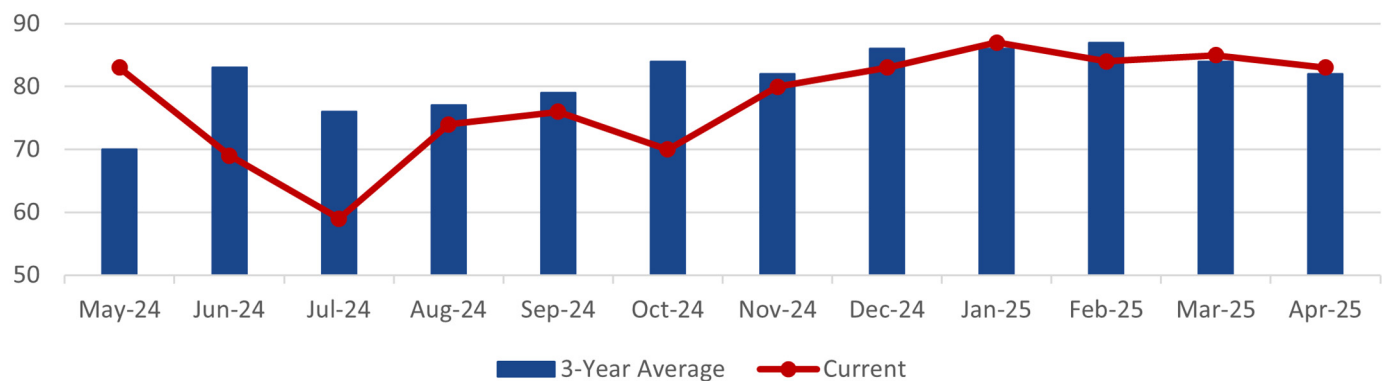
## VRE SYSTEM



## FREDERICKSBURG LINE

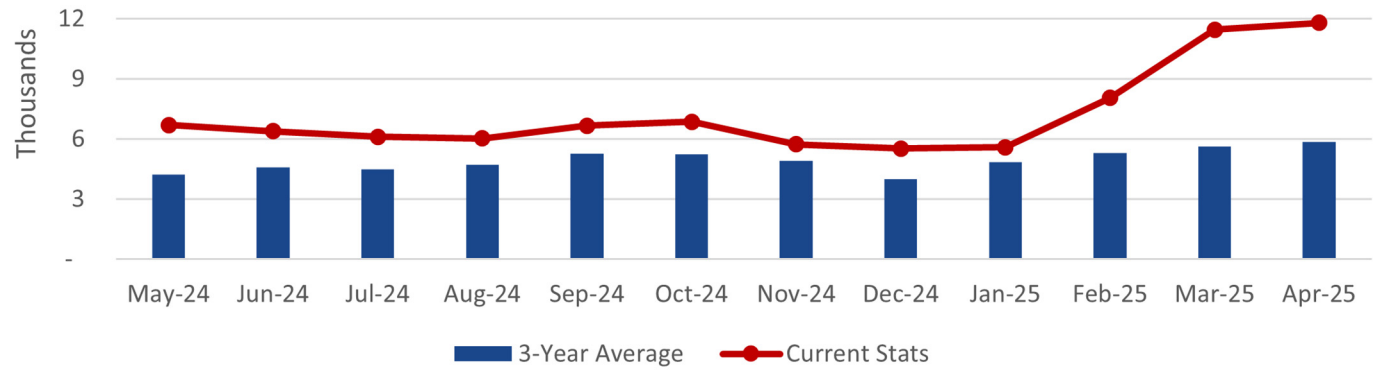


## MANASSAS LINE

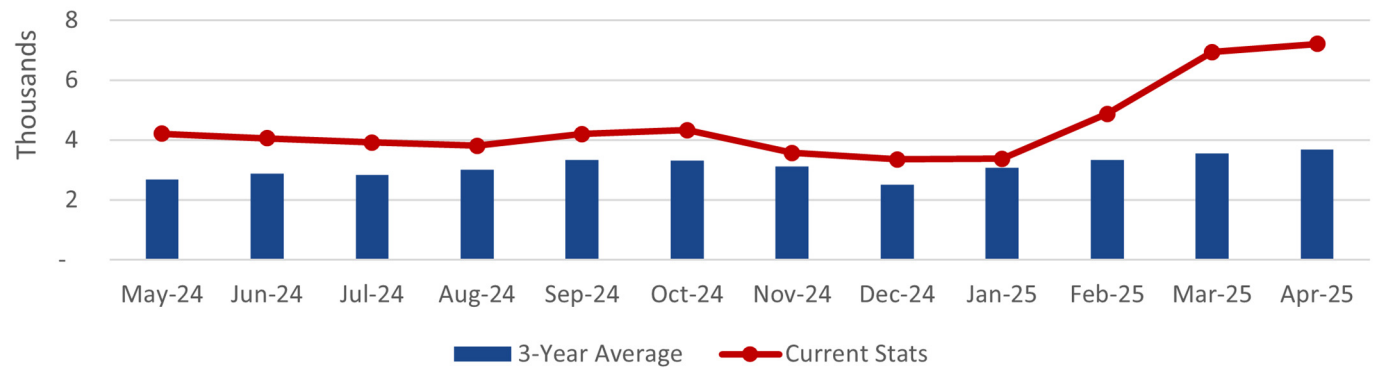


# AVERAGE DAILY RIDERSHIP

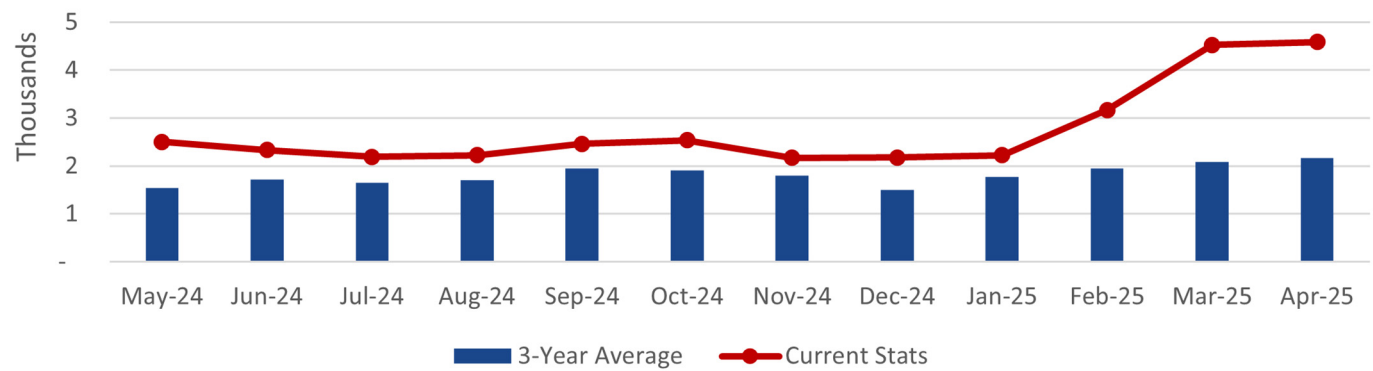
## VRE SYSTEM



## FREDERICKSBURG LINE



## MANASSAS LINE



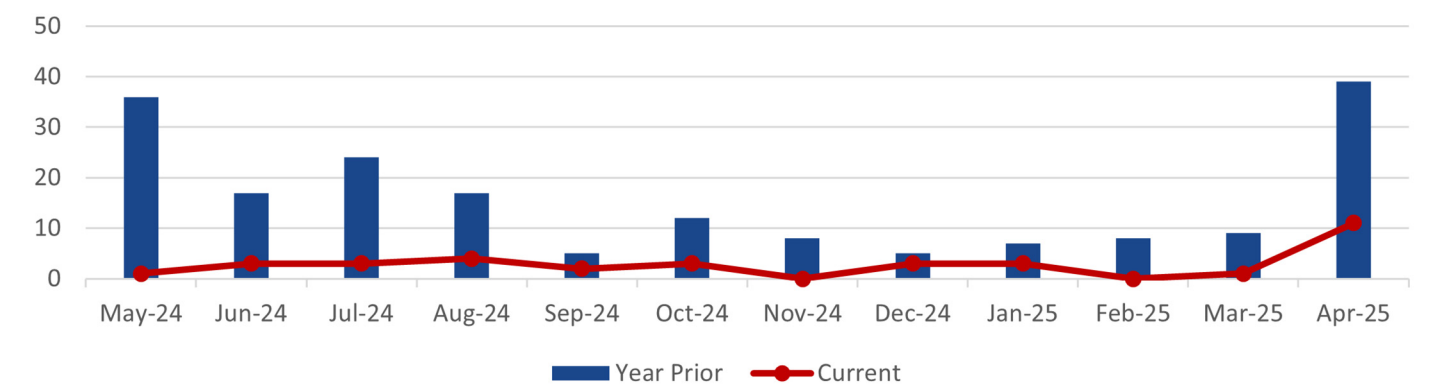
RIDERSHIP UPDATES

Average daily ridership for April was 11,799.  
There were 22 service days.

	April 2025	March 2025	April 2024
Monthly Ridership	259,585	240,794	153,139
Average Daily Ridership	11,799	11,466	6,961
Bicycles on Trains	1,974	1,837	1,290
Full Service Days	22	21	22
“S” Service Days	0	0	0

SUMMONSES ISSUED

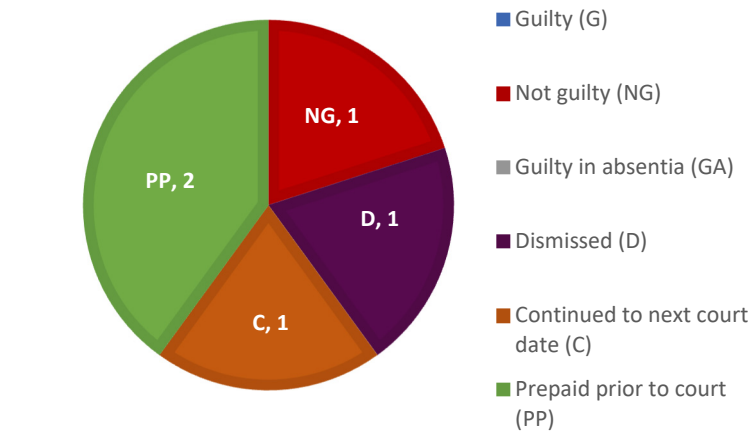
VRE SYSTEM



SUMMONSES WAIVED  
OUTSIDE OF COURT

Reason for Dismissal	Occurrences
Passenger showed proof of a monthly ticket	0
One-time courtesy	0
Per the request of the conductor	0
Defective ticket	0
Per ops manager	0
Unique circumstances	0
Insufficient information	0
Lost and found ticket	0
Other	0
Total Waived	0

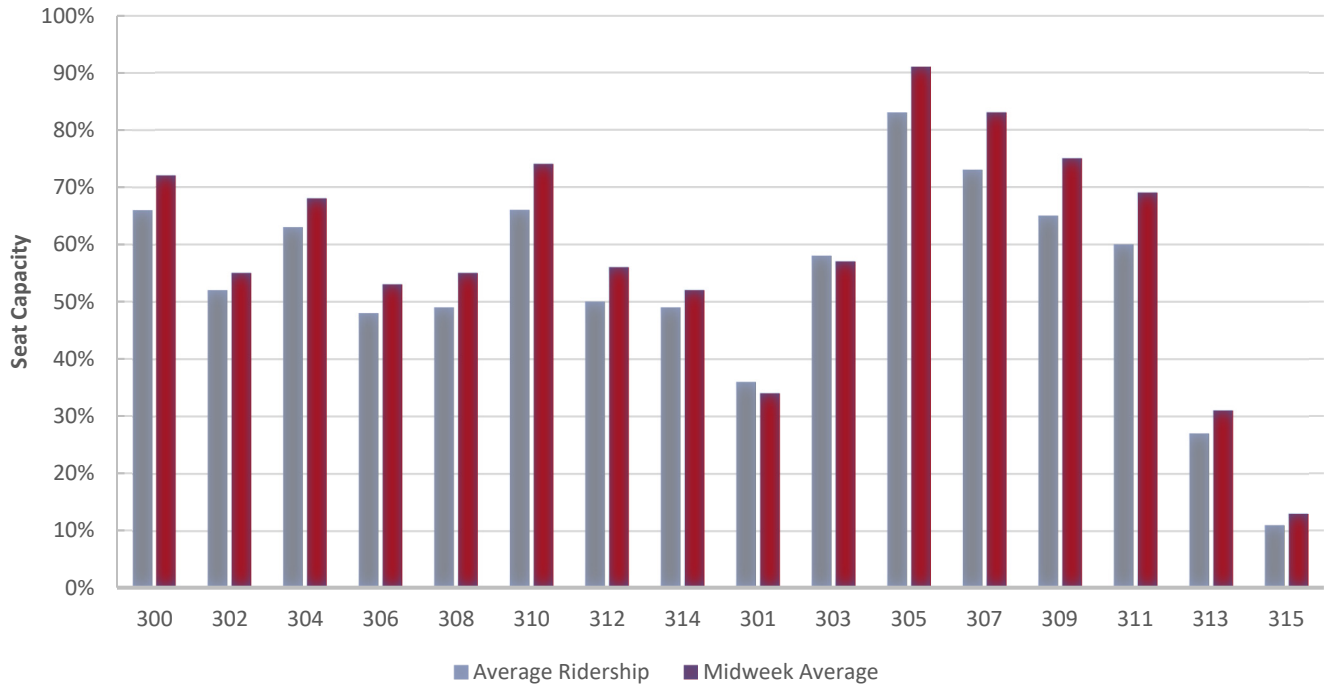
MONTHLY SUMMONSES  
COURT ACTION



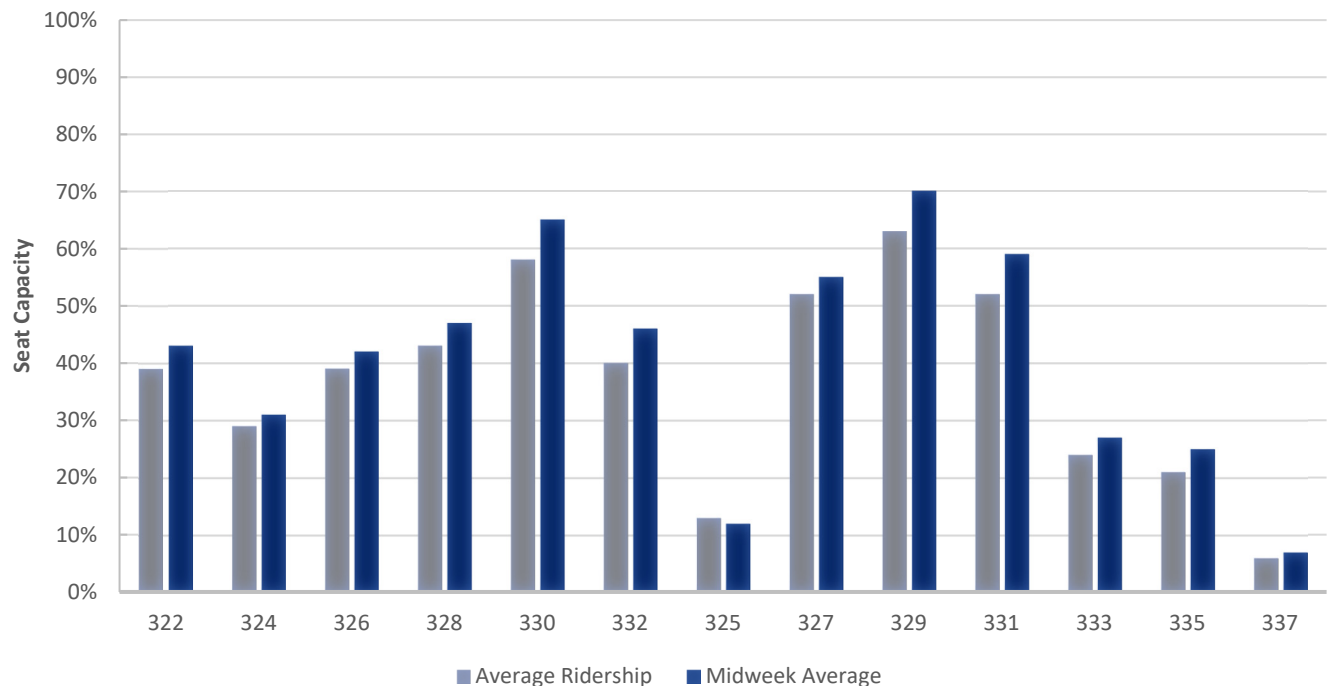


# TRAIN UTILIZATION

## FREDERICKSBURG LINE

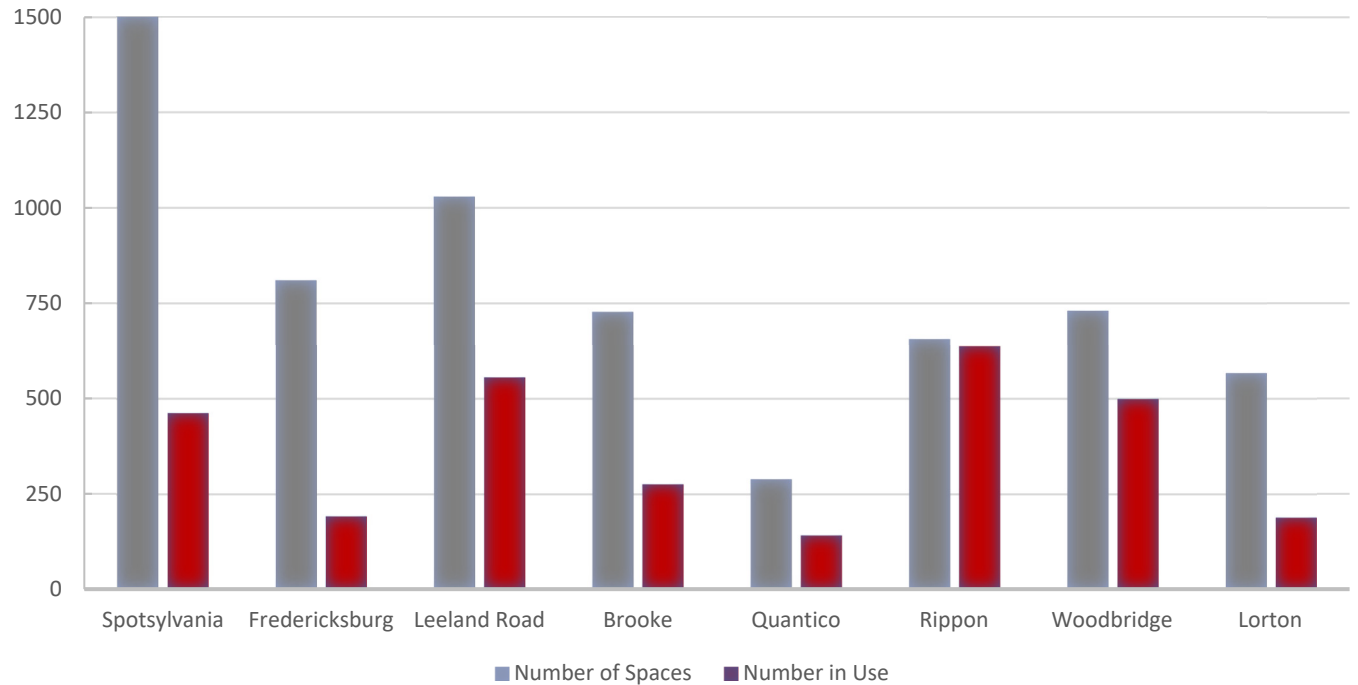


## MANASSAS LINE

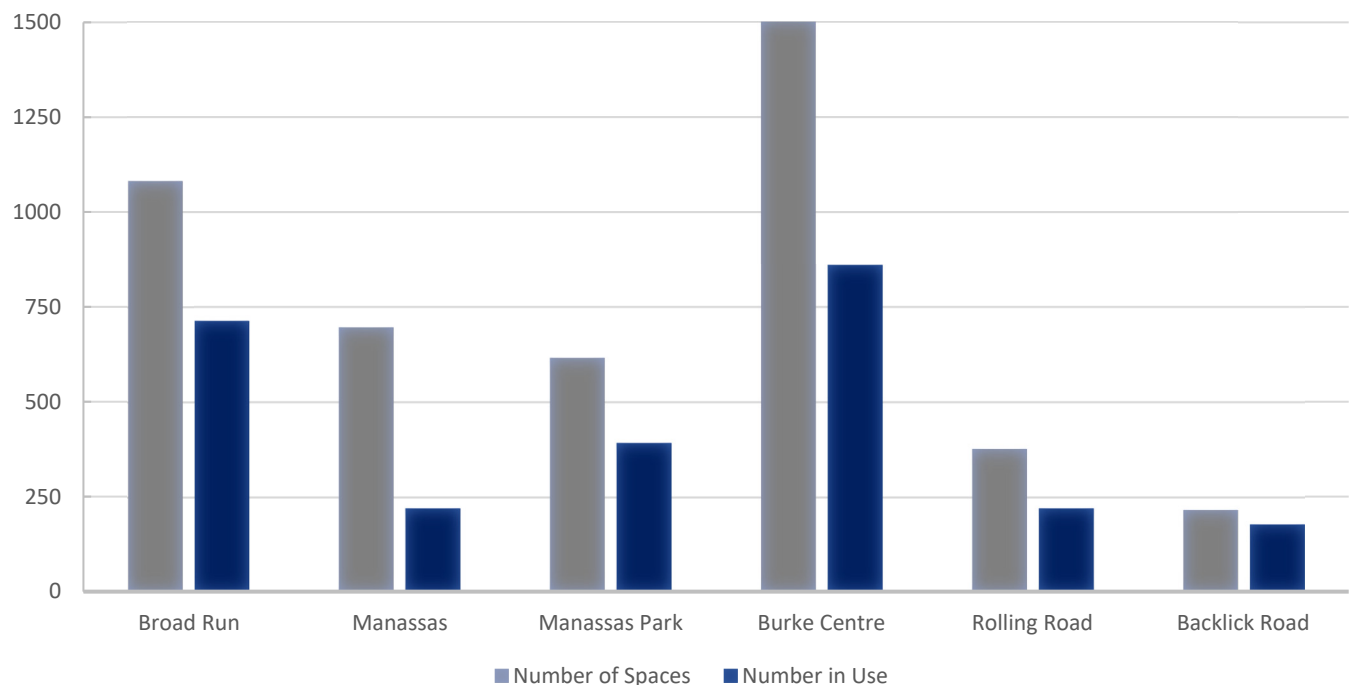


## PARKING UTILIZATION

### FREDERICKSBURG LINE



### MANASSAS LINE



# FACILITIES UPDATE

The following is a status update of VRE facilities projects.

## Completed projects:

1. Replacement of electric meter for upper parking lot lighting at Rippon station (by others)
2. Replacement of parking count system sensors at Rippon and Burke Centre stations

## Projects scheduled to be completed this quarter:

1. Minor structural repairs at Woodbridge station parking garage
2. Replacement of signage and restriping at Fredericksburg Parking Lot E
3. Repairs to train gate electrical conduits at Crossroads MASF
4. Maintenance of stormwater detention facility at Crossroads MASF
5. Installation of tamper-resistant fire department connection caps at Manassas station parking garage
6. Replacement of dry standpipe fire protection system at Manassas station parking garage
7. Replacement of security turnstile with security gate at Broad Run MASF
8. Replacement of timber pedestrian crossings at Rolling Road and Burke Centre stations
9. Replacement of parking lot entrance signage at Woodbridge, Brooke, Leeland Road and Manassas Park stations
10. Installation of prohibition signage at L'Enfant, Leeland Road, Spotsylvania and Manassas stations
11. Painting of steel railing repairs at Brooke, Leeland Road, Backlick Road and Burke Centre stations
12. Installation of parking count traffic loop system at Fredericksburg Parking Lot G and Manassas station parking garage.
13. Replacement of emergency generator and transfer switch at Alexandria Headquarters



*Scaffolding installed for Woodbridge station painting project*



*Drainage outfall rehabilitation at Crossroads MASF stormwater detention facility*

Projects scheduled to be initiated this quarter:

1. Replacement of LED lighting at Woodbridge station parking garage
2. Repairs to stairs at Franconia-Springfield and Woodbridge stations
3. Replacement of existing lighting with LED lighting at Manassas station parking garage
4. Installation of traffic loops for automated parking count system at Manassas station parking garage
5. Installation of security camera cabling in elevator shafts at Franconia-Springfield station and Manassas station parking garage
6. Repairs to platform lighting at multiple stations

Ongoing projects:

1. Modernization of east elevator at Woodbridge station parking garage
2. Painting of Woodbridge station and parking garage
3. Improvements to various elements of Manassas Park station

## UPCOMING PROCUREMENTS

1. Manassas Park station parking lot milling and paving
2. Locomotive AR-10 parts
3. Modernization of Woodbridge station east elevator
4. Construction of Alexandria station improvements and King Street and Commonwealth Avenue bridge replacement project
5. Upgrade of the camera communications and power infrastructure at Broad Run and Crossroads
6. Locomotive exterior painting services
7. Construction management services for the Crystal City station improvements project
8. Construction management services for the Broad Run expansion project
9. Photography and videography services
10. Construction manager-general contractor for the L'Enfant station and 4<sup>th</sup> track project
11. General planning and engineering consulting services



CAPITAL PROJECTS UPDATE (MAINTENANCE & STORAGE)

Project Name	Project Description	Current Phase	Budget	Monthly Project Notes
Broad Run Maintenance and Storage Facility (MSF) Expansion	Expansion of the MSF will support increased Manassas Line service. Enhancements will include new storage tracks for additional rolling stock and reconstruction of the station platform and crew buildings.	Final Design	\$ 100,209,793.00	Site permit applications to city and county submitted. VRE has cleared intake and paid initial fees for first formal review cycle. Building permit under review with county and city.
Crossroads Maintenance and Storage Facility (MSF) - Employee Parking	Permanent parking facility will replace gravel lot and support a future Administrative and Employee Welfare building.	Final Design	\$ 7,396,500.00	Design team has resubmitted phase I site permit package. Based on initial feedback of the easement plat and coordination with the county, VRE will resubmit as an easement exhibit, which is a streamlined process for plat approvals.
Crossroads Maintenance and Storage Facility (MSF) - Administrative and Employee Welfare (AEW) Building	New 7,532 square foot AEW building will consolidate functions now spread across two small spaces and include locker rooms, conference rooms, individual offices, and a kitchen.	Final Design	\$ 11,830,525.00	VRE has completed the review of the combined 75% pre-submission package for the AEW building and site plan modification for phase 2A. Consultant is addressing comments prior to application to Spotsylvania County in the coming weeks.
Seminary Yard Midday Storage Replacement Facility	New facility at former Norfolk Southern yard in Alexandria will replace VRE's current midday storage at Amtrak's Coach Yard in Washington, D.C. Amtrak requires more space in the Coach Yard to store its intercity trains. The new storage facility on the Manassas Line will provide increased flexibility for VRE.	Development	\$ 75,899,512.00	Design charette with the VRE team held in mid-April. The team will now advance the concept design with a focus on the initial rehabilitation phase.

CAPITAL PROJECTS UPDATE (PARKING)

Project Name	Project Description	Current Phase	Budget	Monthly Project Notes
Fredericksburg Station Parking Lot Improvements	VRE Lot G, now a gravel lot, will be paved; lighting will be enhanced; and access to the right of way will be maintained.	Final Design	\$ 2,593,773.00	Final design and permitting anticipated Q2 of 2025. IFB anticipated summer 2025. Construction anticipated Q3 of 2025.
Leeland Road Parking Improvements	Surface parking lot will be expanded by approximately 225 spaces to accommodate future demand.	Final Design	\$ 12,044,433.00	Cost estimate updated Nov. 2024. Updated funding plan under development.
Manassas Park Parking Expansion	New garage will nearly double the 600 spaces currently available in the existing surface lot. A pedestrian bridge will provide grade-separated access to the existing platform and lot. The VRE station and garage are an integral part of Manassas Park's proposed transit-accessible high-density mixed-use town center.	Construction	\$ 35,262,764.00	Bridge deck canopy frame installed and painted. Curb concrete placed. Masonry on platform tower complete and scaffolding being removed. Elevator install and stair erection to follow.

- continued next page -

CAPITAL PROJECTS UPDATE (ROLLING STOCK)

Project Name	Project Description	Current Phase	Budget	Monthly Project Notes
Fleet Expansion Coaches-21 Railcars	Eleven new coaches will expand capacity on the Fredericksburg Line while 10 coaches will facilitate near-term Manassas Line capacity expansion. The coaches will be manufactured by Alstom through a joint procurement with Chicago Metra.	Final Design	\$ 84,624,563.00	Alstom is submitting the final design drawing packages for review.

CAPITAL PROJECTS UPDATE (STATIONS)

Project Name	Project Description	Current Phase	Budget	Monthly Project Notes
Alexandria Station Improvements	ADA-compliant, grade-separated pedestrian tunnel and elevator will connect the two platforms, which will be extended to accommodate eight-car trains simultaneously on three tracks. Raised platforms will eliminate the need for step-boxes. Rail bridges over King St. and Commonwealth Ave. will be replaced to improve safety.	Final Design	\$ 129,141,205.00	100% plans distributed to CSXT and VPRA for review. Comments to be returned mid-May. Building permit resubmitted, with review to be completed mid-May. Necessary property interests being coordinated with the city.
Backlick Road Station Improvements	A 270-foot platform extension will accommodate eight-car trains. Other enhancements include a second ADA-compliant entrance, upgraded lighting and communication systems, and rehabilitation of the existing platform and canopy.	Development	\$ 8,645,103.00	GEC task order fee negotiations finalized. VRE working to submit the grant application and initiate the CMAQ flex process with FTA and DRPT.
Brooke Station Improvements	A platform extension will accommodate eight-car trains. The design will allow for potential infrastructure upgrades, such as a third mainline track.	Development	\$ 11,131,217.00	VRE is collaborating with Stafford County, FAMPO, GWRC and OIPI on funding reallocations.
Crystal City Station Improvements	An island platform at this expanded and relocated station will allow for the simultaneous boarding of two eight-car trains and accommodate VPRA's planned fourth track between AF and RO interlockings. This two-phased project is being coordinated with Arlington County's planned intermodal bridge from the station to Ronald Reagan Washington National Airport and VPRA's Long Bridge Project.	Development	\$ 68,900,900.00	Comment resolution process underway with CSXT, VPRA, Amtrak, JBGS, Arlington County and VPRA for phase I 90% plans. Phase 2 advancing to 60% design.
Franconia-Springfield Station Improvements	Both existing platforms will be extended to accommodate eight-car trains and the east platform will be widened. A pedestrian ramp and tunnel entrance to the east platform will provide access during VPRA's Franconia to Lorton Third Track project.	Final Design	\$ 32,516,000.00	Notice to proceed given to construction manager. Comment resolution of Franconia-to-Lorton 3rd Track 90% design completed. Consultant advancing package to final, addressing received comments and preparing for permit applications.
Leeland Road Station Improvements	A platform extension will accommodate eight-car trains. Other enhancements include a new canopy, ADA-compliant entrance, and shared-use path.	Development	\$ 12,468,610.00	A GEC task order for engineering design and environmental support is being drafted for review.

- continued next page -

CAPITAL PROJECTS UPDATE (STATIONS)

Project Name	Project Description	Current Phase	Budget	Monthly Project Notes
L'Enfant Station and Fourth Track	The expanded station will allow for the simultaneous boarding of two eight-car trains. An additional mainline track between the VA and LE interlockings will be coordinated with VPRA's Long Bridge Project.	Development	\$ 131,800,302.00	VRE is setting up DDOT as a vendor in MUNIS to process the design-phase review fee.
Manassas Station Improvements	An extended platform will accommodate eight-car trains and enhance pedestrian access to the station. The continuous platform will replace the at-grade crossing at Battle St., improving safety. A new 300-foot platform with a canopy will be constructed west of the station. The project will be coordinated with the Manassas Line crossover feasibility study to inform future bi-directional service to the platforms.	Development	\$ 10,634,512.00	VRE leadership will join an upcoming city council work session to provide project updates. The proposed project schematic will be presented at the May 19, 2025, council meeting to seek concurrence.
Woodbridge Station Improvements	Extended platforms will accommodate eight-car trains. The project will enhance pedestrian access and support the addition of a third and fourth mainline track as proposed by the commonwealth's Transforming Rail in Virginia program.	Development	\$ 3,281,261.00	CMAQ funding flex and FTA grant pending completion of NEPA checklist, which is under development.

For more information about VRE capital projects, visit <https://projects.vre.org/list>



## VIRGINIA RAILWAY EXPRESS

1500 KING STREET, SUITE 202 • ALEXANDRIA, VA 22314 • 703.684.1001

[VRE.ORG](http://VRE.ORG)

