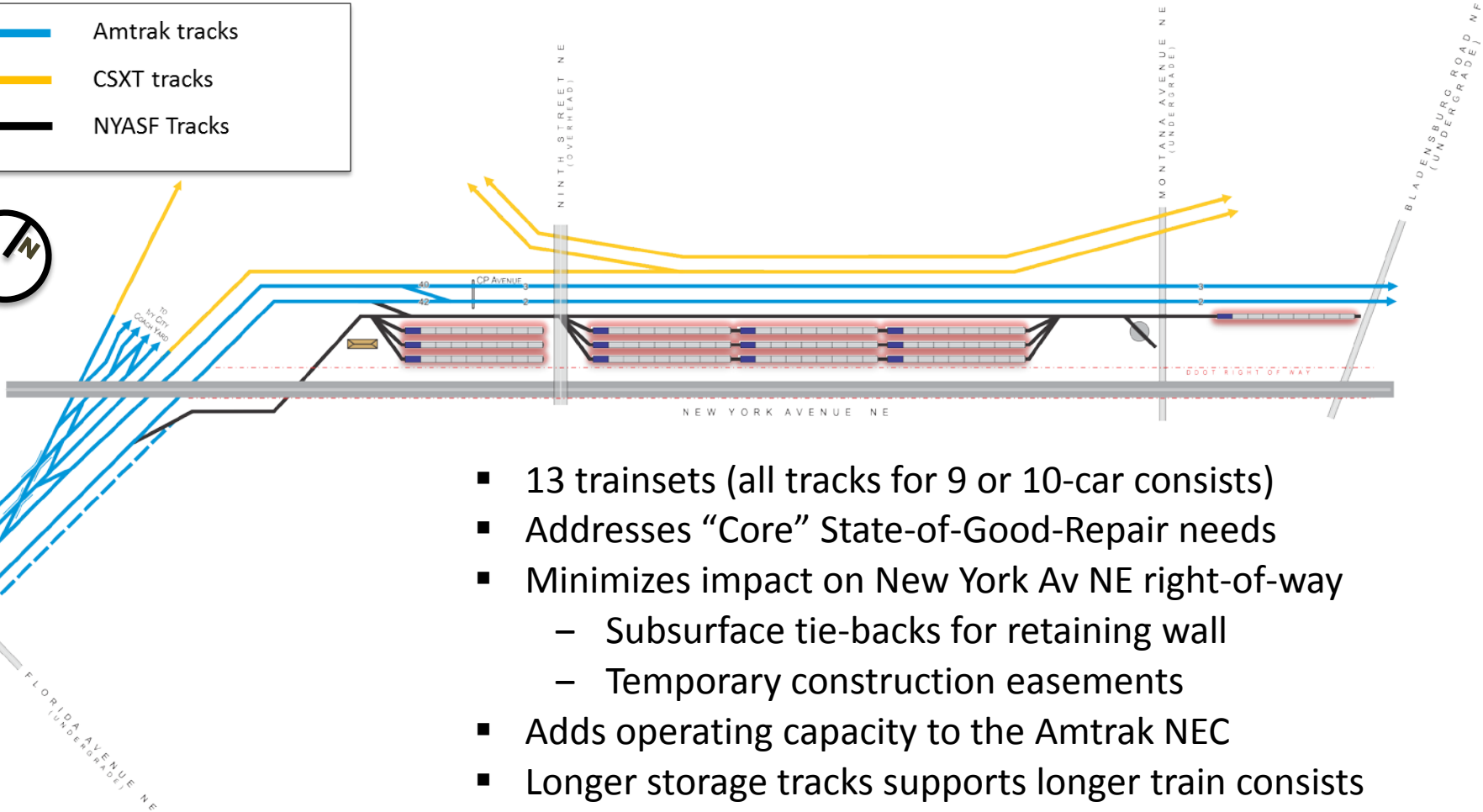
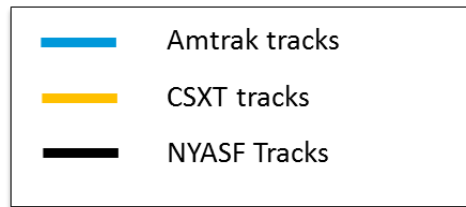


MIDDAY STORAGE PERMANENT REPLACEMENT NEW YORK AVENUE STORAGE FACILITY



- 13 trainsets (all tracks for 9 or 10-car consists)
- Addresses “Core” State-of-Good-Repair needs
- Minimizes impact on New York Av NE right-of-way
 - Subsurface tie-backs for retaining wall
 - Temporary construction easements
- Adds operating capacity to the Amtrak NEC
- Longer storage tracks supports longer train consists
 - Allows System Plan 2040 “Phase 1” growth



VIRGINIA RAILWAY EXPRESS

Not to Scale