



VRE Performance Measures

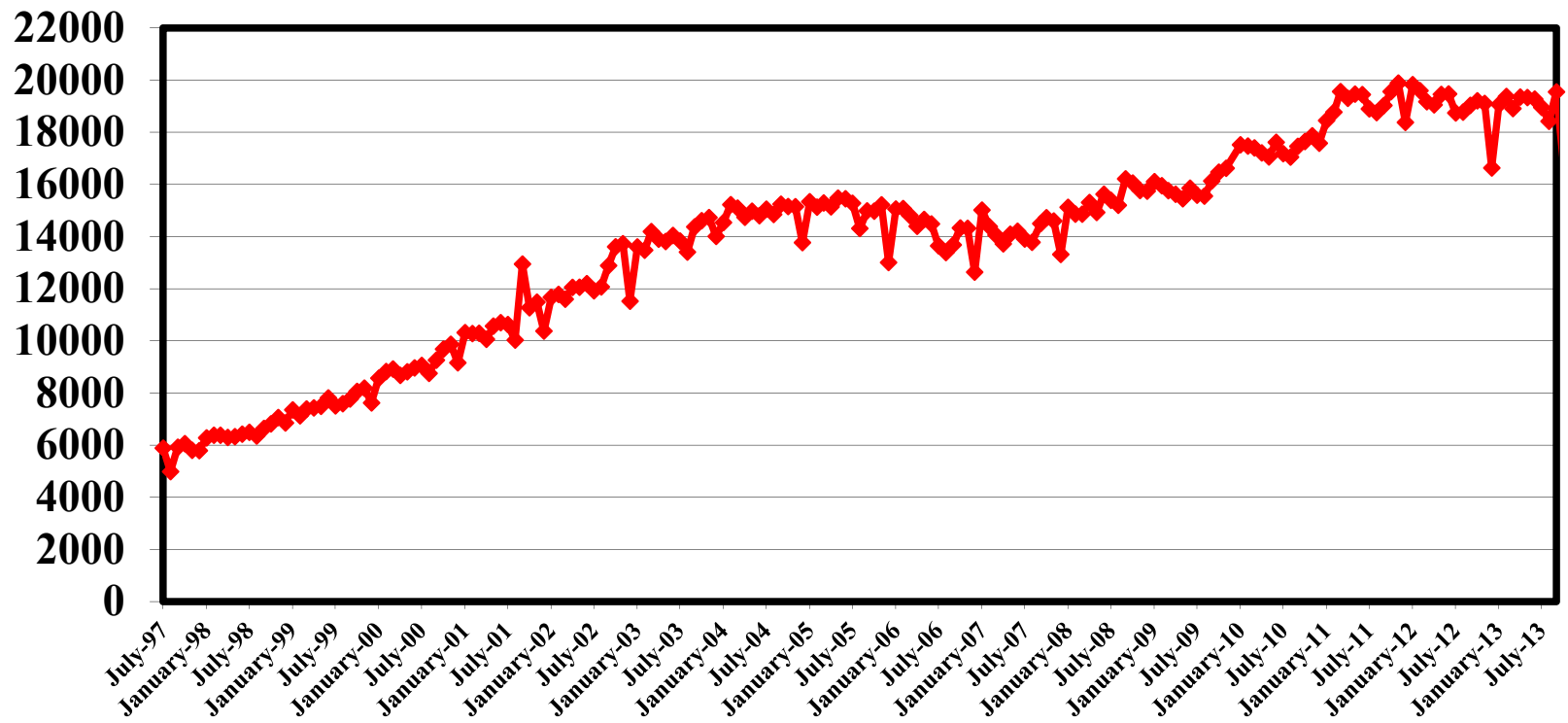
Last Updated June 15, 2015

With statistics through

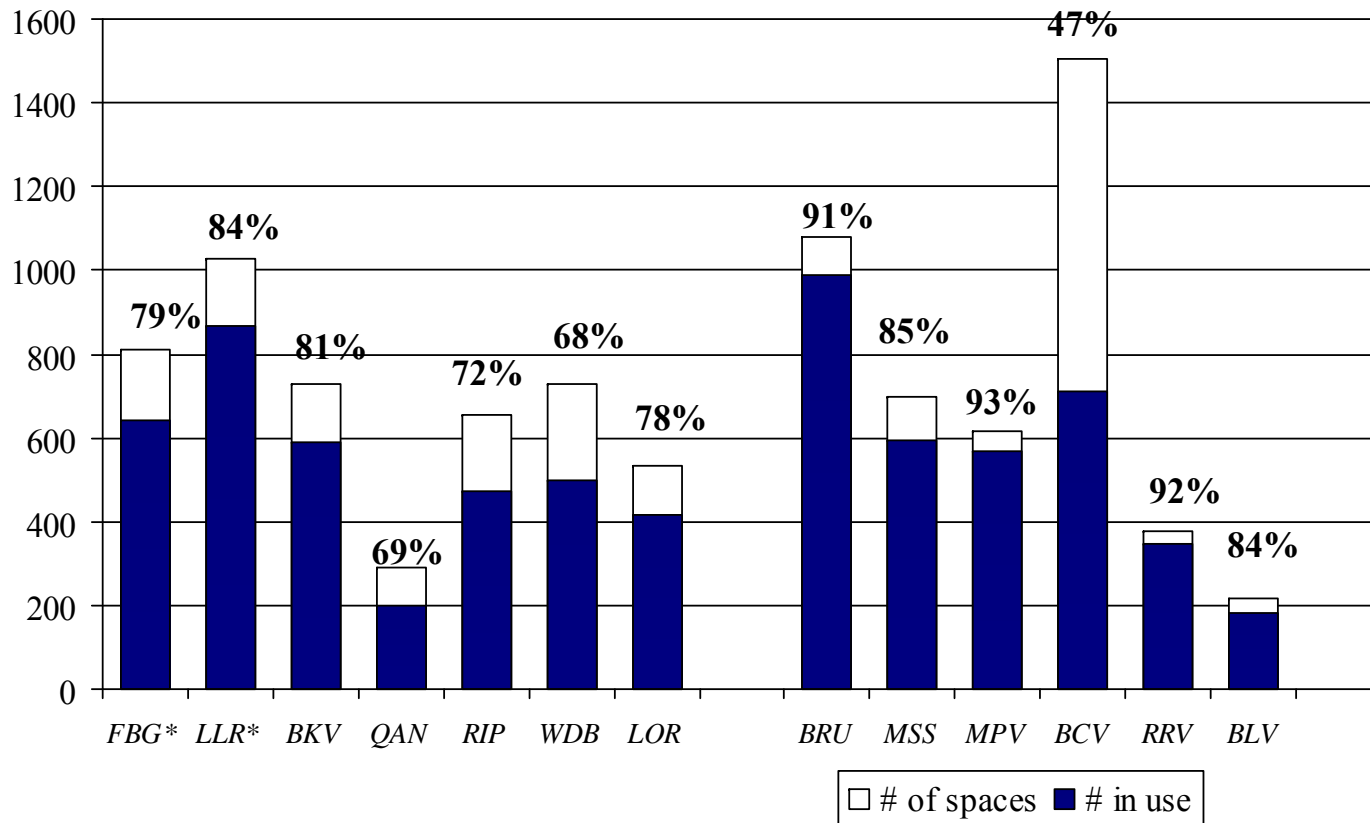
April 30, 2015

VRE Ridership

July 1997 – April 2015

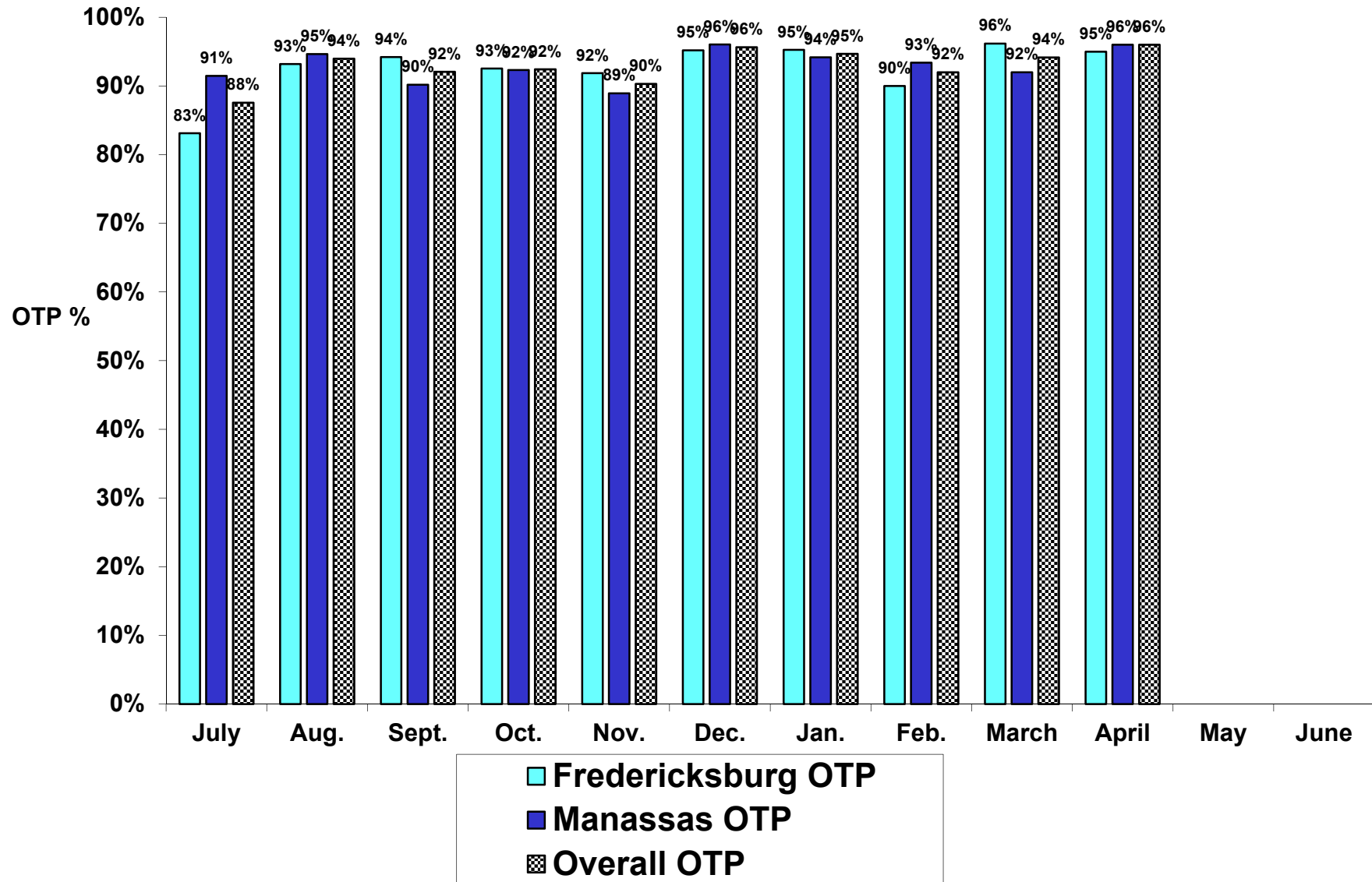


Parking Lot Utilization: April 2015



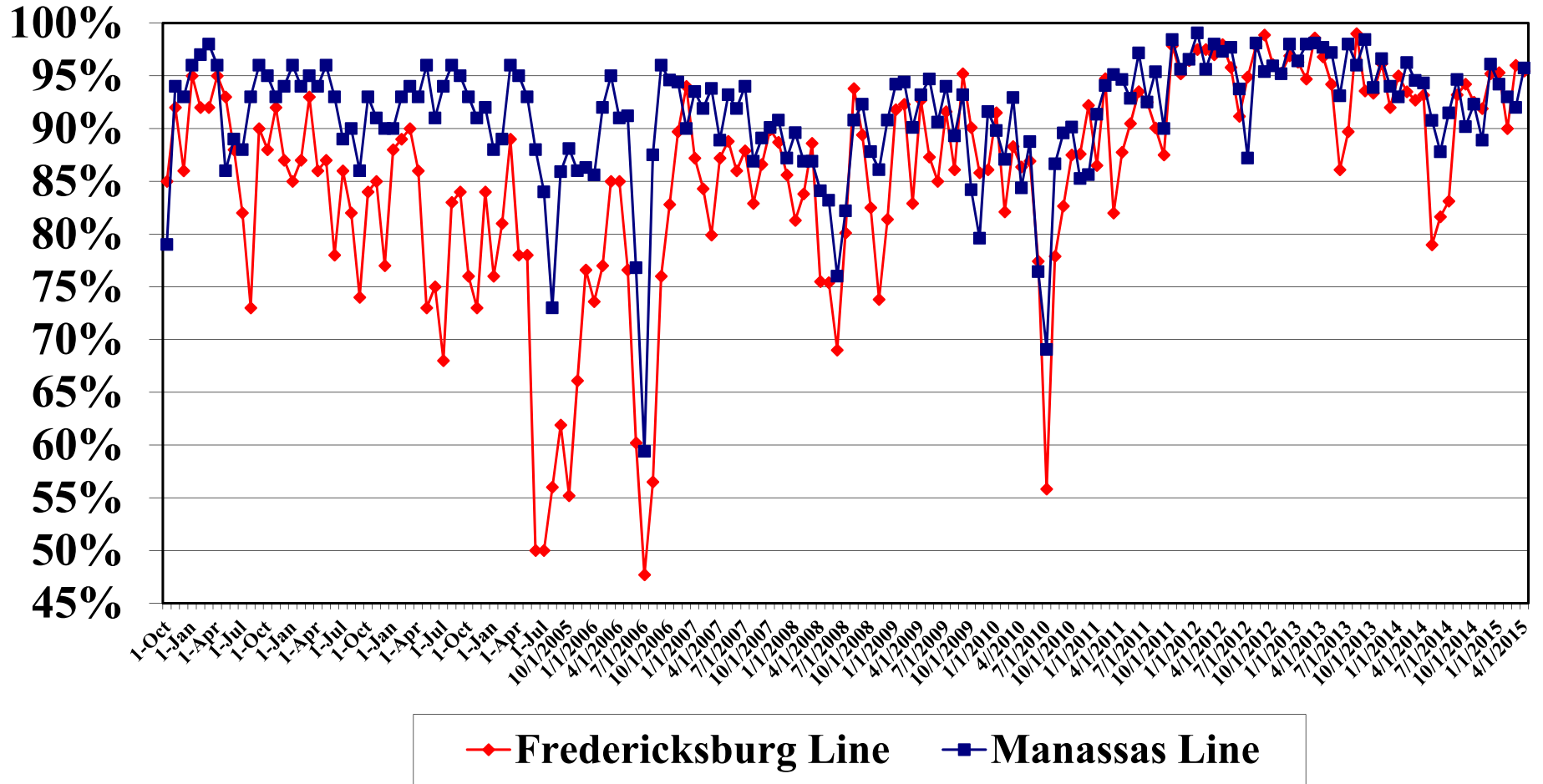
*Denotes stations with overflow parking available that is now being included in final counts.

Average On-Time Performance FY-2015



On-Time Performance

July 2001 – April 2015



Ridership Growth

Current Month	MANASSAS			FREDERICKSBURG			Current Total	% change
	Cumulative FY2014	Cumulative FY2015	% change	Cumulative FY2014	Cumulative FY2015	% change		
July	184,844	185,823	0.5%	209,231	223,472	6.8%	409,295	3.9%
August	385,679	359,078	-6.9%	424,875	443,578	4.4%	802,656	-1.0%
September	568,197	540,967	-4.8%	633,364	675,134	6.6%	1,216,101	1.2%
October	739,791	733,714	-0.8%	831,000	917,701	10.4%	1,651,415	5.1%
November	901,710	877,700	-2.7%	1,018,095	1,101,684	8.2%	1,979,384	3.1%
December	1,050,808	1,025,385	-2.4%	1,192,560	1,290,571	8.2%	2,315,956	3.2%
January	1,212,320	1,185,473	-2.2%	1,394,130	1,491,996	7.0%	2,677,469	2.7%
February	1,358,377	1,340,936	-1.3%	1,583,678	1,675,722	5.8%	3,016,658	2.5%
March	1,526,610	1,526,854	0.0%	1,782,382	1,893,804	6.3%	3,420,658	3.4%
April	1,716,821	1,724,973	0.5%	2,022,642	2,125,155	5.1%	3,850,128	3.0%
May	1,894,155			2,262,902			0	
June	2,076,146			2,495,213			0	

*Ridership figures are shown in passenger trips. Includes Amtrak cross honor train riders.

Manassas Line Capacity

Train #	# of seats	Daily Average	% use	Mid Week	% use	Peak %
322	795	421	53%	460	58%	5%
321	795	5	1%	5	1%	0%
332	795	736	93%	774	97%	5%
333	795	626	79%	699	88%	9%
324	831	624	75%	668	80%	5%
335	831	421	51%	469	56%	6%
326	1095	962	88%	1012	92%	5%
331	1095	1067	97%	1125	103%	5%
328	1086	833	77%	894	82%	6%
325	1086	189	17%	143	13%	-4%
336	1086	8	1%	7	1%	0%
329	1086	974	90%	1037	95%	6%
330	930	880	95%	928	100%	5%
327	930	975	105%	993	107%	2%
338	930	6	1%	6	1%	0%
337	930	215	23%	235	25%	2%

Fredericksburg Line Capacity

Train #	# of seats	Daily Average	% use	Mid Week	% use	Peak %
300	798	662	83%	709	89%	6%
305	798	903	113%	965	121%	8%
302	675	605	90%	652	97%	7%
313	675	254	38%	289	43%	5%
304	942	699	74%	728	77%	3%
309	942	785	83%	860	91%	8%
306	1059	862	81%	901	85%	4%
303	1059	1275	120%	1299	123%	2%
308	954	846	89%	881	92%	4%
307	954	971	102%	1047	110%	8%
310	723	682	94%	696	96%	2%
311	723	475	66%	517	72%	6%
312	531	478	90%	492	93%	3%
301	531	251	47%	213	40%	-7%